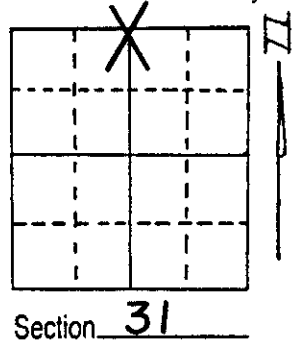


U.S. PUBLIC LAND SURVEY MONUMENT RECORD

Note: This form is intended and designed to fulfill all requirements of Wisconsin Administrative Code, Chapter A-E 5.02, U.S. Public Land Survey Monument Record (3) (a) (b) (c) (d) (e) (f) (g) (h) (i). An additional sheet may be added if necessary to conform with said requirements.

(a) Corner location: Township 37 North
 Range 7 East/West
 Town/City/Village CASSIAN
 County ONEIDA



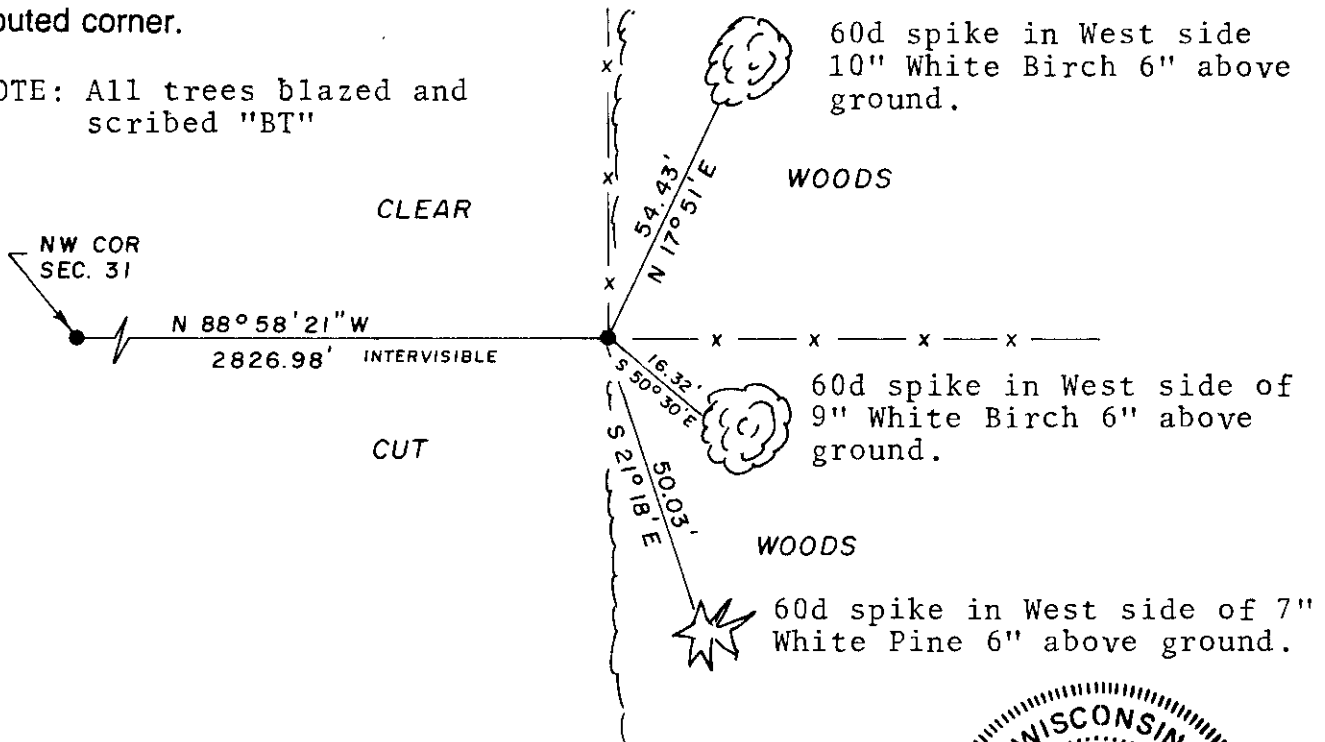
(b) (f) (g) (h) Description of monument found at this corner and if it was accepted, state all evidence (material, testimonial, occupational, plats, records, other monuments) used as a basis for accepting. If not accepted or if nothing was found, state evidence used as basis for establishing location. If reestablished through lost corner proportionate methods, indicate all monuments, distances and directions used to establish.

October 22, 1985. On this date, I recovered intact a 2" iron pipe in old fence corner. Origin of pipe unknown. Accepted corner as correct after traverse of Section 31 and portion of Section 30 indicated pipe location is in harmony with old fence lines and occupation lines.

See reverse side for section bearings and distances.

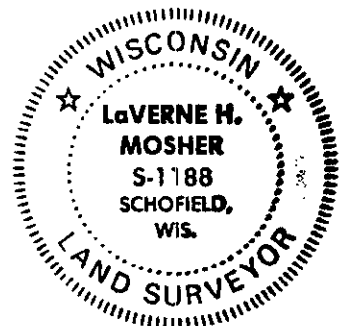
(c) (d) (e) Plan view of corner with ties to at least 4 witness monuments. If in disagreement with previously established corner, show the distances between the two corners and also indicate the ties to the disputed corner.

NOTE: All trees blazed and scribed "BT"



(i) I, LaVerne H. Mosher,
 (type or print name) certify that the corner location on this record was determined by me or under my direction and control and that this U.S. Public Land Survey Monument Record is correct and complete to the best of my knowledge and belief.

LaVerne H. Mosher Signature October 30, 1985 Date

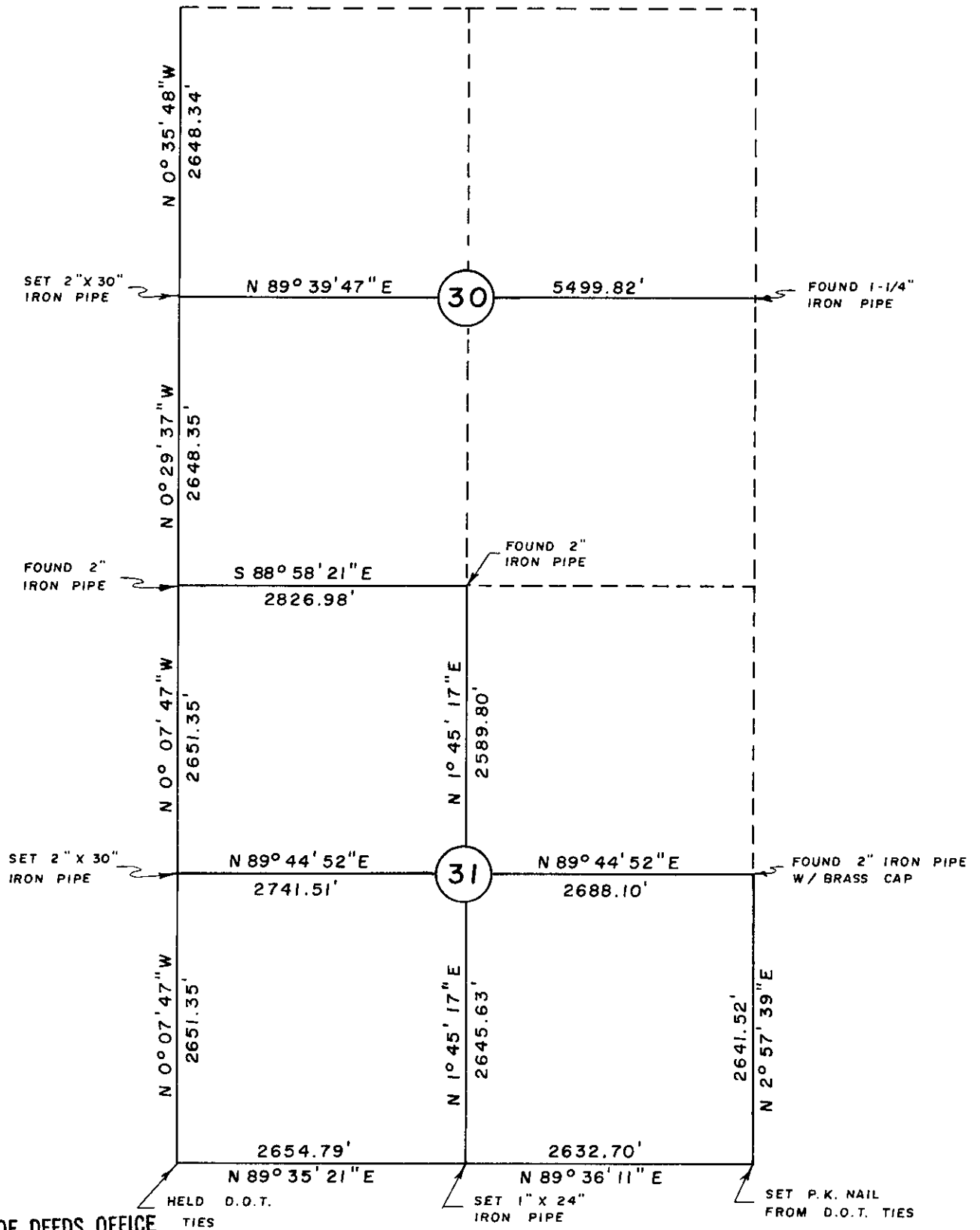


Index No. 1-3

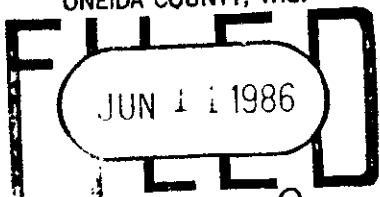
3707300020

T 37 N , R 7 E

FOUND WELL POINT
AND SCRIBED POST



REGISTER OF DEEDS OFFICE
ONEIDA COUNTY, WIS.



At... 10:00... o'clock... P..... M
DORIS VERAGE KUEHN
REGISTER OF DEEDS