

U.S. PUBLIC LAND SURVEY MONUMENT RECORD

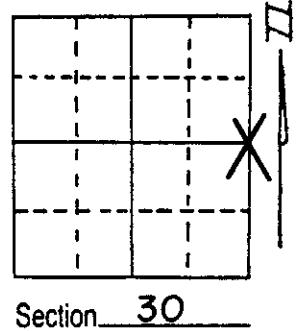
Note: This form is intended and designed to fulfill all requirements of Wisconsin Administrative Code, Chapter A-E 5.02, U.S. Public Land Survey Monument Record (3) (a) (b) (c) (d) (e) (f) (g) (h) (i). An additional sheet may be added if necessary to conform with said requirements.

(a) Corner location: Township 37 North

Range 7 East ~~West~~

Town/~~City/Village~~ CASSIAN

County ONEIDA



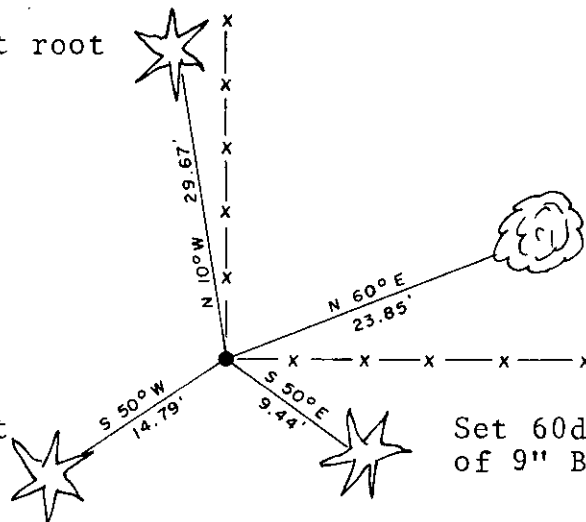
(b) (f) (g) (h) Description of monument found at this corner and if it was accepted, state all evidence (material, testimonial, occupational, plats, records, other monuments) used as a basis for accepting. If not accepted or if nothing was found, state evidence used as basis for establishing location. If reestablished through lost corner proportionate methods, indicate all monuments, distances and directions used to establish.

October 22, 1985. On this date I recovered intact a 1 1/4" iron pipe at old fence corner. Corner referenced on survey map (Misc. 2385) by Sy Poskie circa 1961. D.H. Vaughan calls for an iron pipe at this corner in survey notes dated June 21, 1904. Accepted corner as correct and set 60d spikes in existing scribed bearing trees which are in good condition.

See reverse side for section bearing and distance information.

(c) (d) (e) Plan view of corner with ties to at least 4 witness monuments. If in disagreement with previously established corner, show the distances between the two corners and also indicate the ties to the disputed corner.

Set 60d spike in West root of 13" White Pine.



Set 60d spike in South root of 8" White Birch.

Set 60d spike in East root of 8" Spruce.

Set 60d spike in West root of 9" Balsam.

NOTE: All trees blazed and scribed "BT".

(i) I, LaVerne H. Mosher,
 (type or print name) certify that the corner location on this record was determined by me or under my direction and control and that this U.S. Public Land Survey Monument Record is correct and complete to the best of my knowledge and belief.



Index No. 7-5

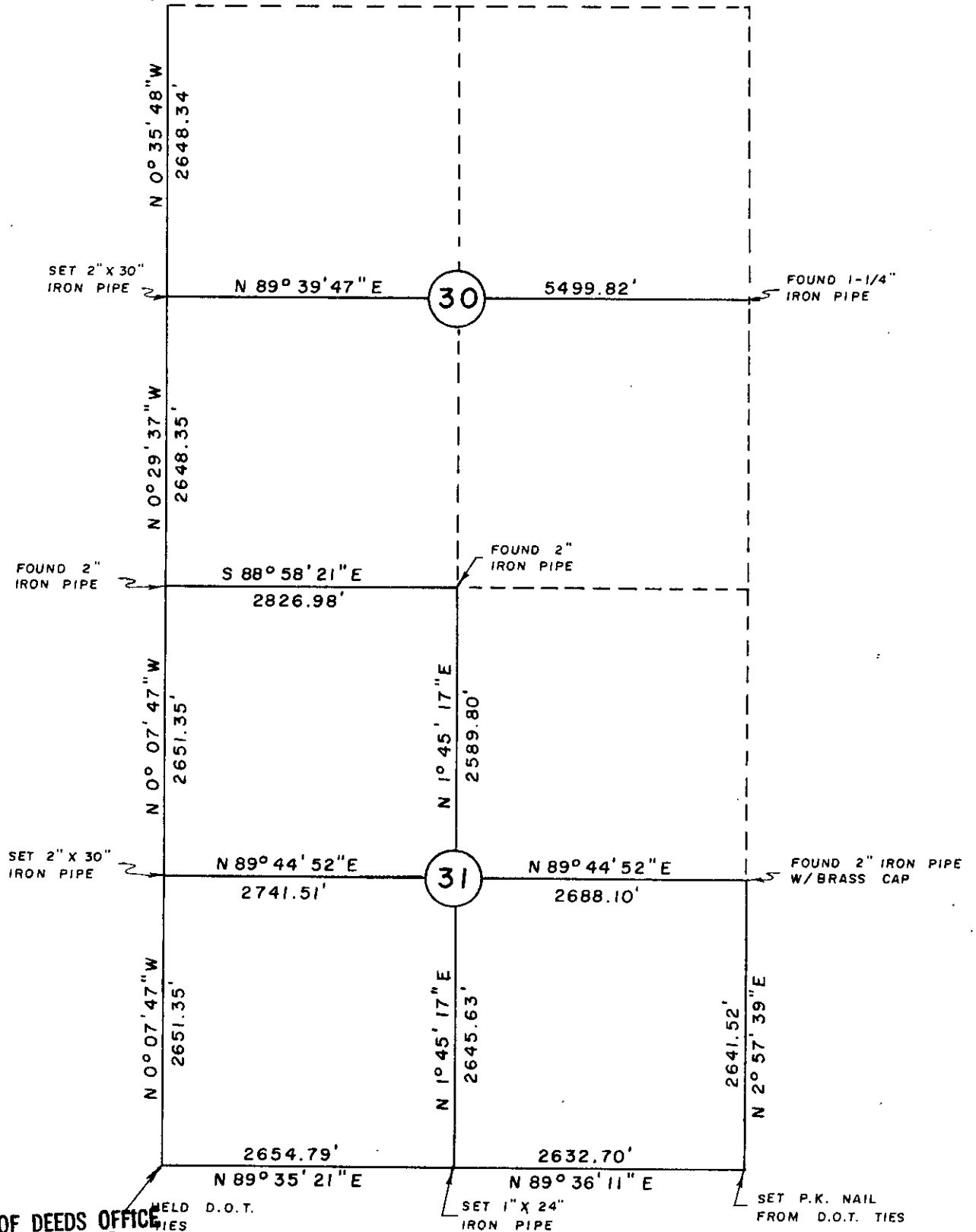
LaVerne H. Mosher
 Signature

October 30, 1985
 Date

3707302000

T 37 N , R 7 E

FOUND WELL POINT
AND SCRIBED POST



REGISTER OF DEEDS OFFICE
ONEIDA COUNTY, WIS.

FILED

JUN 11 1986

At 10:20 o'clock P.M.
DORIS VERAGE KUEHN
REGISTER OF DEEDS