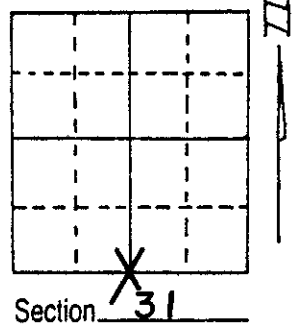


U.S. PUBLIC LAND SURVEY MONUMENT RECORD

Note: This form is intended and designed to fulfill all requirements of Wisconsin Administrative Code, Chapter A-E 5.02, U.S. Public Land Survey Monument Record (3) (a) (b) (c) (d) (e) (f) (g) (h) (i). An additional sheet may be added if necessary to conform with said requirements.

(a) Corner location: Township 37 North
 Range 7 East ~~West~~
 Town/City/Village CASSIAN
 County ONEIDA

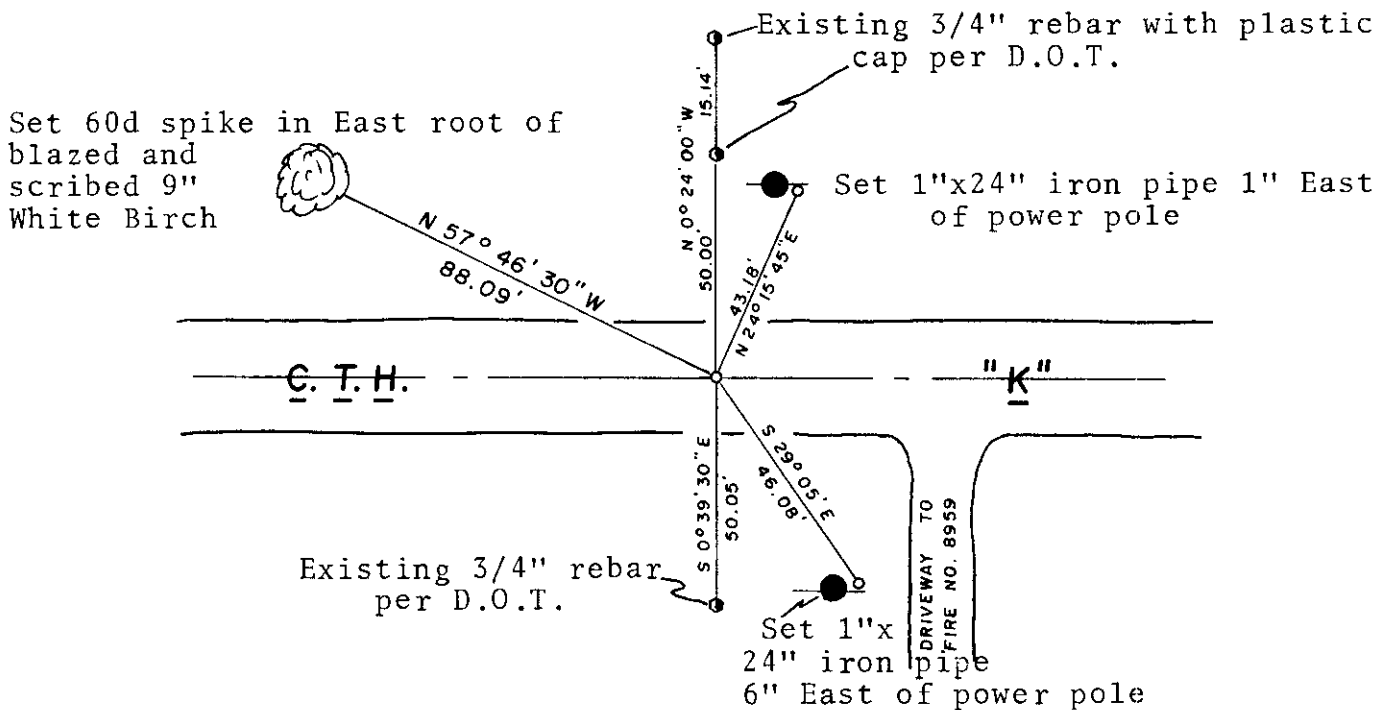


(b) (f) (g) (h) Description of monument found at this corner and if it was accepted, state all evidence (material, testimonial, occupational, plats, records, other monuments) used as a basis for accepting. If not accepted or if nothing was found, state evidence used as basis for establishing location. If reestablished through lost corner proportionate methods, indicate all monuments, distances and directions used to establish.

Recent reconstruction of County Highway "K" had destroyed the corner. Obtained copies of new Highway "K" R/W alignment and tie sheet which shows a RR spike at this corner, plus rebar offset monuments at R/W lines North and South. On October 22, 1985, I recovered intact all 3 rebars and established a temporary corner. Traversed Section 31 and discovered that temporary corner was very close to position obtained by proportionate measurement methods. Accepted temporary corner as true corner and set a 1"x24" iron pipe in centerline blacktop roadway surface.

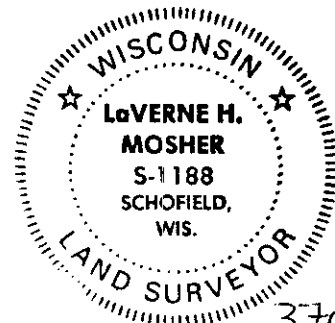
See reverse side for section bearing and distance information.

(c) (d) (e) Plan view of corner with ties to at least 4 witness monuments. If in disagreement with previously established corner, show the distances between the two corners and also indicate the ties to the disputed corner.



(i) I, LaVerne H. Mosher,
 (type or print name) certify that the corner location on this record was determined by me or under my direction and control and that this U.S. Public Land Survey Monument Record is correct and complete to the best of my knowledge and belief.

LaVerne H. Mosher October 30, 1985
 Signature Date

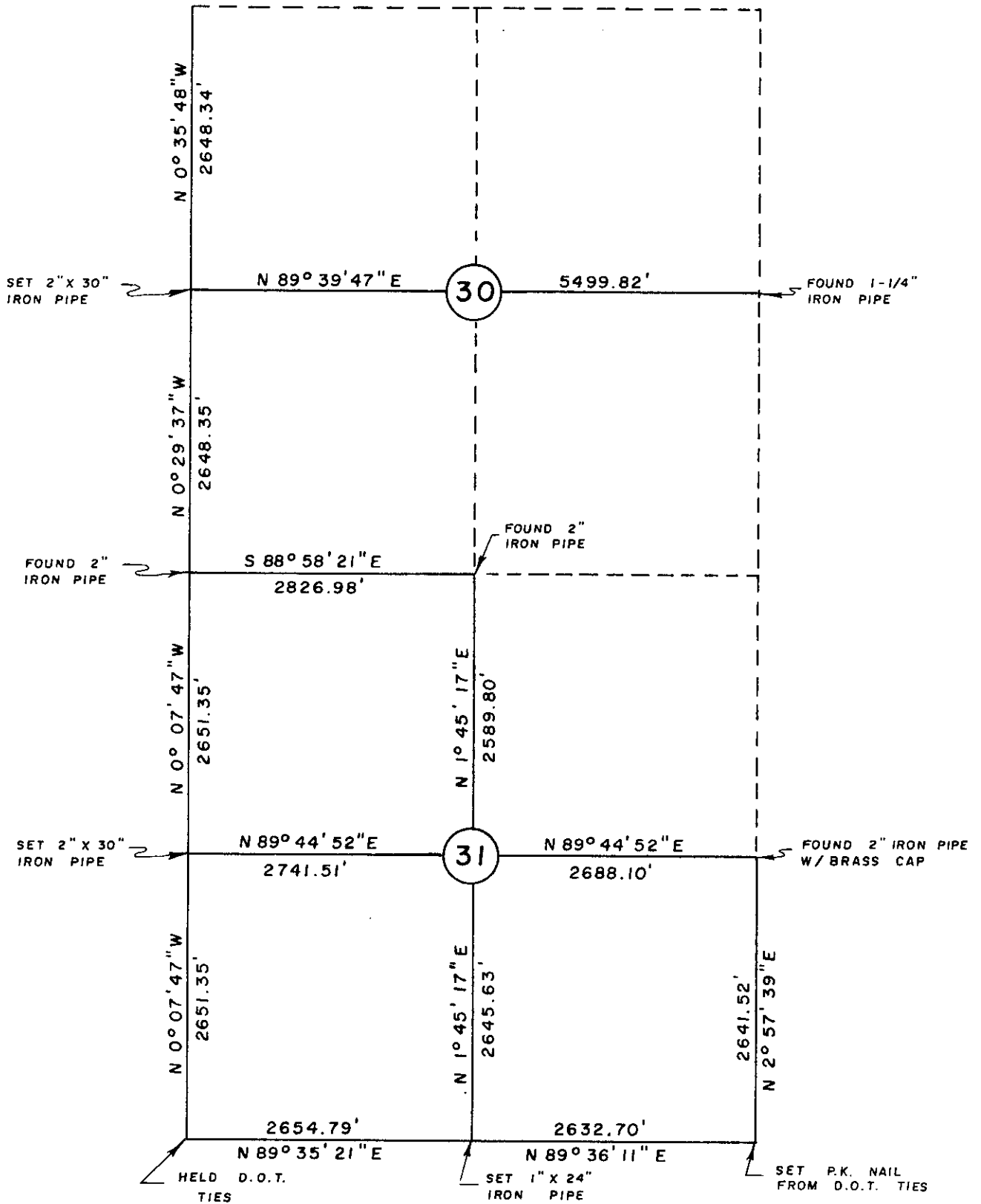


Index No. 2-3

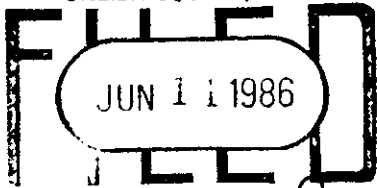
3707310020

T 37 N , R 7 E

FOUND WELL POINT
AND SCRIBED POST



REGISTER OF DEEDS OFFICE
ONEIDA COUNTY, WIS.



At 10:30 O'clock
DORIS VERABE KUEHN
REGISTER OF DEEDS