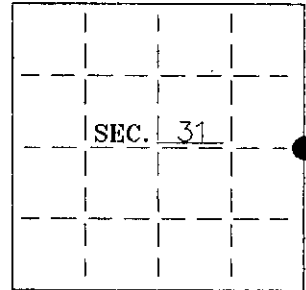


U. S. PUBLIC LAND SURVEY MONUMENT RECORD

Note: This form is intended and designed to fulfill all requirements of Wisconsin Administrative Code-Chapter A-E 7.08 U. S. Public Land Survey Monument Record (3)(a)(b)(c)(d)(e)(f)(g)(h)(i). An additional sheet may be added if necessary to conform with said requirements.

(a) CORNER LOCATION: Oneida County Coordinates
E 1/4 corner of Sec. 31 N 170014.9404
 Township 37 North E 202612.0122
 Range 7 East Datum Base --
 Town Cassian County of Oneida



(b) HISTORY OF ORIGINAL CORNER ESTABLISHMENT:

Original Surveyor: J. Jenkins
 Date of Survey: Commenced 1862
 Completed 1862

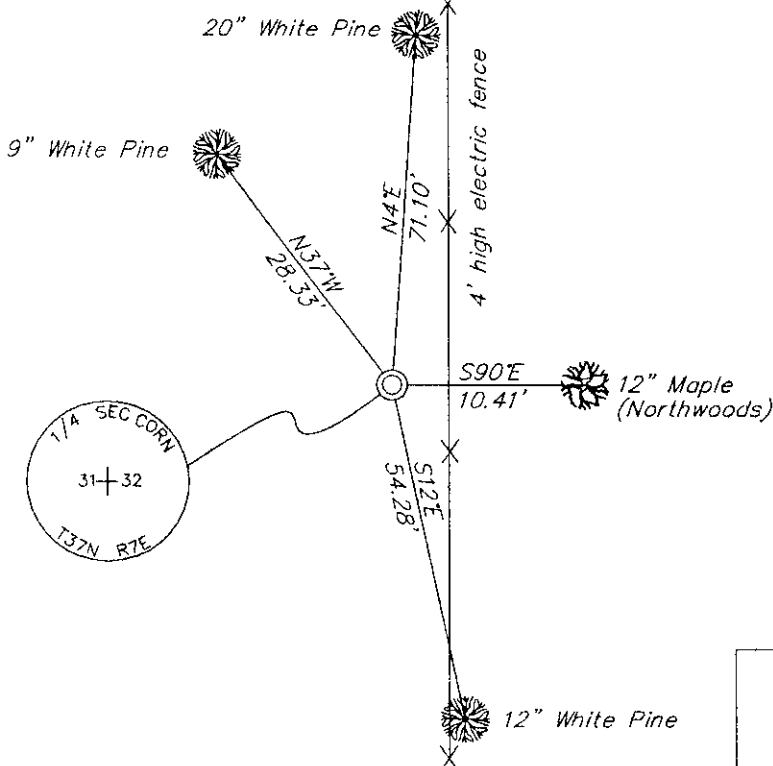
Original B.T.'S

16" White Pine N25°W, 24 lks
 6" Sugar S77°E, 18 lks

(b)(f)(g)(h) Description of monument found at this corner and if it was accepted-state all evidence (material-testimonial-occupation-plats-records-other monuments) used as a basis for accepting. If not accepted or if nothing was found state evidence used as basis for establishing location. If reestablished through lost corner proportionate methods indicate all monuments-distances and directions used to establish. Indicate type of monument and sign post found or set.

- 1971- On a map by Edward McNown he shows a Brass cap at the East 1/4 corner.
- 1972- Northwoods Surveyors notes state they found a 2" iron pipe capped/stamped and the remains of a 6x6 cedar post scribed. They made 2 new BT's: 8" twin Maple N80°E, 10.1' and 12" W. Birch S3°E, 28.6'.
- 1978- On a map by Wilderness Surveying they show a 2-1/2" Brass-capped iron pipe and they found Northwoods' BT's; now a 10" Maple East 10.4' and 14 Birch S2°E, 28.5'.
- 1995- On a map by Soder Surveying they show an Oneida County Brass-capped Monument found.
- 2001- I found and accepted a 2-1/2" Brass-capped iron pipe. I recovered Northwoods' maple BT in good condition but the Birch BT has been cut down. I made 3 new BT's as shown below.

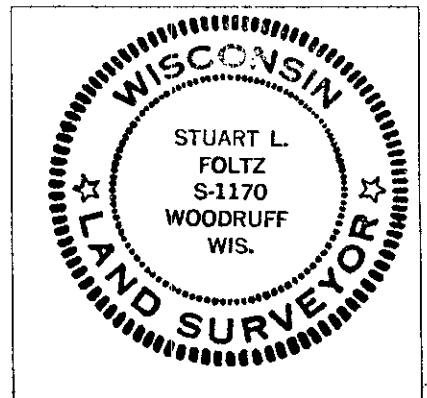
(c)(d)(e) Plan view of corner with ties to at least 4 witness monuments. If in disagreement with previously established corner-show the distances between the two corners and also indicate the ties to the disputed.



--set Carsonite post ±2' East.
 --set aluminum nails in each BT.

(i) I Stuart L. Foltz S-1170
 hereby certify that the corner location on this record was determined by me or under my direction and control and that this U.S. Public Land Survey Monument Record is correct and complete to the best of my knowledge and belief.

Stuart L. Foltz
 Signature Foltz and Associates, Inc. Date 1/23/03



INDEX NO. X 5

3707312000