

U.S. PUBLIC LAND SURVEY MONUMENT LOCATION RECORD

Recorders Data

CORNER: North 1/4 SECTION: 4 TOWNSHIP 36 NORTH RANGE 7 EAST/WEST

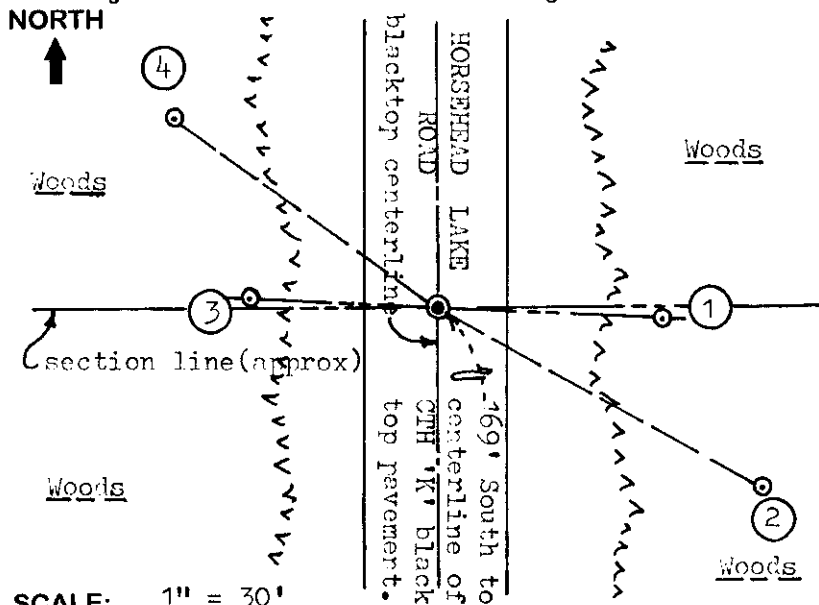
FOR M.C. CORNER INDICATE: NAME OF WATERWAY N/A SECTION LINE N/A

(CITY)(VILLAGE)(TOWN) OF: Woodboro COUNTY OF: Oneida

Description of monument found or placed and all other evidence used as a basis for monument location; including all monuments and related measurements required if the corner location is reestablished by lost corner proportionate methods. Also indicate name of original surveyor, survey date, corner monument set and established bearing trees, witness or reference monuments with ties from available records.

Found and accepted an old rusted 1/2" dia. steel rod with threaded top end 7" below existing blacktop roadway pavement at this corner location and I drove a 1" dia. by 24" long iron pipe over the rod with uncapped top flush with pavement surface; I also drove 1/4" dia. by 2 1/2" long PK nails 12" North, South, East and West of the iron pipe center on cardinal right lines thru the center to aid future usage. I also found an old tipped 1/2" dia. bolt with square head 5" above grade of shallow small hole and about 29 1/2" West of steel rod in roadway, and an old squared wood witness post with faint scribing about 12" West of the bolt found. I drove a standard 2" dia. by 30" long aluminum pipe monument with stamped Oneida County cap over the old bolt as a new reference monument, and placed several small rocks as a cairn around cap. In 1860, Millard/GLO set a wood post as the original 1/4 corner and marked OBTs, an 18" Pw N05°E 24 lks and a 22" Py S40°E 40 lks, all of which are now obliterated within roadway area. In 1958, Branham drove a 1/2" I.P. at a vit. cor. that he believed Wincoetsen marked "30' West to Cor." and also noted a 1/2" dia. long bolt at the 1/4 corner just West of centerline of a blacktop road; he also noted a 15" Pr BT S77 1/2°W 139 lks, now a low cut rotted 22" stump, an old Pw stump due East 74 lks, which is still there in good shape, and a 6" Popple 12 lks North of the Pw stump, which is now a 5' tall dead stub with long open West face blaze. In 1974, McMown notes an iron pipe 30' West of this corner, not found, per Plat of Survey C-513 Oneida Co. records. In 1995, T. Loftus found an iron rod at the corner per his Plat of Survey B-3214 Oneida Co. records. This recovery completed July 10, 1998; there were no witnesses other than vehicular drive-bys almost continuously.

Plan view map of monument location with bearing and distance ties to a minimum of four(4) described witness or reference monuments of concrete, natural stone, iron, live bearing trees or equivalent material. If applicable, also show a minimum of two(2) bearing and distance ties to any other monument found and not accepted; including the bearing and distance from the accepted monument. Indicate the basis for bearings of reference ties if not referenced to magnetic north.



WITNESS MONUMENT TIES:

- ① 1" dia. by 24" iron pipe set with yellow poly Reference Mark cap 6" above grade S87°E 34.95'; rocks placed around base as a cairn on side of steep road bank cut.
- ② New BT 10" Pw S60°E 57.60'.
- ③ Standard 2" dia. x 30" long alum. pipe monument set with stamped Oneida cap in a cairn of rocks N87°W 29.60'. (See notes above).
- ④ New BT 5/8" Aspen N54°W 50.70'.

Note: Standard white poly 'T' marker post set 7" South of West Witness No. 3. Corner is 10.9' West of East edge of existing 23' wide blacktop mat.

SCALE: 1" = 30'

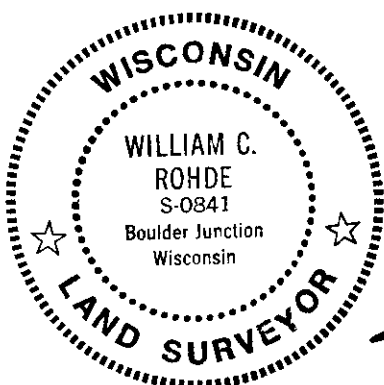
Unless otherwise indicated, all bearing tree ties are to a .25" dia. by 2.5" long PK nail with a 1.25" dia. steel washer driven into unblazed right face and a .25" dia. by 2.5" long PK nail with a 2" dia. steel washer stamped 'BT' is also driven into unblazed face of bearing tree at DBH; the basis for measured bearings is magnetic to nearest degree and all tie distances are horizontal measure to nearest 1/100th feet.

LAND SURVEYOR CERTIFICATION:

I, William C. Rohde, hereby certify that I am a duly licensed Professional Land Surveyor in Wisconsin, that this USPLS monument location was determined by me or under my direction and control, and that this U.S. Public Land Survey Monument Location Record is true and correct to the best of my knowledge and belief.

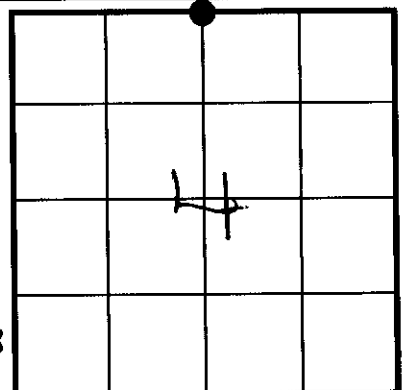
William C. Rohde Date: 7-10-98
Signature

This form is intended to fulfill requirements of Chapter A-E 7.08 (3)(a)(b)(c)(d)(e)(f)(g)(h)(i) U.S. Public Land Survey Monument Location Record, Wisconsin Administrative Code. Use reverse side for geodetic location data and/or continuation purposes.



RLS SEAL

SHEET NO. 1 OF 1



INDEX NO.

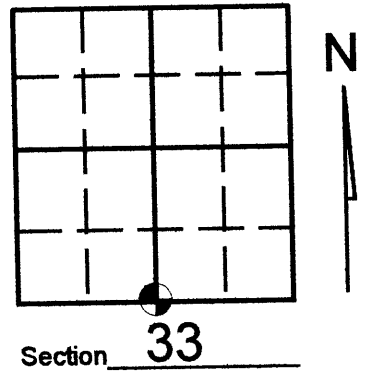
SECTION LOCATION MAP

INDEX NO. A-11
37 07 33 00 20

U.S. PUBLIC LAND SURVEY MONUMENT RECORD

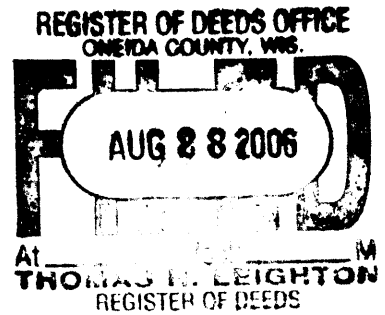
Note: This form is intended and designed to fulfill all requirements of Wisconsin Administrative Code, Chapter A-E 7.08 U.S. Public Land Survey Monument Record (3)(a)(b)(c)(d)(e)(f)(g)(h)(i). An additional sheet may be added if necessary to conform with said requirements.

(a) Corner location: Township 37 North
 Range 07 (East) West
 Town/City/Village CASSIAN
 County ONEIDA



(b) (f) (g) (h) Description of monument found at this corner and if it was accepted, state all evidence (material, testimonial, occupational, plats, records, other monuments) used as a basis for accepting. If not accepted or if nothing was found, state evidence used as basis for establishing location. If reestablished through lost corner proportionate methods, indicate all monuments, distances and directions used to establish. Indicate type of monument found or set and sign post.

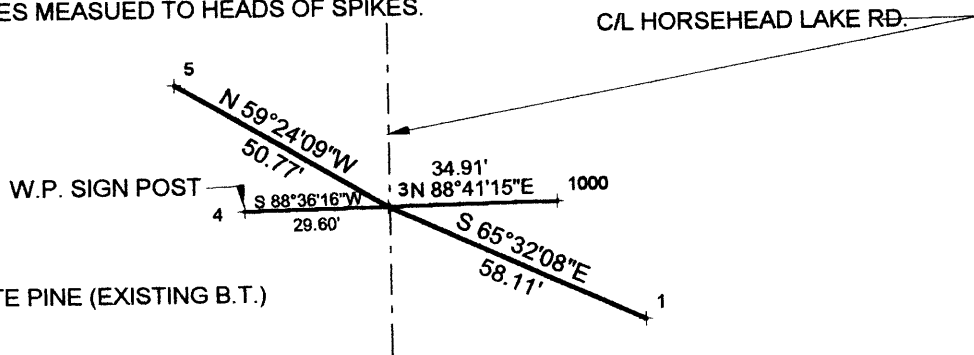
-08/03/06- Kevin Bixby found 1" iron pipe as noted on U.S. Public Land Form A-11



(c) (d) (e) Plan view of corner with ties to at least 4 witness monuments. If in disagreement with previously established corner, show the distances between the two corners and also indicate the ties to the N disputed corner.

SCALE: 1"=40'

ANGLES AND DISTANCES MEASURED WITH TOTAL STATION. DISTANCES MEASURED TO HEADS OF SPIKES.



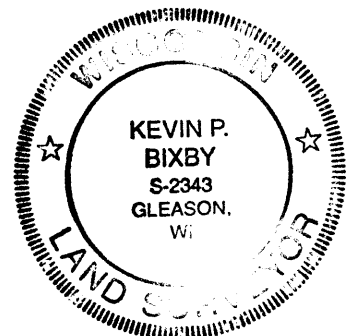
LEGEND

- 1- SET SPIKE IN 12" WHITE PINE (EXISTING B.T.)
- 3- FOUND 1" IRON PIPE
- 4- FOUND O.C.M.-W.C.
- 5- SET SPIKE IN 8" ASPEN (EXISTING B.T.)
- 1000- FOUND 1" CAPPED IRON PIPE

(i) I, KEVIN P. BIXBY

(type or print name) certify that the corner location on this record was determined by me or under my direction and control and that this U.S. Public Land Survey Monument Record is correct and complete to the best of my knowledge and belief.

POST-CONSTRUCTION



Index No. 2-11

Kevin P. Bixby
Signature

08/04/06
Date

Stamp

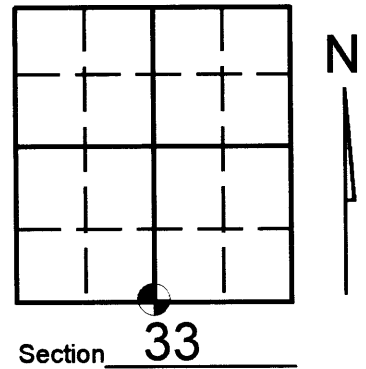
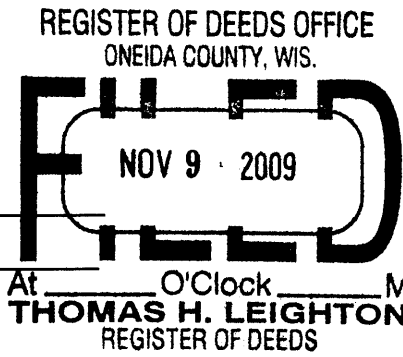
3707330020

U.S. PUBLIC LAND SURVEY MONUMENT RECORD

Note: This form is intended and designed to fulfill all requirements of Wisconsin Administrative Code, Chapter A-E 7.08 U.S. Public Land Survey Monument Record (3)(a)(b)(c)(d)(e)(f)(g)(h)(i). An additional sheet may be added if necessary to conform with said requirements.

(a) Corner location: Township 37 North
 Range 07 East/West

Town/City/Village CASSIAN
 County ONEIDA



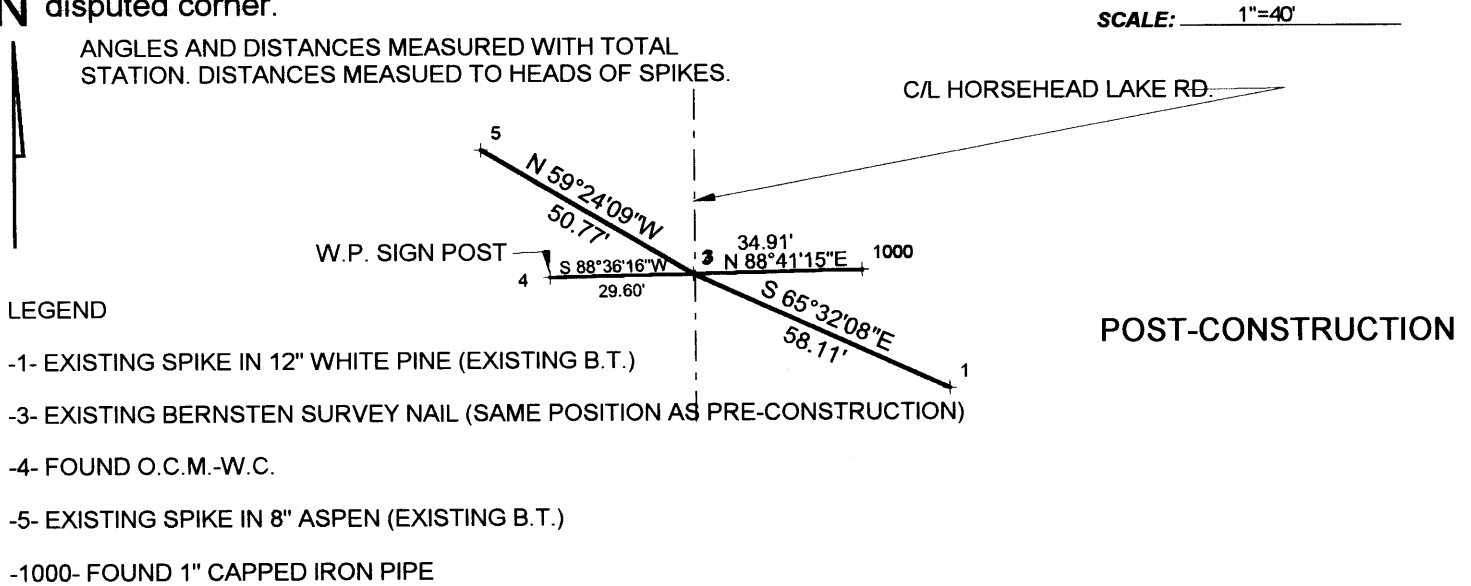
(b) (f) (g) (h) Description of monument found at this corner and if it was accepted, state all evidence (material, testimonial, occupational, plats, records, other monuments) used as a basis for accepting. If not accepted or if nothing was found, state evidence used as basis for establishing location. If reestablished through lost corner proportionate methods, indicate all monuments, distances and directions used to establish. Indicate type of monument found or set and sign post.

-08/03/06- Kevin Bixby found 1" iron pipe as noted on U.S. Public Land Form A-11

05/04/09- PRE-CONSTRUCTION: Kevin Bixby found and flagged witnesses per U.S. Public Land form A-11 and witnessed as shown below.

11/06/09 - POST CONSTRUCTION: Kevin Bixby Found Bernsten nail per Oneida County survey map number C2652.

(c) (d) (e) Plan view of corner with ties to at least 4 witness monuments. If in disagreement with previously established corner, show the distances between the two corners and also indicate the ties to the N disputed corner.

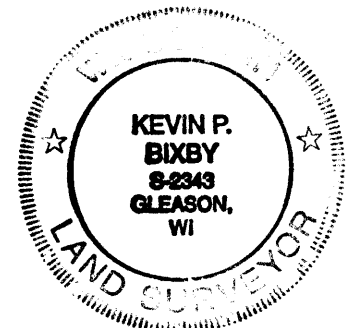


(i) I, KEVIN P. BIXBY

(type or print name) certify that the corner location on this record was determined by me or under my direction and control and that this U.S. Public Land Survey Monument Record is correct and complete to the best of my knowledge and belief.

Kevin P. Bixby
 Signature

11/05/09
 Date



Stamp

370733 0020

Index No. 211