

U.S. PUBLIC LAND SURVEY MONUMENT LOCATION RECORD

Recorders Data

CORNER: NW Section SECTION: 2 TOWNSHIP 36 NORTH RANGE 7 EAST/WEST

FOR M.C. CORNER INDICATE: NAME OF WATERWAY N/A SECTION LINE N/A

(CITY)(VILLAGE)(TOWN) OF: Woodboro COUNTY OF: Oneida

Description of monument found or placed and all other evidence used as a basis for monument location; including all monuments and related measurements required if the corner location is reestablished by lost corner proportionate methods. Also indicate name of original surveyor, survey date, corner monument set and established bearing trees, witness or reference monuments with ties from available records.

Found and accepted a railroad spike driven flush with existing blacktop pavement, 22.7' South of north edge of mat, per existing records, and as noted herein. In 1860, Millard/GLO set a wood post as the original section corner and marked OBTs, a 16" Py N21°E 10 lks, an 18" Py S76°E 52 lks, an 18" Pw N50°W 31 lks and an 18" Pw S16°W 22 lks, all of which are now gone within existing roadways.

In 1936, Maine notes indicate an Official iron pipe with stamped brass cap offset 33 links North of section corner near juncture of USH 8 and Woodboro Road centerlines and that all BTs were destroyed. A 1937 Plat of Survey by Maine of Section 3, Township 36 North, Range 7 East, filed as L-1044 Oneida County records, also indicates foregoing offset monument.

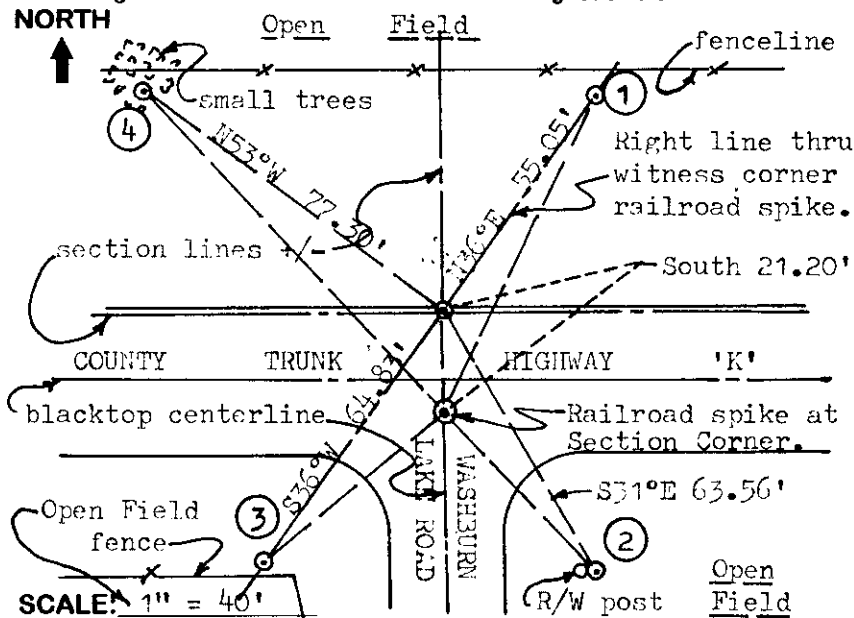
In 1967, Cain/Wisconsin DOT, prepared a recovery record now filed as L-586 in Oneida County records, referencing Maines 1936 brass capped iron pipe witness monument and a railroad spike in pavement at the section corner 21.20' South.

In 1996, Loftus found a railroad spike at the section corner and noted reference monuments in place, per his Plat of Survey filed as B-3470 in Oneida County records.

In 1997, Loftus again noted a railroad spike at the section corner, per his Plat of Survey filed as B-3715 in Oneida County records.

This recovery completed August 10, 1998; there were no witnesses other than vehicle traffic.

Plan view map of monument location with bearing and distance ties to a minimum of four(4) described witness or reference monuments of concrete, natural stone, iron, live bearing trees or equivalent material. If applicable, also show a minimum of two(2) bearing and distance ties to any other monument found and not accepted; including the bearing and distance from the accepted monument. Indicate the basis for bearings of reference ties if not referenced to magnetic north.



WITNESS MONUMENT TIES:

- ① Standard Wis DOT stamped reference mark tablet found in top of 14" dia. concrete post flush with grade at N29°E 73.15'; Std white poly 'T' post 10" NE of Wis DOT monument.
- ② 1" dia. by 24" long iron pipe set with standard yellow poly reference mark cap 4" above grade & along East side of a standard yellow R/W post, S44°E 47.37'.
- ③ Same as Witness No. 1 above, at S55°W 49.29'.
- ④ 1" dia. by 24" long iron pipe set with standard yellow poly reference mark cap flush with grade at 90.95' N42°W with standard 'T' post 18" E.

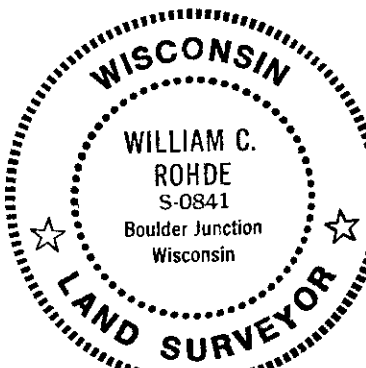
Unless otherwise indicated, all bearing tree ties are to a .25" dia. by 2.5" long PK nail with a 1.25" dia. steel washer driven into unblazed right face and a .25" dia. by 2.5" long PK nail with a 2" dia. steel washer stamped 'BT' is also driven into unblazed face of bearing tree at DBH; the basis for measured bearings is magnetic to nearest degree and all tie distances are horizontal measure to nearest 1/100th feet.

LAND SURVEYOR CERTIFICATION:

I, William C. Rohde, hereby certify that I am a duly licensed Professional Land Surveyor in Wisconsin, that this USPLS monument location was determined by me or under my direction and control, and that this U.S. Public Land Survey Monument Location Record is true and correct to the best of my knowledge and belief.

William C. Rohde Date: 8-22-98
Signature

This form is intended to fulfill requirements of Chapter A-E 7.08 (3)(a)(b)(c)(d)(e)(f)(g)(h)(i) U.S. Public Land Survey Monument Location Record, Wisconsin Administrative Code. Use reverse side for geodetic location data and/or continuation purposes.



RLS SEAL

SHEET NO. 1 OF 1

		2	

INDEX NO.

SECTION LOCATION MAP

INDEX NO. A 17
3707 340000