

CERTIFIED LAND CORNER RESTORATION
U.S. PUBLIC LAND SURVEY MONUMENT RECORD

State of Wisconsin

County of ONEIDA

ss.

I James F. Kasson, do hereby certify that on the _____ day of _____, 19____, I found evidence of the Southeast Section corner of Section 36 Township 37 N, Range R 7E, Fourth Principal Meridian, as described hereon; and that from this evidence I established a new monument and accessories as described hereon to perpetuate the original location of this corner:

Description of original monument and accessories and subsequent restorations:

No Evidence of original found which was: Wood post 24" W. pine 579w 20ks sugar maple 16" N86W 45ks, W Birch 7" Birch 59 1/2 E 49 1/2 ks, W Birch 7", N77E 12 1/2 ks corner perpetuated by D.H. Vaughn and by Maine who set official brass capped monument on June 2nd, 1936 & marked following B.T's.

W. pine stmp ~~24" x 24" x 24"~~
15" S71 3/4 W 0.97'

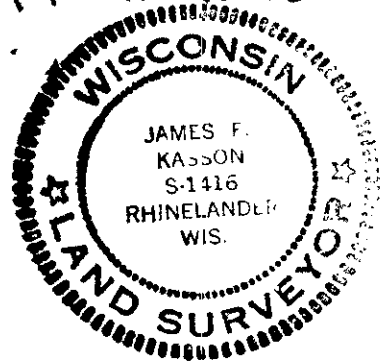
MAINE FOUND VAUGHNS STAKE & SET PIPE OVER IT.

Description of corner evidence found:

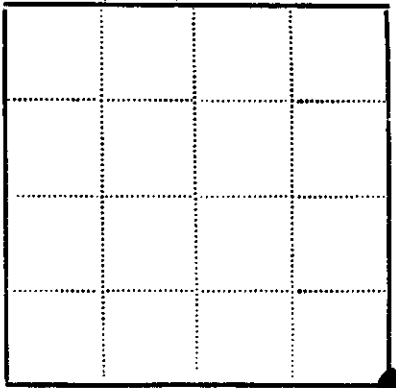
Found brass capped county monument and possible remains of maines stmp. Found 3 witnesses as follows: pk nail in 6" oak, N86W, 16.86'
10" oak, S16W, 7.24'
7" oak, N64E 17.97'

Description of monument and accessories I established to perpetuate the location of this corner:

LEFT MONUMENT & ACCESSORIES & SET S 1/16 th corner N1°10'38" E 1321.92' 1" iron pipe & 1" iron pipe N1°10'38" E 691.06' on northerly row line of Oak Rd.



Section 36 T37 N R7E



● - Corner monument restored
□ -

Resident witnesses _____

Dated at Rhinelander Wisconsin, this 5 day of Oct 1982.

Signature James F. Kasson Title _____
(County Surveyor, Registered Land Surveyor, or other duly authorized official)

Surveyors Registration No. _____

Office of Register of Deeds County of Oneida

I hereby certify that the within instrument was filed in this office for record on the 11 day of June 1986, and was filed in Book No. _____ Page No. _____ of County Records.

Signature Doris Verage Kuehn Title Register of Deeds
Cynthia A. Pites, Deputy

Township _____, Range _____, Section _____, Index No. _____, Page No. _____

2-25

3707360000

U.S. PUBLIC LAND SURVEY MONUMENT RECORD

Note: This form is intended and designed to fulfill all requirements of Wisconsin Administrative Code, Chapter A-E 7.08 U.S. Public Land Survey Monument Record (3) (a)(b)(c)(d)(e)(f)(g)(h)(i). An additional sheet may be added if necessary to confirm with said requirements.

(a) Corner Location:

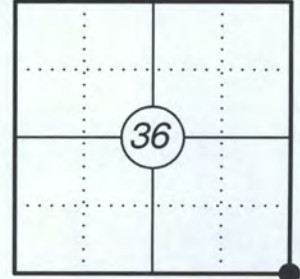
Southeast Corner Section 36
 Township 37 North
 Range 7 East
 Town of Cassian
 County of Oneida

Published Oneida County Coordinates

N=167377.74
 E=228967.22

Observed Oneida County Coordinates (NAD 83/2011)

N=167377.74
 E=228967.19



(b) History of Original Corner:

Original Surveyor: Alfred Millard
 Date of Survey: September 1860

Original Bearing Trees: 24" White Pine - S79°W, 28 Links
 16" Sugar Maple - N 80°W, 45 Links
 7" White Birch - N 77°E, 13 Links
 7" White Birch - S9 1/2°E, 49 Links

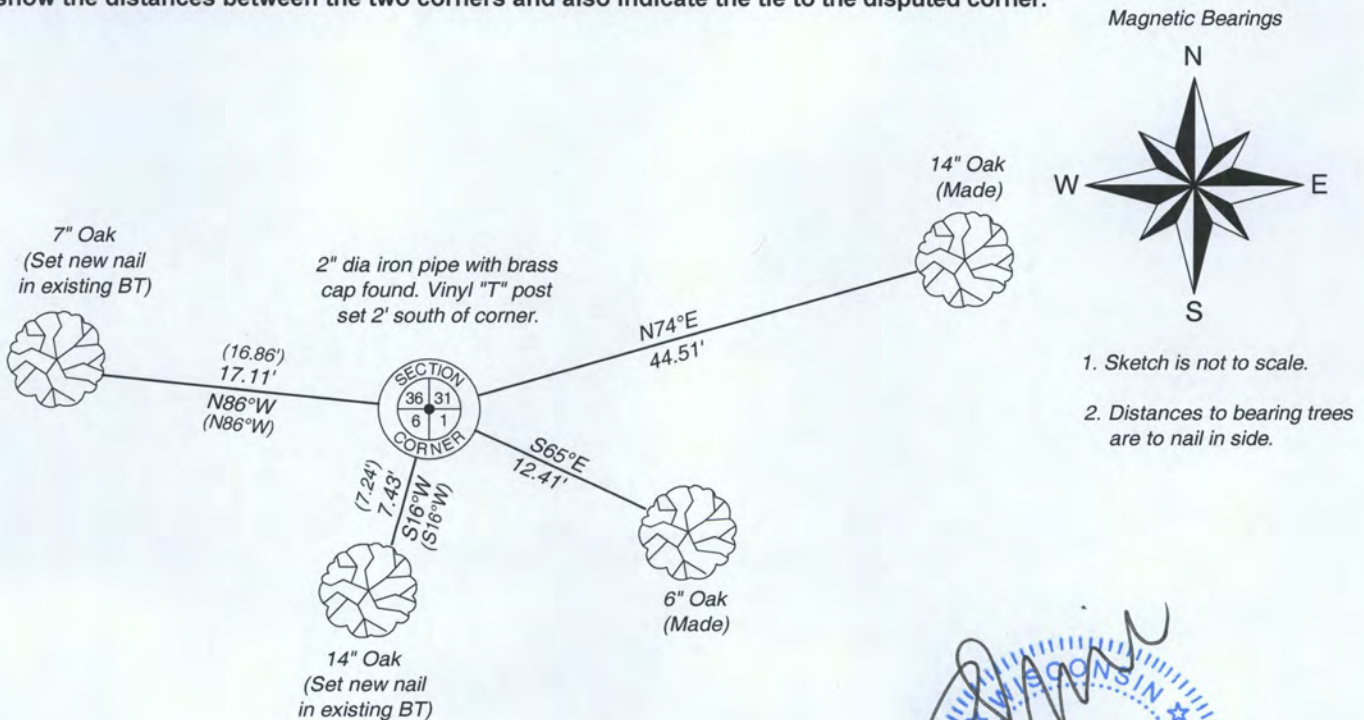
(f)(g)(h) Description of monument found at this corner and if it was accepted, state all evidence (material, testimonial, occupational, plats, records, other monuments) used as a basis for establishing location. If reestablishing through lost corner proportionate methods, indicate all monuments, distances, and directions used to establish. Indicate type of monument and sign post found or set.

06/02/1936 - Corner perpetuated by D.H. Vaughn and by Maine who set official brass capped monument on June 2, 1936 and marked the following bearing trees: 15" White Pine stump S71-3/4°W, 0.97'. Maine found Vaughn's stake and set pipe over it.

06/1986 - James Kasson found a brass capped monument and possible remains of Maines stump. He also found 3 existing bearing trees all with a P.K. nail in them as follows: 6" Oak N86°W 16.86', 10" Oak S16°W 7.24', 7" Oak N64°E 17.97'. (See existing U.S.P.L.S. Monument Record).

11/21/2016 - I found and accepted a 2" diameter iron pipe with a brass capped stamped to identify corner. I found two existing bearing trees. I set a new nail in both existing bearing trees and made two new bearing trees to witness the corner as shown below.

(c)(d)(e) Plan view of corner with ties to at least four witnesses. If in disagreement with previously established corner, show the distances between the two corners and also indicate the tie to the disputed corner.



Certification

I, Gregory S. Maines, Professional Land Surveyor No. 2729, hereby certify that the corner location on this record was referenced by me or under my direction and control and that this U.S. Public Land Survey Monument Record is complete to the best of my knowledge and belief.

GREGORY S. MAINES
 S-2729
 EAGLE RIVER, WI
 LAND SURVEYOR

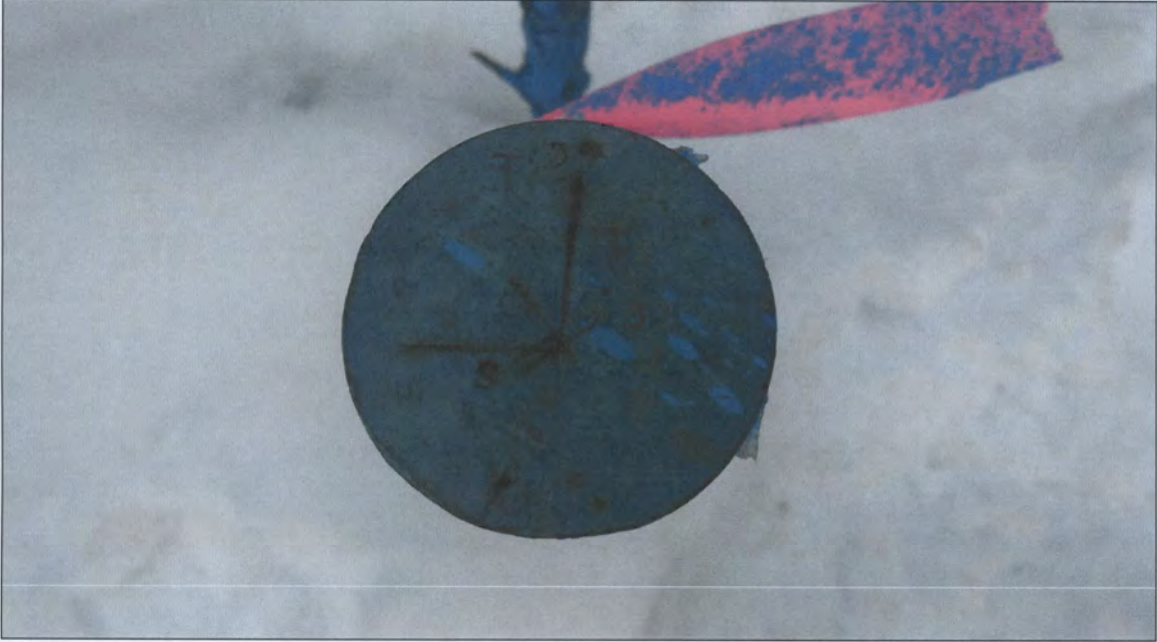
REGISTER OF DEEDS OFFICE
 ONEIDA COUNTY
FILED

APR 21 2017

AT _____ O'CLOCK _____ M
 KYLE J. FRANSON
 REGISTER OF DEEDS

SE Corner - Section 36, T 37 N, R 7 E

Monument

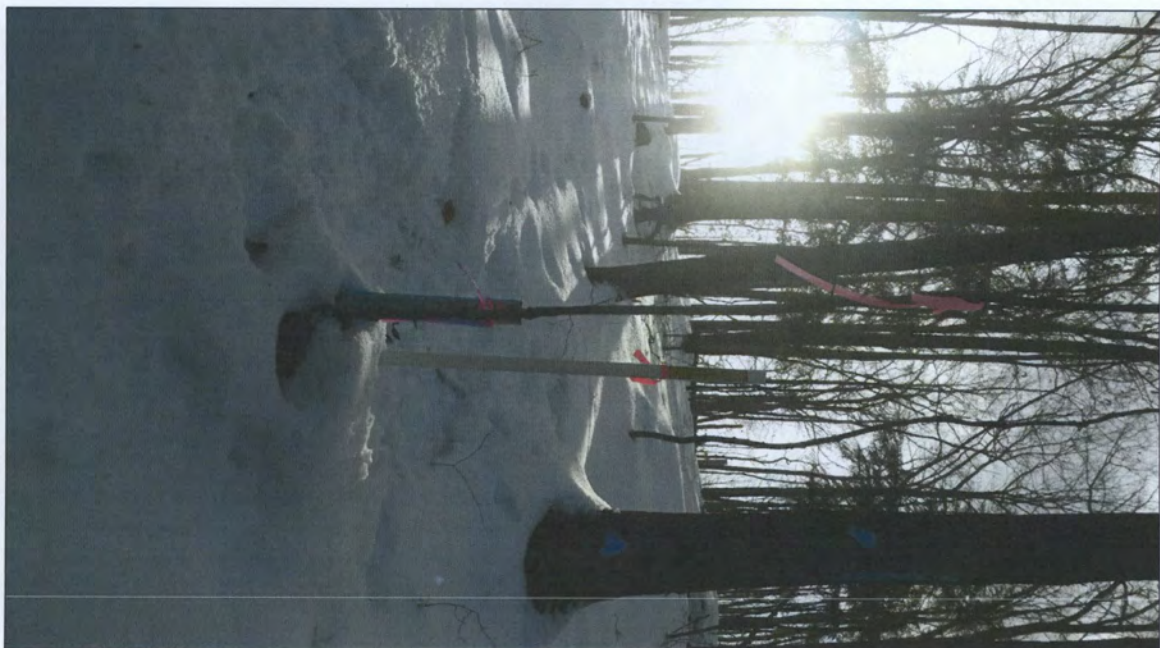


Facing North



Facing East

SE Corner - Section 36, T 37 N, R 7 E



Facing South



Facing West