

CERTIFIED LAND CORNER RESTORATION

State of Wisconsin }
County of Oneida } ss.

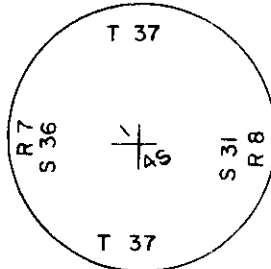
Michael J. Romportl, do hereby certify that on the 28th day of December, 1981, I found evidence of the west 1/4 corner of Section 31 Township 37 North Range 8 East, Fourth Principal Meridian, as described hereon; and that from this evidence I established a new monument and accessories as described hereon to perpetuate the original location of this corner:

Description of original monument and accessories and subsequent restorations:

- Sept. 7, 1860 Alferd Millard set org. 1/4 stake B.T.s Aspen 5 N 3/4 W 258lks. Aspen 6 N 1/2 E 260lks.
- June 8, 1936 V.M. Maine fd. org. Gov't 1/4 stake buired deep in wet marsh. Org. staked tipped over and buired deep in marsh, it was scribed and very old. Org. B.T.s burned up. Set an official iron pipe brass cap stamped.
- 1949 F.R. Wincentsen at cor.
- June 1972 Herbert Moore recovered brass cap.

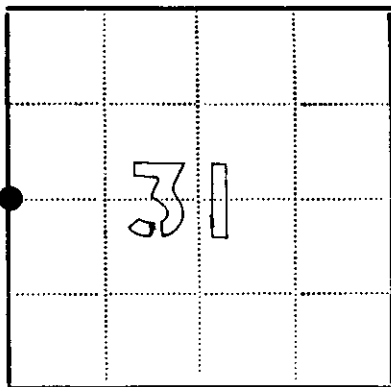
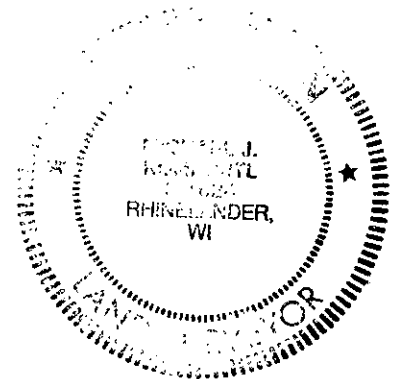
Description of corner evidence found:

- fd. brass cap iron pipe stamped as shown in an open marsh with a post alongside cor.



Description of monument and accessories I established to perpetuate the location of this corner:

- pipe in good condition made the following b.T.s
- 8" Oak N 55° W 154.10'
- 10" Oak S 25° W 200.30'
- scribed trees B T
- magnetic bearings
- measured to P.K. in face of blaze



Legend: Circle - Corner monument restored, Square -

Resident witnesses.....

Dated at Rhinelander Wisconsin, this 28th day of December 1981.

Signature [Handwritten] Title Reg. Land Surveyor (County Surveyor, Registered Land Surveyor, or other duly authorized official)

Surveyors Registration No. 1624

Office of Reg. of Deeds County of Oneida

I hereby certify that the within instrument was filed in this office for record on the 11 day of June 1981 and was filed in Book No. Page No. of County Records.

Signature [Handwritten] Title Register of Deeds

Township, Range, Section, Index No., Page No.

3707362000

U.S. PUBLIC LAND SURVEY MONUMENT RECORD

Note: This form is intended and designed to fulfill all requirements of Wisconsin Administrative Code, Chapter A-E 7.08 U.S. Public Land Survey Monument Record (3) (a)(b)(c)(d)(e)(f)(g)(h)(i). An additional sheet may be added if necessary to confirm with said requirements.

(a) Corner Location:

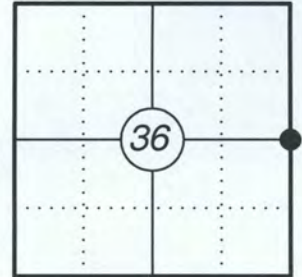
East 1/4 Corner Section 36
 Township 37 North
 Range 7 East
 Town of Cassian
 County of Oneida

Published Oneida County Coordinates

N=170021.58
 E=228952.69

Observed Oneida County Coordinates (NAD 83/2011)

N=170021.56
 E=228952.66



(b) History of Original Corner:

Original Surveyor: Alfred Millard
 Date of Survey: September 1860

Original Bearing Trees: 5" Aspen - N 3/4°W, 258 Links
 6" Aspen - N 1/2°E, 260 Links

(f)(g)(h) Description of monument found at this corner and if it was accepted, state all evidence (material, testimonial, occupational, plats, records, other monuments) used as a basis for establishing location. If reestablishing through lost corner proportionate methods, indicate all monuments, distances, and directions used to establish. Indicate type of monument and sign post found or set.

06/08/1936 - V.M. Maine found original Government 1/4 stake buried deep in marsh. Original stake tipped over and buried deep in marsh. It is scribed and very old. Original BT's burned up. Set official iron pipe brass cap stamped.

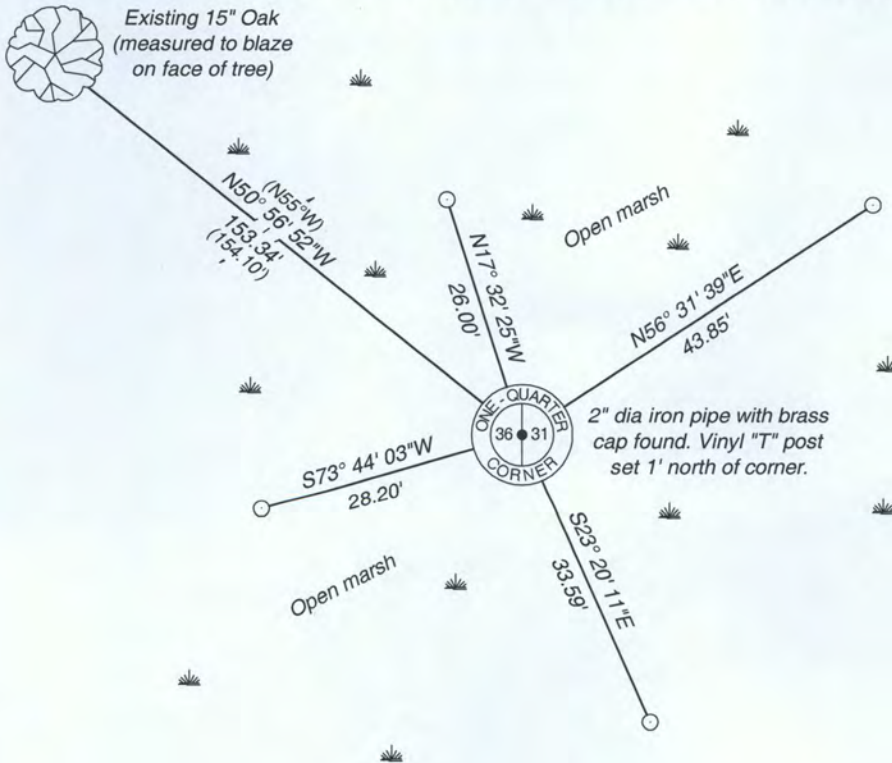
1949 - F.R. Wincentsen at corner.

06/1972 - Herbert Moore recovered brass cap.

12/28/1981 - Michael J. Romportl found brass cap iron pipe stamped in an open marsh with a post alongside corner. Made two BT's: 8" Oak N55°W, 154.10' and 10" Oak S25°W, 200.30'. (See existing Certified Land Corner Restoration form).

11/21/2016 - I found and accepted a 2" diameter iron pipe with brass cap stamped to identify the corner in an open marsh. I found one of the existing bearing trees from 1986. I set four new reference monuments to witness the corner as shown below.

(c)(d)(e) Plan view of corner with ties to at least four witnesses. If in disagreement with previously established corner, show the distances between the two corners and also indicate the tie to the disputed corner.



Oneida County Grid Bearings



Sketch is not to scale

○ 1" dia. iron pipe set

Certification

I, Gregory S. Maines, Professional Land Surveyor No. 2729, hereby certify that the corner location on this record was referenced by me or under my direction and control and that this U.S. Public Land Survey Monument Record is complete to the best of my knowledge and belief.

REGISTER OF DEEDS OFFICE
 ONEIDA COUNTY
FILED

APR 21 2017

AT _____ O'CLOCK _____ M
 KYLE J. FRANSON
 REGISTER OF DEEDS

E 1/4 Corner - Section 36, T 37 N, R 7 E

Monument



Facing North



Facing East

E 1/4 Corner - Section 36, T 37 N, R 7 E



Facing South



Facing West