

U.S. PUBLIC LAND SURVEY MONUMENT RECORD

REGISTER OF DEEDS OFFICE
ONEIDA COUNTY
FILED

AUG 28 2023

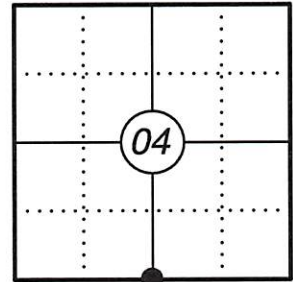
KYLE J. FRANSON
REGISTER OF DEEDS

This form is intended and designed to fulfill all requirements of Wisconsin Administrative Code, Chapter A-E 7.08 U.S. Public Land Survey Monument Record (3) (a)(b)(c)(d)(e)(f)(g)(h)(i). An additional sheet may be added if necessary to confirm with said requirements.

(a) Corner Location:

S1/4 Corner Section 4
Township 37 North
Range 8 East
Town of Newbold
County of Oneida

Corner ID: 3708040020



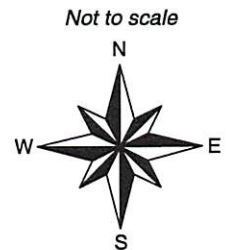
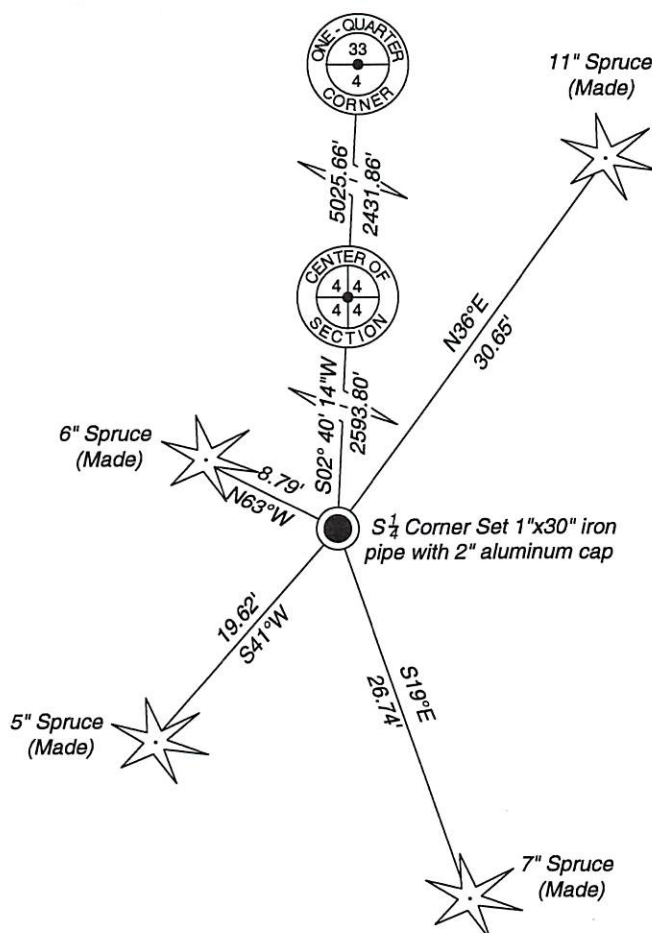
(b) History of Original Corner:

Original Surveyor: William Daugherty Original B.T.'s: Tamarac 10" N11°W 20 lks
Date of Survey: July 1863 Tamarac 8" S45°W 31 lks

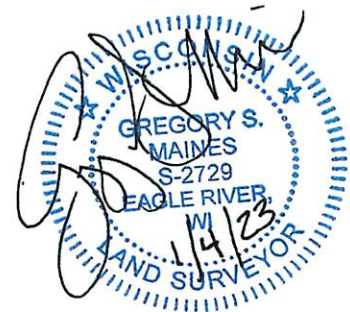
(f)(g)(h) Description of monument found at this corner and if it was accepted, state all evidence (material, testimonial, occupational, plats, records, other monuments) used as a basis for establishing location. If reestablishing through lost corner proportionate methods, indicate all monuments, distances, and directions used to establish. Indicate type of monument and sign post found or set.

- 1906 D.H. Vaughan, OLDFLBK5 Pg 45-46 indicates: run west from (SE cor Sec 4) 26.33 set post from both orig BT. Notes also indicate: Set Center 1/4 W Pine S 30 N58°W 37 1/2'; Y Pine S 14 S 67 1/2'. Distance from center to N 1/4 36.39; S 1/4 39.30; E 1/4 27.03; W 1/4 40.35.
- 1930 R.H. Hall, HCHallBK1 pg 77: indicates found DHV's NW corner, West 1/4, N 1/4 and Center of Sec 4 while surveying the NW 1/4 of Section 4. At center found Vaughan's old post and drove a flat iron bar; BT's Black Pine 6" S51 1/2 °W 15.1'; DHV stump N62°W 24.7'; DHV stump S71°E 43.6'.
- 03/13/1963 Genisot OC Survey Map # C1625 show the NE 1/4 section subdivision and finds Vaughans/Hall center 1/4.
- 01/02/1964 Genisot OC Survey Map # B5416 indicates set SE 1/16 corner and S 1/16 on east line.
- 03/17/2017 I did not find the corner, so I used Vaughan/Hall's C 1/4 and N 1/4 corner to re-establish the S 1/4 of Section 4 by extending the N-S 1/4 line south Vaughan's distance 39.30 ch from C 1/4. This position checks with the Genisot positioning of the corners in the SE 1/4. I set a 1"x30" iron pipe with a 2" aluminum cap at the corner and made four bearing trees as noted below. See OC Survey Map # C2918 for N-S 1/4 line.

(c)(d)(e) Plan view of corner with ties to at least four witnesses. If in disagreement with previously established corner, show the distances between the two corners and also indicate the tie to the disputed corner.



- * Set Vinyl "T" post 1.0' north of corner
- * Distances to bearing trees are to nail in side.



Certification

I, Gregory S. Maines, Professional Land Surveyor No. 2729, hereby certify that the corner location on this record was referenced by me or under my direction and control and that this U.S. Public Land Survey Monument Record is complete to the best of my knowledge and belief. REF:2016217

Index No.: E-11