

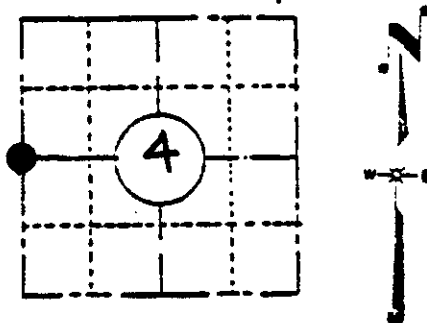
Stock No. 26273

U. S. PUBLIC LAND SURVEY MONUMENT RECORD

INSTRUCTIONS:

(a) Identify the corner by reference to the U.S. public land survey system.

W 1/4 COR., SECTION 4,
TOWNSHIP 37 NORTH,
RANGE 8 EAST,
ONEIDA COUNTY, WIS.



LOCATION SKETCH

(Location of landmark indicated by "●")

This record shall show the location of the corner and shall include all of the following nine elements (a through i).

- William W. Daugherty set 4 cor. 40.44ch from sec, cor. in July 1869. L.L.S. March 10 & 30 & 15; 17. Pine 10 S 40 W 20
- 1905 & 1906 D.H. Vaughan went to NE cor. S. 5 round stump of NE L.L.S. OR also SE L.L.S. and post 1' below surface. Run S..... 40.00 could not find 4 post 79.41 Fall 33 S of Cor. went and set 4 cor. by proportional measure. L.L.S. 18 1831 71 " " 24 441. 13
- 1930 Ray Hall has a iron pipe in W. side town road a line of road east. L.L.S. L.L.S. found in place no new witnesses. Subdivided the land.
- 1970 J. L. Landow found iron bolt in west side road

Compared with all record data and accepted as correct.

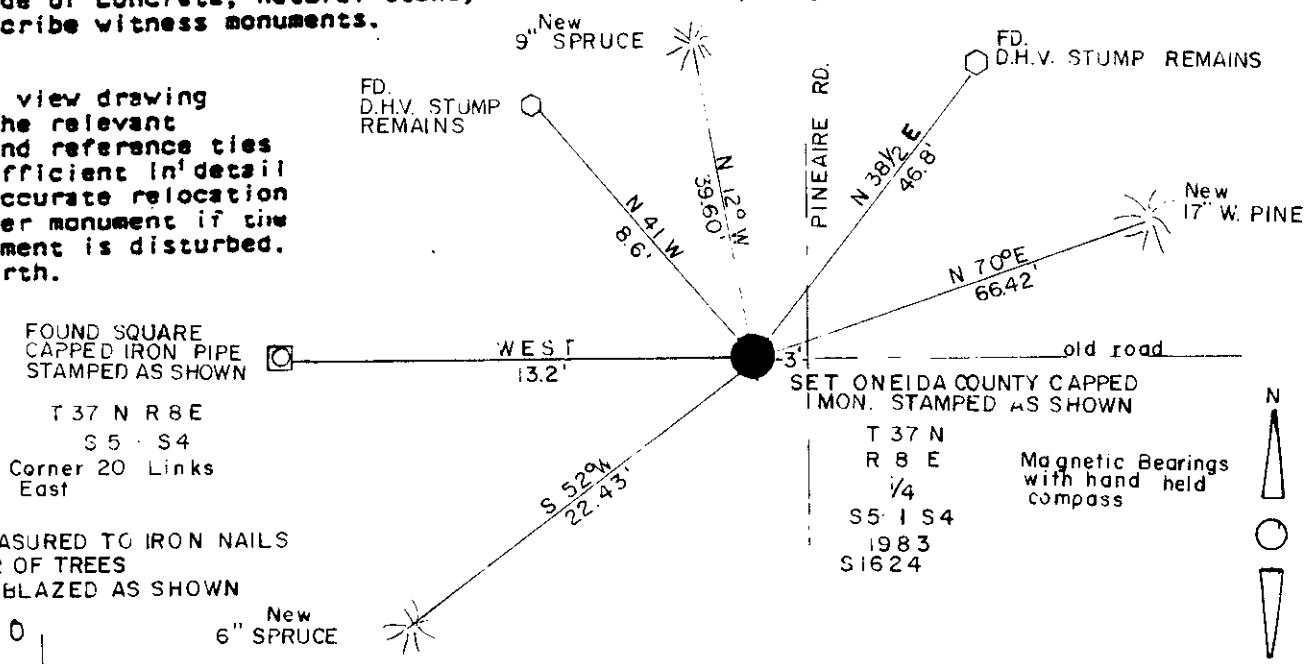
Robert H. Winat, Oneida Co. Surv.
9 November 1983

(b) Describe any record evidence, monument evidence, occupational evidence, testimonial evidence or any other material evidence you considered, and whether the monument was found or placed.

At this corner I found an iron bolt in the west side of town road and old road running east. I also found the remains of the L.L.S. hall found. I replaced the iron bolt with an Oneida County capped monument. In resurveying the L.L.S. we found hall's measurements were consistent with our measurements from this corner.

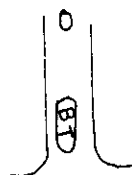
(c) In the plan view drawing below, provide reference ties to at least 4 witness monuments, or, if the location is within a municipality, to at least 2 witness monuments. (Witness monuments shall be made of concrete, natural stone, iron or other equally durable material, except wood.) Describe witness monuments.

(d) Show a plan view drawing depicting the relevant monuments and reference ties which is sufficient in detail to enable accurate relocation of the corner monument if the corner monument is disturbed. Indicate north.



- DISTANCES ARE MEASURED TO IRON NAILS IN APPROX. CENTER OF TREES

- TREES SCRIBED & BLAZED AS SHOWN



3708052000

69

(e) Describe any material discrepancy between the location of the corner as restored or reestablished and the location of that corner as previously restored or reestablished by distance and direction. Show the discrepancy on the plan view drawing under (d), above. Show the distances between the corner as previously restored or reestablished and (1) the corner as restored or reestablished, and (2) to at least 2 of the witness monuments shown on the drawing in (d), above.

None.

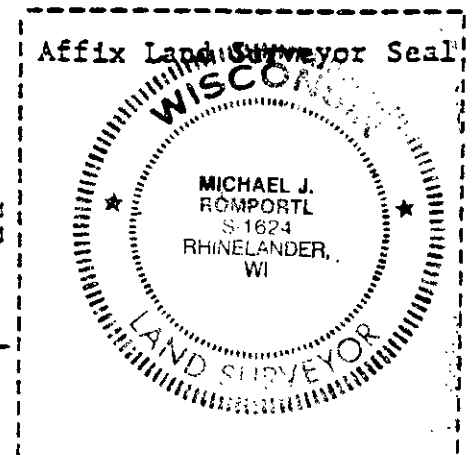
(f) Was the corner restored through acceptance of (1) an obliterated evidence location, or, (2) a found perpetuated location?

~ found perpetuated location

(g&h) Was the corner reestablished through lost corner proportionate methods? If so, show the method, including the directions and distances to other public land survey corners used as evidence or used for proportioning in determining the corner location?

n/a

REGISTER OF DEEDS OFFICE
ONEIDA COUNTY, WIS.
FILED
JUN 1 1986
At 4:00 O'clock P.M.
L J RIB VERAGE KUEHN
REGISTER OF DEEDS



(i) I, Michael J. Romportl, S. 1624
(type or print name) certify that the corner location shown on this record was determined by me or under my direction and control and that this U.S. Public Land Survey Monument Record is correct and complete to the best of my knowledge and belief.

Michael J. Romportl
Signature
Michael J. Romportl
Unico & Associates Inc.
Rhinelander, Wis.

8-3-83
Date