

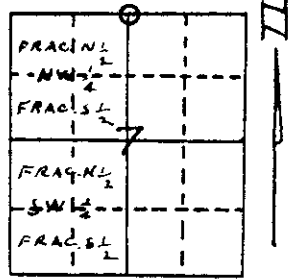
# U.S. PUBLIC LAND SURVEY MONUMENT RECORD

Note: This form is intended and designed to fulfill all requirements of Wisconsin Administrative Code, Chapter A-E 5.02, U.S. Public Land Survey Monument Record (3) (a) (b) (c) (d) (e) (f) (g) (h) (i). An additional sheet may be added if necessary to conform with said requirements.

(a) Corner location: Township 37 North  
 Range 8 East/West

Town/City/Village NEWBOLD

County ONEIDA



Section 7

(b) (f) (g) (h) Description of monument found at this corner and if it was accepted, state all evidence (material, testimonial, occupational, plats, records, other monuments) used as a basis for accepting. If not accepted or if nothing was found, state evidence used as basis for establishing location. If reestablished through lost corner proportionate methods, indicate all monuments, distances and directions used to establish.

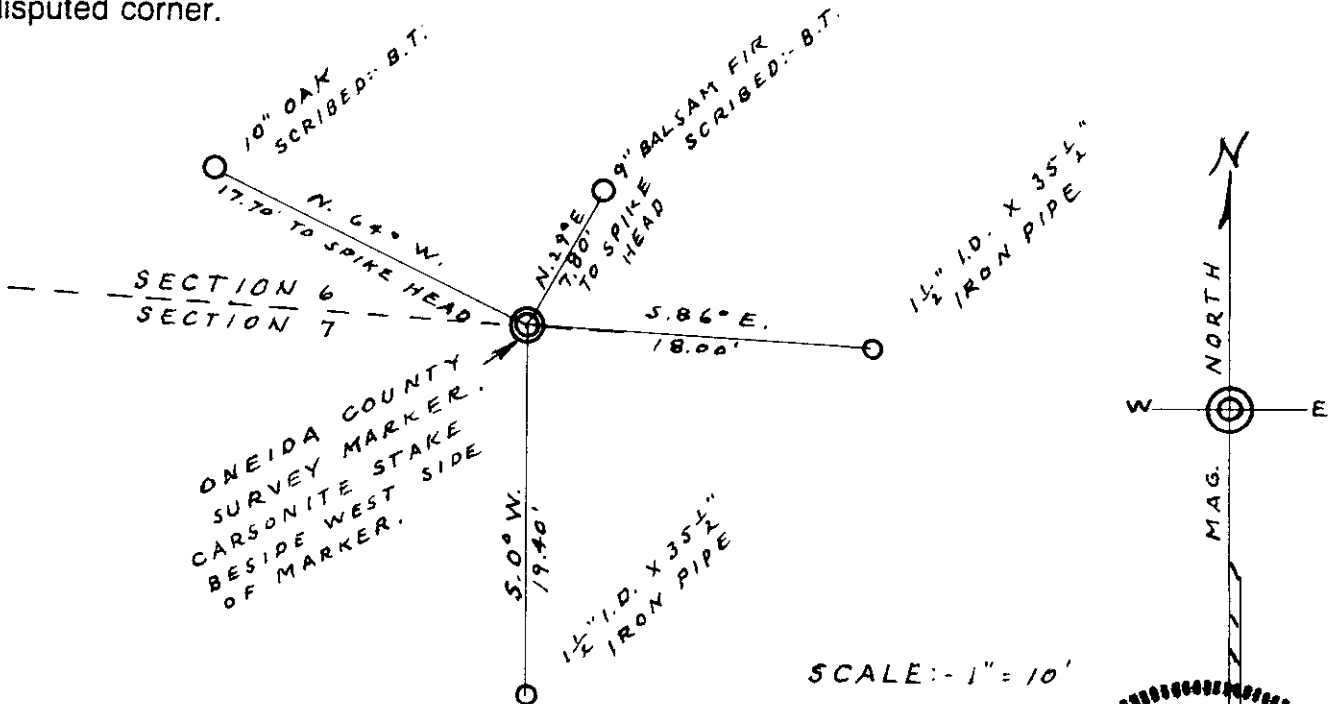
SAID RESTORED ONE QUARTER CORNER, COMMON TO SECTIONS 6 AND 7, T. 37 N., R. 8 E., IS THE CORNER SET BY FOREST R. WINCENTSEN, ONEIDA COUNTY SURVEYOR, DURING HIS SURVEYS IN THAT AREA IN 1949.

WE BEGAN AT AN APPROXIMATE NORTH 1/8 CORNER ON THE NORTH AND SOUTH 1/4 LINE AND RAN A COMPASS LINE N. 7 1/2° E. TO THE KNOWN AREA OF THE SAID 1/4 CORNER. ACCOMPANIED WITH JOE. LEMANSKI, JAMES M. POSKIE AND ED. POSPYCHALA, WE FOUND A ROTTED SQUARED WOOD POST, BELIEVED TO BE F. R. WINCENTSEN'S MARKER, 8 FT., MORE OR LESS, WEST OF OUR COMPASS LINE. WE FOUND THE POINT TO SAID POST OR MARKER, IN THE GROUND IN GOOD CONDITION, TWO UNSCRIBED BLAZED TREES FACED TOWARD SAID CORNER

NO EVIDENCE OF ANY OTHER CORNER OR MARKER, EXISTS IN THE AREA, EXCEPT FOR A PICKET SCRIBED 1/4 AND SET BESIDE THE POST POINT.

SAID ONE QUARTER CORNER LOCATION WAS USED BY IVAN BRANHAM IN HIS SURVEY AND SUBDIVISION OF SAID SECTION 7, DATED: 11-10-1953

(c) (d) (e) Plan view of corner with ties to at least 4 witness monuments. If in disagreement with previously established corner, show the distances between the two corners and also indicate the ties to the disputed corner.



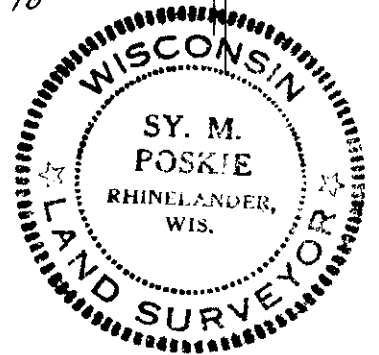
(i) I, SY. M. POSKIE  
 (type or print name) certify that the corner location on this record was determined by me or under my direction and control and that this U.S. Public Land Survey Monument Record is correct and complete to the best of my knowledge and belief.

*Sy. M. Poskie*

Signature

WIS. NO. S-00140

Date 11-14-1988



Index No. E-3

3708060020