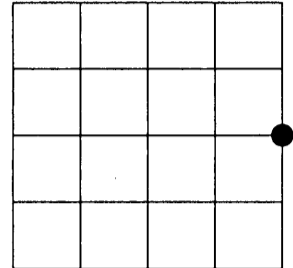
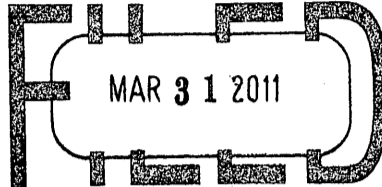


# U.S. PUBLIC LAND SURVEY MONUMENT RECORD

NOTE: This form is intended and designed to fulfill all requirements of Wisconsin Administrative Code, Chapter A-E 7.08 U.S. Public Land Survey Monument Record (3)(a)(b)(c)(d)(e)(f)(g)(h)(i). An additional sheet may be added if necessary to conform with said requirements.

(a) Corner location: Township 37 North  
 Range 08 East  
 Town of Newbold  
 Oneida County, Wisconsin

REGISTER OF DEEDS OFFICE  
 ONEIDA COUNTY, WIS.



Section 06

At \_\_\_\_\_ O'Clock \_\_\_\_\_ M  
**THOMAS H. LEIGHTON**

(b)(f)(g)(h) Description of monument found at this corner and if it was accepted. State all evidence (material, testimonial, occupational, plats, records, other monuments) used as a basis for accepting. If not accepted or if nothing was found, state evidence used as basis for establishing location. If reestablished through lost corner proportionate methods, indicate all monuments, distances and directions used to establish. Indicate type of monument found or set and sign post.

JULY 1863 -WILLIAM E. DAUGHERTY SET ¼ POST COMMON TO SECTIONS 5 & 6 BT'S: TAMARACK 6 N25°E, 11 LINKS AND TAMARACK 12 N85°W, 5 LINKS

PRIOR TO 1908 -MONSELL (POSSIBLE TIMBER CRUISER?) SET POST. REFERENCED IN D.H. VAUGHN'S FIELD BOOK 6.

JANUARY 1908 -D.H. VAUGHN FOUND AND ACCEPTED POST BY MONSELL.

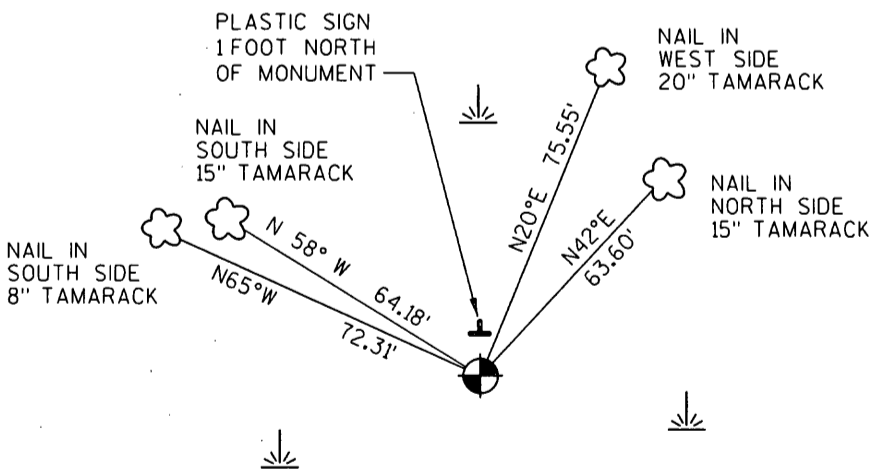
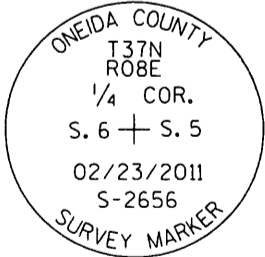
FEBRUARY 1954 -F.R. WINCENTSEN SETS ¼ POST USING VAUGHNS DISTANCE FROM THE WEST ¼ CORNER.  
 BT'S TAMARACK 10 EAST 79 LINKS NO OTHER NEAR.

MARCH 1954 -IVAN BRANHAM SUBDIVIDES SECTION 6, REALIZES A DIFFERENCE IN VAUGHN AND WINCENTSENS LOCATION OF CENTER ¼ AND EAST ¼. BECAUSE OF LACK OF EVIDENCE BY VAUGHN AND "IMPROVED PROP. LINES IN SECTION 8" BRANHAM ACCEPTS WINCENTSENS POSITION.

FEBRUARY 2011 -JEFFREY DEMUTH FINDS WINCENTSEN'S BEARING TREE AT THE EAST ¼ CORNER AND HIS BEARING TREES AT THE CENTER ¼ CORNER. I DID NOT FIND ANY EVIDENCE OF VAUGHNS CORNERS, AND ACCEPTED WINCENTSENS POSITION AS THE BEST AVAILABLE EVIDENCE OF THE TRUE POSITION.

(c)(d)(e) Plan view of corner with ties to at least 4 witness monuments. If in disagreement with previously established corner, show the distances between the two corners and also indicate the ties to the disputed corner.

2" DIAMETER X 6' LONG ONEIDA COUNTY ALUMINUM MONUMENT WITH 3" STAMPED CAP



NORTH

(i) I, Jeffrey L. DeMuth, Registered Land Surveyor #S-2656, hereby certify that the corner location on this record was determined by me or under my direction and control and that this U.S. Public Land Survey Monument Record is correct and complete to the best of my knowledge and belief.

03/24/2011  
 Date



Index No. C-5

3708062000