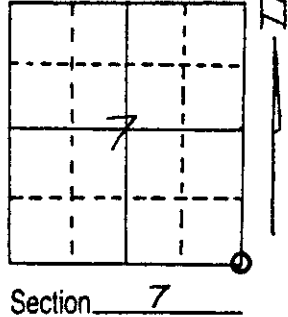
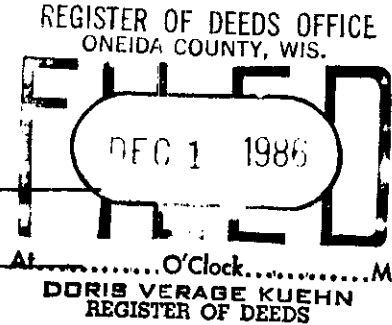


U.S. PUBLIC LAND SURVEY MONUMENT RECORD

Note: This form is intended and designed to fulfill all requirements of Wisconsin Administrative Code, Chapter A-E 5.02, U.S. Public Land Survey Monument Record (3) (a) (b) (c) (d) (e) (f) (g) (h) (i). An additional sheet may be added if necessary to conform with said requirements.

(a) Corner location: Township 37 North
 Range 8 East/West
 Town/City/Village NEW BOLD
 County ONEIDA

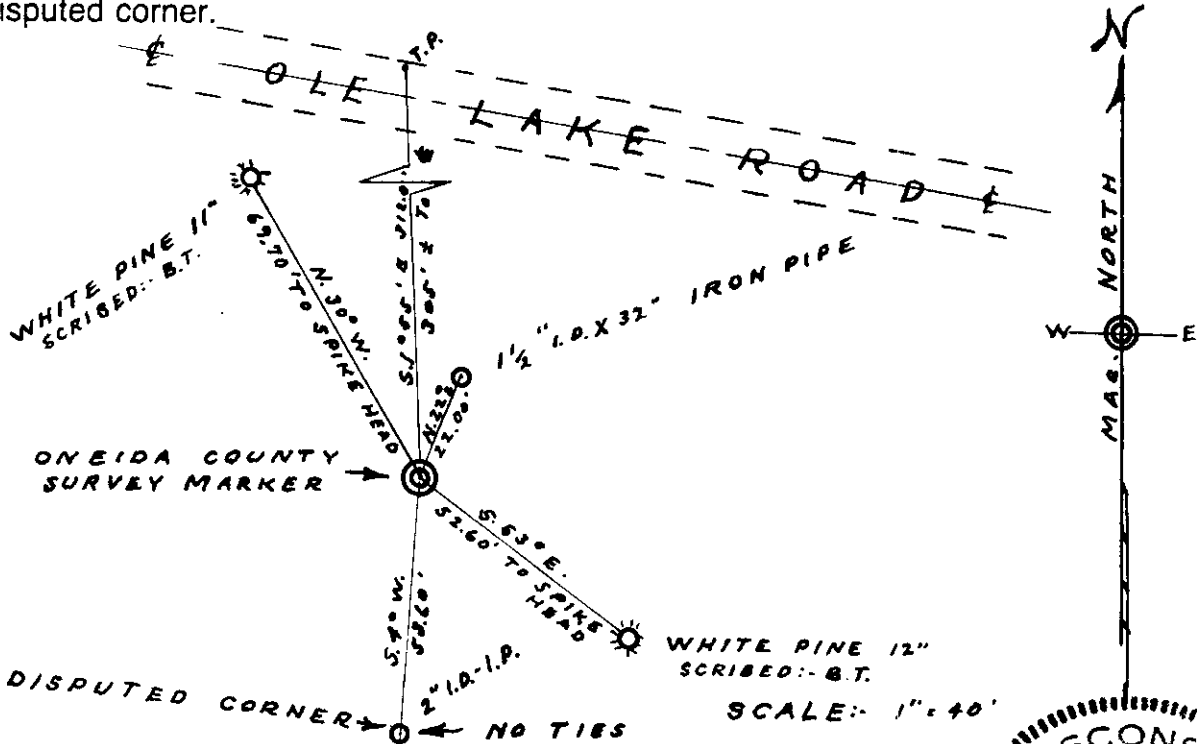


(b) (f) (g) (h) Description of monument found at this corner and if it was accepted, state all evidence (material, testimonial, occupational, plats, records, other monuments) used as a basis for accepting. If not accepted or if nothing was found, state evidence used as basis for establishing location. If reestablished through lost corner proportionate methods, indicate all monuments, distances and directions used to establish.

SAID RESTORED SECTION CORNER, COMMON TO SECTIONS 7-8-17 AND 18, IS IN THE SAME LOCATION AS THAT REFERRED TO BY B. F. DORR IN HIS SURVEY IN NOV. 1890; BY D. H. VAUGHAN IN MAY 1906, AND BY IVAN BRANHAM, HIS SURVEY MAP DATED, NOV. 10, 1953. I USED SAID LOCATION AND WOOD CORNER POST (NO B.T.S), IN MY SURVEY IN THE AREA IN 1951 AND WITH MR. BRANHAM IN 1953. MY NOTES SHOW THAT SAID CORNER WAS 312.0 FT. SOUTH OF MY TURNING POINT ON OLE LAKE ROAD. ALSO THE CASSIAN QUADRANGLE, U.S. GEOLOGICAL SURVEY MAP, OF 1939, SHOWS THAT CORNER FOUND IN PLACE. SAID CORNER BECAME OBLITERATED BETWEEN 1953 AND PRESENT, AS THE WOOD POST ROTTED AWAY, AND AN ERRONEOUS SECTION CORNER WAS SET. ON NOV. 6, 1986, FRANCIS PETTA AND I SEARCHED FOR THE ORIGINAL CORNER, WE FOUND A GROUP OF STONES, BENEATH FOREST LITTER, WITH DETERIORATED YELLOW PAINT ON THEM. CAREFUL DIGGING, OR SCALPING, DISCLOSED ROTTED WOOD, AND A PORTION OF THE POINT OF POST, VISIBLY SHOWING THE VERTICAL DIRECTION OF THE GRAIN OF THE WOOD.

THE ABOVE EVIDENCE, LEAVES NO DOUBT IN MY MIND, THAT WE HAVE DETERMINED THE LOCATION OF THE ORIGINAL SECTION CORNER AS IT COINCIDES WITH MY FIELD WORK OF 1951, AND CLOSELY TO THAT OF PREVIOUSLY NAMED SURVEYORS.

(c) (d) (e) Plan view of corner with ties to at least 4 witness monuments. If in disagreement with previously established corner, show the distances between the two corners and also indicate the ties to the disputed corner.



(i) I, SY. M. POSKIE
 (type or print name) certify that the corner location on this record was determined by me or under my direction and control and that this U.S. Public Land Survey Monument Record is correct and complete to the best of my knowledge and belief.



Sy. M. Poskie 12-18-1986
 Signature WIS. NO. S.00140 Date

Index No. 5

3708070000

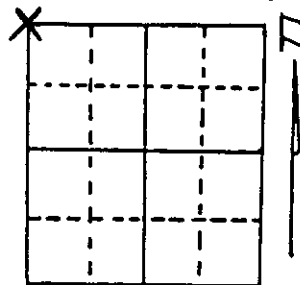
U.S. PUBLIC LAND SURVEY MONUMENT RECORD

Note: This form is intended and designed to fulfill all requirements of Wisconsin Administrative Code, Chapter A-E 7.08 U.S. Public Land Survey Monument Record (3) (a) (b) (c) (d) (e) (f) (g) (h) (i). An additional sheet may be added if necessary to conform with said requirements.

(a) Corner location: Township 37 North
 Range 8 East/West

Town/City/Village Newbold

County Oneida



Section 21

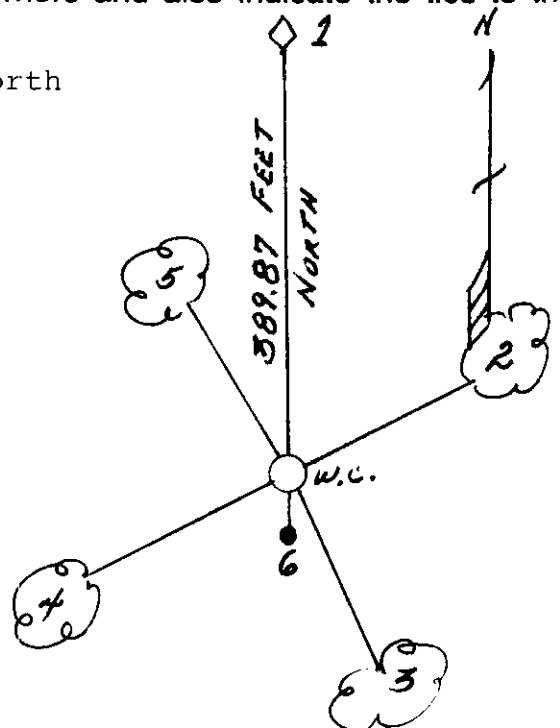
(b) (f) (g) (h) Description of monument found at this corner and if it was accepted, state all evidence (material, testimonial, occupational, plats, records, other monuments) used as a basis for accepting. If not accepted or if nothing was found, state evidence used as basis for establishing location. If reestablished through lost corner proportionate methods, indicate all monuments, distances and directions used to establish.

July 1863, Wm. E. Daugherty set post for section corner - 16, 17, 20 & 21:
 10" Tamarack, S37°E, 17 Links (11.22')
 10" Tamarack, N48°W, 11 Links (7.26')
 September 28, 1954 F. R. Wincentsen found Vaughn's BTs and squared post in place.
 March 24, 1988 Milo E. Stefan found post in beaver pond with two dead BTs - area flooded:
 6" Elm, S5°W, 73.5'
 5" Tamarack, S39°W, 55.6'
 As area is flooded I decided to preserve the position by establishment of a witness corner south on the section line 389.87 feet.

(c) (d) (e) Plan view of corner with ties to at least 4 witness monuments. If in disagreement with previously established corner, show the distances between the two corners and also indicate the ties to the disputed corner.

1. Corner is marked by a post 389.87 feet north along the section line. Witness corner marked by an Oneida County monument.
2. 8" White Birch, N70°E, 31.96 Feet (WC BT)
3. 14" Red Maple, S31°E, 31.14 Feet (WC BT)
4. 6" Red Maple, S72°W, 10.25 Feet (WC BT)
5. 8" Red Maple, N36°W, 20.67 Feet (WC BT)
6. Plastic sign post, south, 1.5 Feet

(Trees scribed accordingly)
 Distances to nail in side of trees.



(i) I, Milo E. Stefan
 (type or print name) certify that the corner location on this record was determined by me or under my direction and control and that this U.S. Public Land Survey Monument Record is correct and complete to the best of my knowledge and belief.

Milo E. Stefan
 Signature

May 17, 1988
 Date



Index No. N-9

370817000