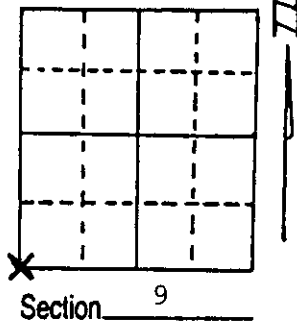


U.S. PUBLIC LAND SURVEY MONUMENT RECORD

Note: This form is intended and designed to fulfill all requirements of Wisconsin Administrative Code, Chapter A-E 7.08 U.S. Public Land Survey Monument Record (3) (a) (b) (c) (d) (e) (f) (g) (h) (i). An additional sheet may be added if necessary to conform with said requirements.

(a) Corner location: Township 37 North
 Range 8 East ~~West~~

Town/City/Village Newbold
 County Oneida



(b) (f) (g) (h) Description of monument found at this corner and if it was accepted, state all evidence (material, testimonial, occupational, plats, records, other monuments) used as a basis for accepting. If not accepted or if nothing was found, state evidence used as basis for establishing location. If reestablished through lost corner proportionate methods, indicate all monuments, distances and directions used to establish.

July 1863, Wm. E. Daugherty set post for section corner 8, 9, 16 and 17:
 10" Red Pine, S1°E, 5 Links (3.30')

9" Red Pine, N34°W, 17 Links (11.22')

10/1916 - Railroad center line, west 281 Feet.

8/23/1949 - F.R. Wincentzen found post 6" x 6" and A.J. Lytle's BT - OK.

1958 - Highway survey tied to corner, book LL115, page 195.

5/4/88 - Milo E. Stefan found 1" iron pipe below driveway with two scribed BTs:

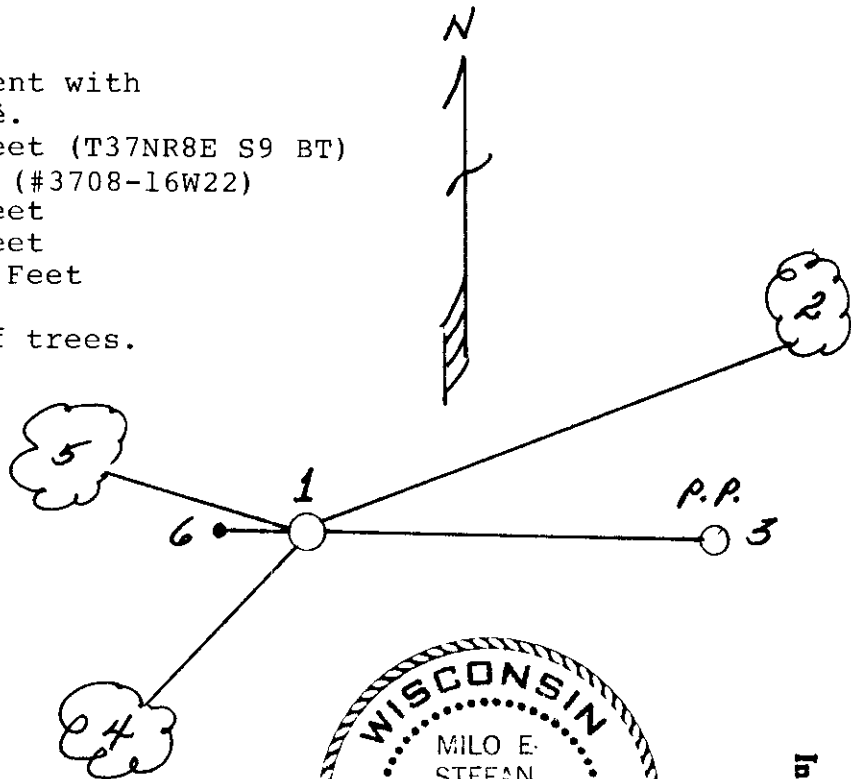
14" Red Pine, S50°W, 17.90'

18" Red Pine, N78°W, 13.10'

I accept this I.P. as the perpetuated position of the section corner and placed an aluminum county monument 6" below driveway surface with I.P. along side.

(c) (d) (e) Plan view of corner with ties to at least 4 witness monuments. If in disagreement with previously established corner, show the distances between the two corners and also indicate the ties to the disputed corner.

1. Oneida County Aluminum monument with 1" iron pipe 6" below surface.
2. 5" Red Pine, N74°E, 147.10 Feet (T37NR8E S9 BT)
3. Power pole, east, 98.91 Feet (#3708-16W22)
4. 14" Red Pine, S50°W, 17.90 Feet
5. 18" Red Pine, N78°W, 13.10 Feet
6. Plastic sign post, west 10.0 Feet (Scribed accordingly)
 Distances to nail in side of trees.



(i) I, Milo E. Stefan
 (type or print name) certify that the corner location on this record was determined by me or under my direction and control and that this U.S. Public Land Survey Monument Record is correct and complete to the best of my knowledge and belief.

Milo E. Stefan Signature
 May 12, 1988 Date



Index No. J-9

3708080000