

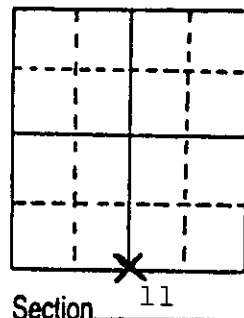
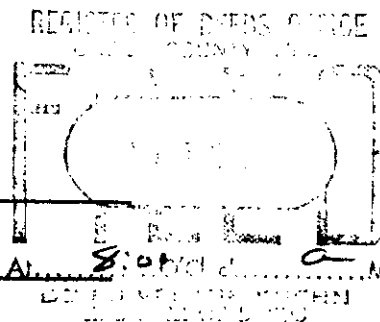
U.S. PUBLIC LAND SURVEY MONUMENT RECORD

Note: This form is intended and designed to fulfill all requirements of Wisconsin Administrative Code, Chapter A-E 5.02, U.S. Public Land Survey Monument Record (3) (a) (b) (c) (d) (e) (f) (g) (h) (i). An additional sheet may be added if necessary to conform with said requirements.

(a) Corner location: Township 37 North
Range 8 East/West

Town/City/Village Pine Lake

County Oneida



(b) (f) (g) (h) Description of monument found at this corner and if it was accepted, state all evidence (material, testimonial, occupational, plats, records, other monuments) used as a basis for accepting. If not accepted or if nothing was found, state evidence used as basis for establishing location. If reestablished through lost corner proportionate methods, indicate all monuments, distances and directions used to establish.

July 1860, Wm. E. Daugherty at 39.83 chains set post for 1/4 section corner:

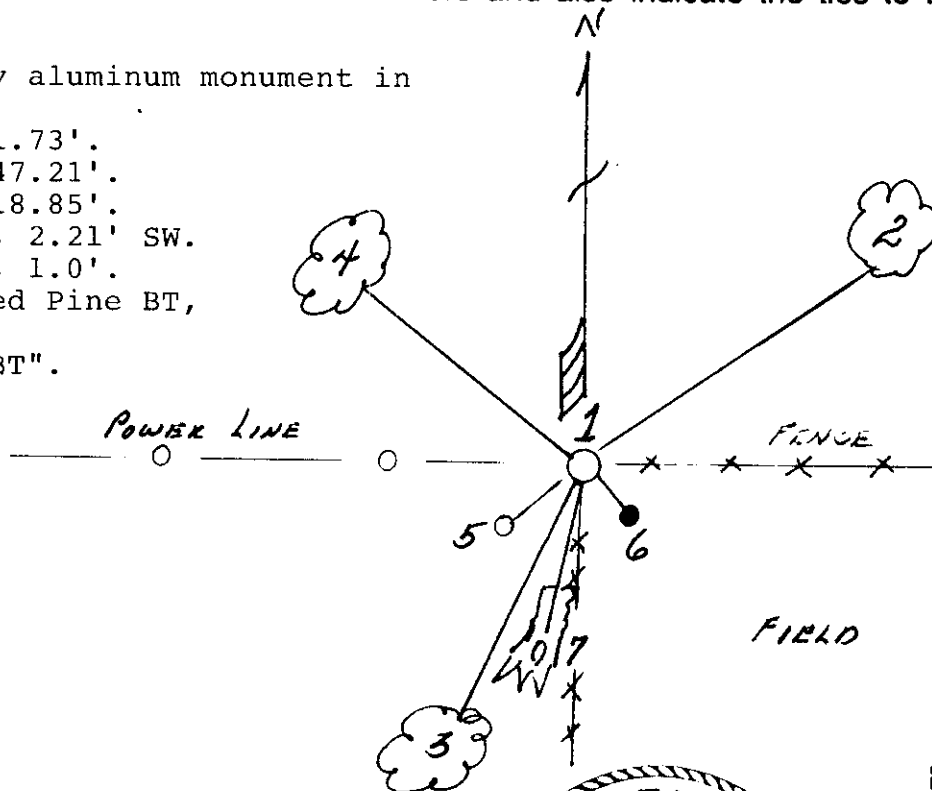
- 1) 12" Jack Pine, N7°E, 32 links (21.12')
- 2) 15" Red Pine, S11°W, 11 links (7.26')

December 9, 1987, Milo E. Stefan found:

- 1) 1" x 36" iron pipe flush with ground at fence corner, with old fence east and south, power line west.
- 2) Iron pipe supported by remains of original SW Red Pine BT, a 6' snag with bits of scribing visible.
- 3) NE, BT lies in old cultivated field that is now a 15 - 20 year old Red Pine plantation.

(c) (d) (e) Plan view of corner with ties to at least 4 witness monuments. If in disagreement with previously established corner, show the distances between the two corners and also indicate the ties to the disputed corner.

1. 2" x 30" Oneida County aluminum monument in mound of stone.
2. 6" Red Pine, N42°E, 31.73'.
3. 6" Jack Pine, S31°W, 47.21'.
4. 7" Jack Pine, N52°W, 18.85'.
5. Power pole #3708-14E5, 2.21' SW.
6. Plastic sign post, SE, 1.0'.
7. 6' snag of original Red Pine BT, S11°W, 7.26'.
BT's scribed "1/4S BT".



(i) I, Milo E. Stefan

(type or print name) certify that the corner location on this record was determined by me or under my direction and control and that this U.S. Public Land Survey Monument Record is correct and complete to the best of my knowledge and belief.

Milo E Stefan
Signature

1/4/88
Date



Index No. J-19

3708110020