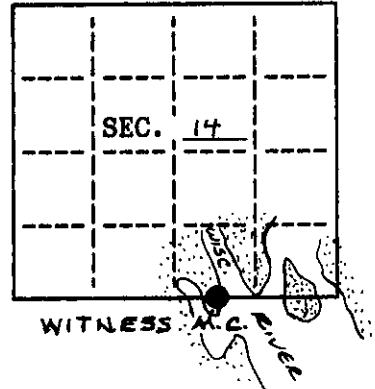


**U.S. PUBLIC LAND SURVEY MONUMENT RECORD**

Note: This form is intended and designed to fulfill all requirements of Wisconsin Administrative Code, Chapter X-E 7.08 U.S. Public Land Survey Monument Record (a)(b)(c)(d)(e)(f)(g)(h)(i). An additional sheet may be added if necessary to conform with said requirements.

(a) CORNER LOCATION: State Plane Coordinates  
 MEANDER corner of Sec. 14 X \_\_\_\_\_  
 Township 37 North Y \_\_\_\_\_  
 Range 8 East Datum Base \_\_\_\_\_  
 Town/City NEWBOLD County of ONEIDA

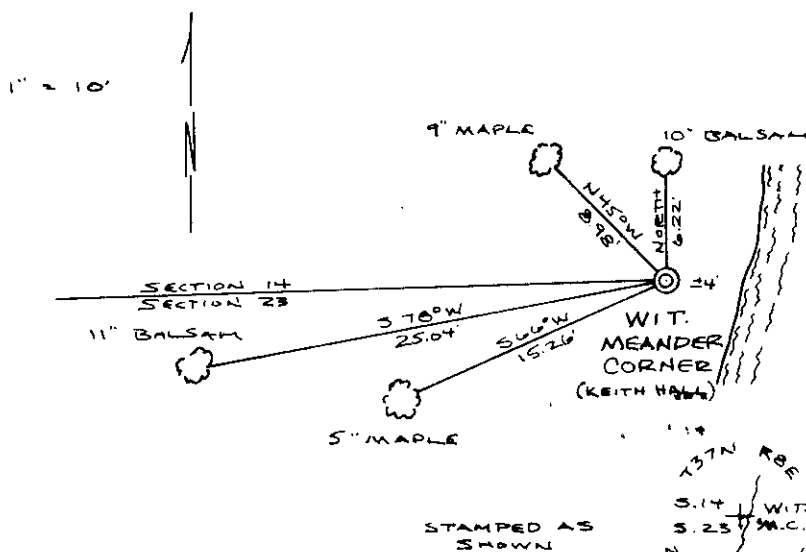


(b) HISTORY OF ORIGINAL CORNER ESTABLISHMENT  
 Original Surveyor: WILLIAM E. DAUGHERTY Original B.T.'S  
 Date of Survey: Commenced JULY 17, 1863 N/A  
 Completed JULY 29, 1863

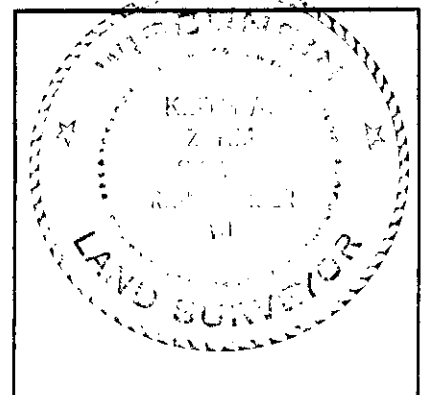
(b)(f)(g)(h) Description of monument found at this corner and if it was accepted, state all evidence (material, testimonial, occupational, plats, records, other monuments) used as a basis for accepting. If not accepted or if nothing was found, state evidence used as basis for establishing location. If reestablished through lost corner proportionate methods, indicate all monuments, distances and directions used to establish. Indicate type of monument and sign post found or set.

- JULY, 1863 - WM. DAUGHERTY RAN LINE COMMON TO SECTIONS 14 & 23. HE SET MEANDER POST ON RIGHT BANK OF RIVER AT 27.00 CH. WEST OF SE COR S.14, 53.00 CH EAST OF SW COR S.14.
- APRIL (7), 1902 - D.H. VAUGHN RAN NORTH LINE OF S23; HE DOES NOT MENTION FINDING 1/4 CORNER. FROM HIS NOTES, HE "WENT TO WEST BANK OF RIVER & SET MEANDER WHICH IS 52.65 E. OF NW CORNER AND IS 3.25 WEST OF ORG. BANK OF RIVER AND ON LINE BETWEEN SEC. CORNERS." HE MAKES TWO B.T.'S - B.PINE 7, N11 1/2 E, 46 1/2; B.PINE 7, S52 W, 12 1/2.
- ± 1950 - KEITH M. HALL STATES ON HIS MAP (L108 AS FILED W/ONEIDA CO. SURVEYOR) "RAN EAST FROM NORTH 1/4 CORNER, SET MEANDER POST ON BANK OF WISCONSIN RIVER" (CONTINUED ON REVERSE)

(c)(d)(e) Plan view of corner with ties to at least 4 witness monuments. If in disagreement with previously established corner, show the distances between the two corners and also indicate the ties to the disputed.



REPLACED ANGLE IRON FENCE POST WITH AN ONEIDA CO. ALUM. MONUMENT.  
 SET WHITE CARBONITE POST ± 1' EAST.  
 MEASURED TO 60d NAILS SET IN SIDES OF EACH B.T.  
 BEARINGS TAKEN WITH HAND-HELD COMPASS



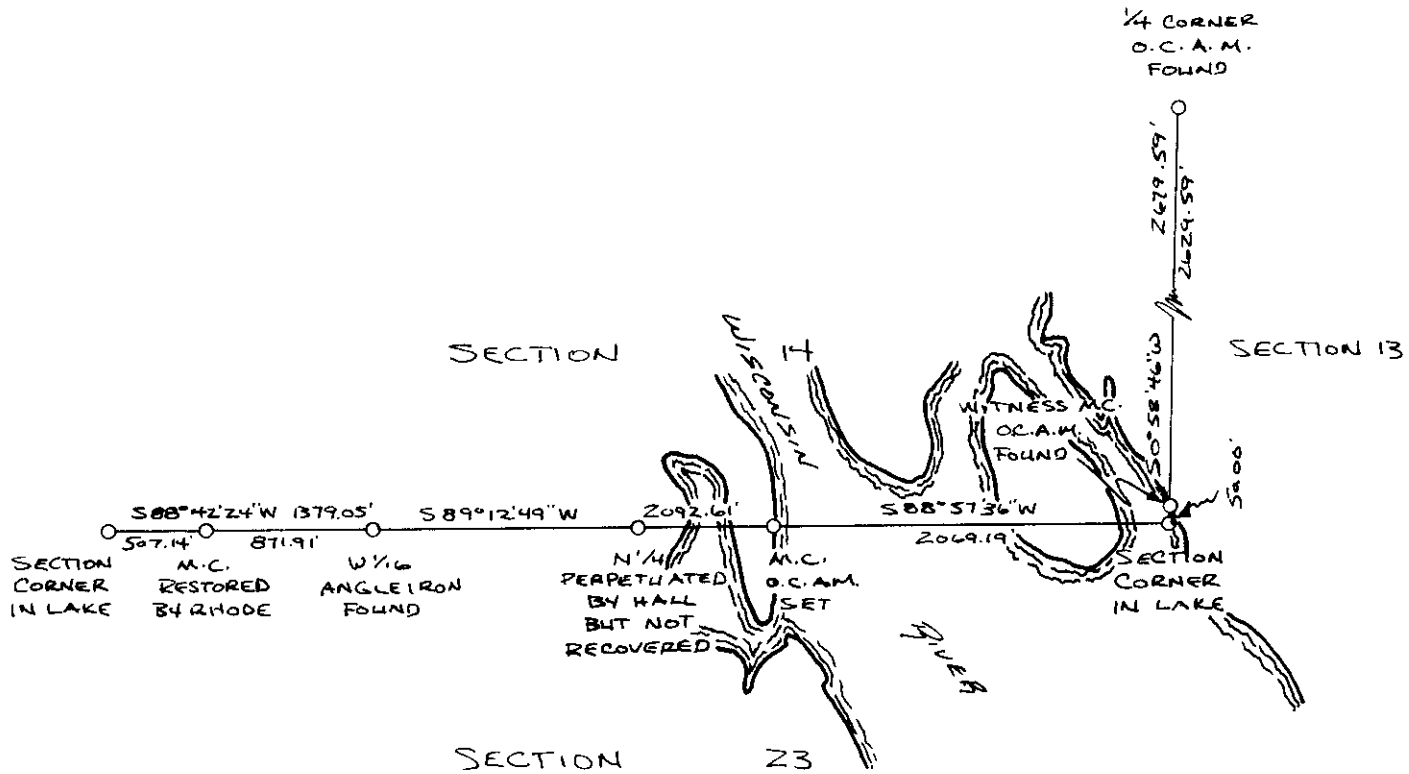
(i) I, KEITH A. ZARM R.L.S. - 2425 hereby certify that the corner location on this record was determined by me or under my direction and control and that this U.S. Public Land Survey Monument Record is correct and complete to the best of my knowledge and belief.

Signature \_\_\_\_\_ Date 28 JUL 02

3708140014

INDEX NO. N 19-20

MAY 29, 2002 - WHILE SURVEYING IN SECTIONS 14 & 23 I FOUND AN ANGLE IRON FENCE POST SIMILAR TO OTHER CORNERS FOUND IN SECTION 23 WHICH ARE KNOWN TO BE SET BY HALL WHEN HE SUBDIVIDED SAME. THOUGH NOT PART OF THE ORIGINAL SURVEY AND AS IT FITS RELATIVELY WELL ON THE SECTION LINE, I ACCEPT IT AS HALLS MEANDER CORNER. I REPLACED THE ANGLE IRON WITH AN ONEIDA Co. ALUM. MONUMENT AND WITNESSED IT AS SHOWN ON REVERSE.



REGISTER OF DEEDS OFFICE  
 ONEIDA COUNTY, WIS.  
 JUN 30 2002  
 A: O'Clock M  
 THOMAS H. LEIGHTON  
 REGISTER OF DEEDS