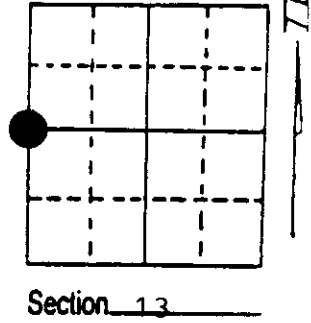


# U.S. PUBLIC LAND SURVEY MONUMENT RECORD

Note: This form is intended and designed to fulfill all requirements of Wisconsin Administrative Code, Chapter A-E 7.08 U.S. Public Land Survey Monument Record (3) (a) (b) (c) (d) (e) (f) (g) (h) (i). An additional sheet may be added if necessary to conform with said requirements.

(a) Corner location: Township 37 North  
 Range 8 East

Town/City/Village Pine Lake  
 County Oneida



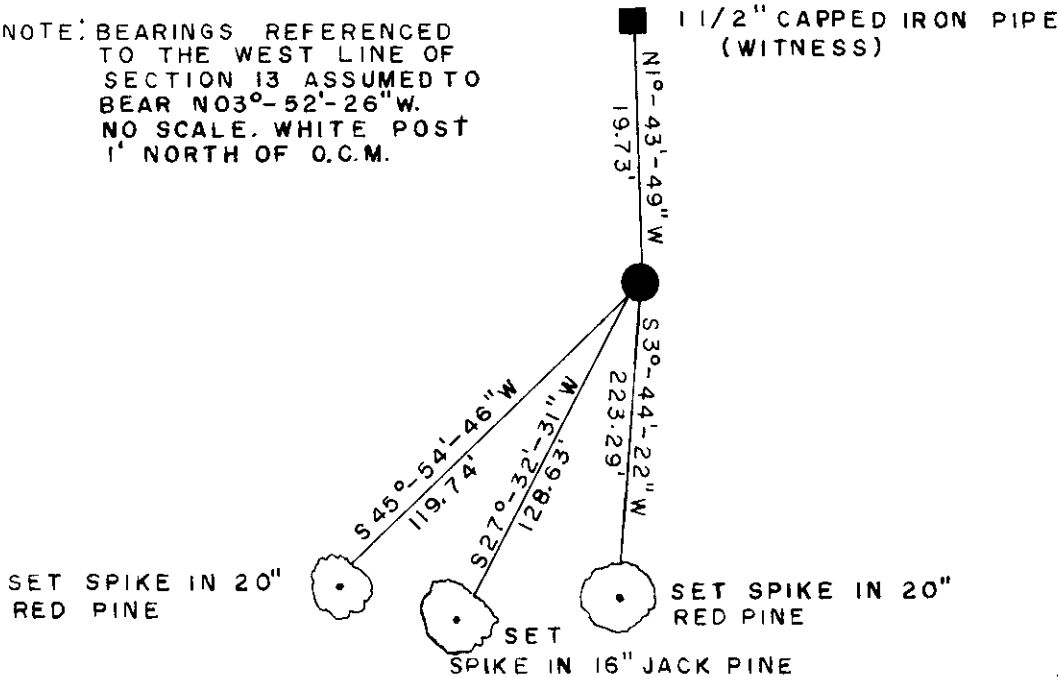
(b) (f) (g) (h) Description of monument found at this corner and if it was accepted, state all evidence (material, testimonial, occupational, plats, records, other monuments) used as a basis for accepting. If not accepted or if nothing was found, state evidence used as basis for establishing location. If reestablished through lost corner proportionate methods, indicate all monuments, distances and directions used to establish. Indicate type of monument found or set and sign post.

1863- Daugherty set post 8" Tamrack S 54° E 22 links  
 10" Tamrack N 49½° W 14 links  
 1904-Vaughan at corner found original B.T.s were gone  
 1965-Ripco found iron bolt in the intersection of the town roads  
 set a 2" reference pipe 30 chains North of W¼ corner bolt  
 1993-William E. Bandow found iron bolt and witness corner  
 replaced iron bolt with Oneida County Monument and witnessed below

(c) (d) (e) Plan view of corner with ties to at least 4 witness monuments. If in disagreement with previously established corner, show the distances between the two corners and also indicate the ties to the disputed corner.



NOTE: BEARINGS REFERENCED TO THE WEST LINE OF SECTION 13 ASSUMED TO BEAR N03°-52'-26" W. NO SCALE. WHITE POST 1' NORTH OF O.C.M.



(i) I, William E. Bandow  
 (type or print name) certify that the corner location on this record was determined by me or under my direction and control and that this U.S. Public Land Survey Monument Record is correct and complete to the best of my knowledge and belief.

William E. Bandow 12-29-93  
 Signature Date



Index No. 1-21

Stamp  
 3708147000