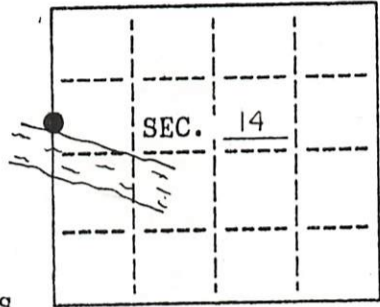


U.S. PUBLIC LAND SURVEY MONUMENT RECORD

Note: This form is intended and designed to fulfill all requirements of Wisconsin Administrative Code, Chapter X-7.08 U.S. Public Land Survey Monument Record (3)(a)(b)(c)(d)(e)(f)(g)(h)(i). An additional sheet may be added if necessary to conform with said requirements.

(a) CORNER LOCATION: State Plane Coordinates
 W.C.M.C. corner of Sec. 14-15 X _____
 Township 37 North Y _____
 Range 8 East Datum Base _____
 Town/City PINE LAKE County of _____

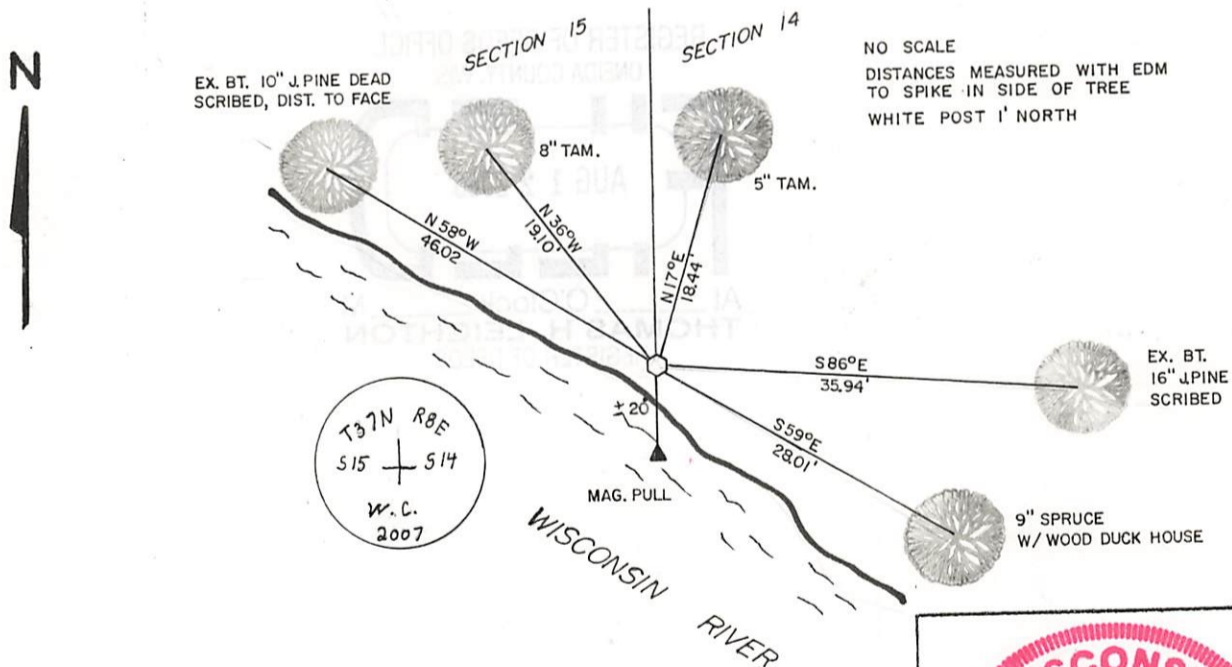


(b) HISTORY OF ORIGINAL CORNER ESTABLISHMENT
 Original Surveyor: WILLIAM DAUGHERTY Original B.T.'S
 Date of Survey: Commenced JULY 17 1863 TAM. 8" N4°E 310
 Completed JULY 29 1863 NO OTHERS NEAR

(b)(f)(g)(h) Description of monument found at this corner and if it was accepted, state all evidence (material, testimonial, occupational, plats, records, other monuments) used as a basis for accepting. If not accepted or if nothing was found, state evidence used as basis for establishing location. If reestablished through lost corner proportionate methods, indicate all monuments, distances and directions used to establish. Indicate type of monument and sign post found or set.

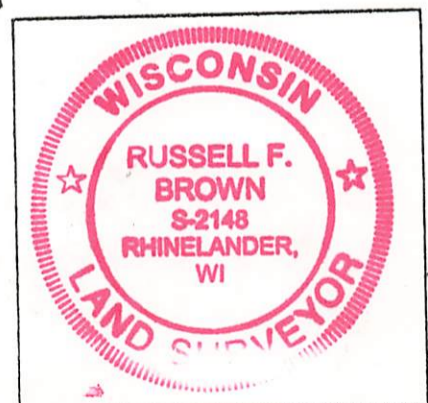
3-29-1963 ROBERT E. BANDOW AT N1/16. RAN SOUTH 4+51.6 TO M.C. IP J.PINE 8" N45°W 55.1 J.PINE 12" N 75°E 37.68'
 1-19-2007 I FOUND R.E.B. TWO J.PINE BT'S, PULLED TIES AND GOT MAGNETIC PULL UNDER ICE. SET STANDARD ONEIDA COUNTY MONUMENT ON SECTION LINE ± 15' FROM SHORELINE AND MADE NEW BT'S SHOWN BELOW. MONUMENT SET IS A WITNESS TO R.E.B'S M.C; ORIGINAL GOVERNMENT M.C WAS SET 2119.92' SOUTH OF NW CORNER SECTION 14 AS PER FIELD NOTES, (AREA NOW FLOODED.) OR 353.59' SOUTH OF MY WITNESS.

(c)(d)(e) Plan view of corner with ties to at least 4 witness monuments. If in disagreement with previously established corner, show the distances between the two corners and also indicate the ties to the disputed.



(i) I, RUSSELL F. BROWN hereby certify that the corner location on this record was determined by me or under my direction and control and that this U.S. Public Land Survey Monument Record is correct and complete to the best of my knowledge and belief.

Russell F. Brown 8/16/07
 Signature Date



INDEX NO. R/L-17

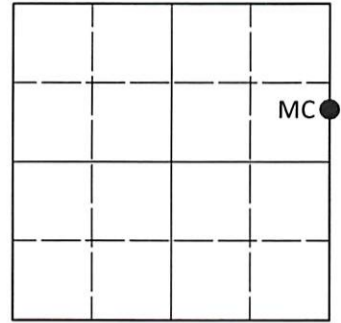
3807152700
 3708

U.S. PUBLIC LAND SURVEY MONUMENT RECORD

Note: This form is intended and designed to fulfill all requirements of Wisconsin Administrative Code, Chapter A-E 7.08 U.S. Public Land Survey Monument Record (3)(a-i).

(a) CORNER LOCATION
 Meander Cor. of Secs. 14 & 15
 Township 37 North
 Range 8 East of the 4th P.M.
 Town of Pine Lake
 County of Oneida

WISCRS - Oneida County
 N: 186,993.46 USft
 E: 248,783.74 USft
 Datum: NAD 83(2011) ep. 2010.00
 GNSS Method: RTN - Direct
 GNSS Control: WISCORS VRS



Sec. 15, T. 37 N., R. 8 E.

(b)(f)(g)(h) Description of monument found at this corner and if it was accepted, state all evidence (material, testimonial, occupational, plats, records, other monuments) used as a basis for accepting. If not accepted or if nothing was found, state evidence used as basis for establishing location. If re-established through lost corner proportionate methods, indicate all monuments, distances and directions used to establish. Indicate type of monument and sign post found or set.

This record is a perpetuation of the following land corner document(s):

August 16, 2007: USPLS Monument Record by Russell F. Brown, filed in Oneida County

A complete history of the corner can be found on the previous land corner document(s).

December 2, 1999: Certified Survey Map no. 2321 by Devon Vanden Heuvel identifies corner as 3/4" x 24" iron rod set by undisclosed methods.

June 24, 2023: I found the record monument, a 2.4" diam. aluminum pipe, firmly set, with a 3.3" diam. Oneida Co. aluminum cap projecting 2" above the bog surface. I found or established accessories as indicated below. I found a white vinyl sign post bearing North, 0.6 ft. I also found what I believe to be the Meander Corner described on Certified Survey Map no. 2321 as shown below.

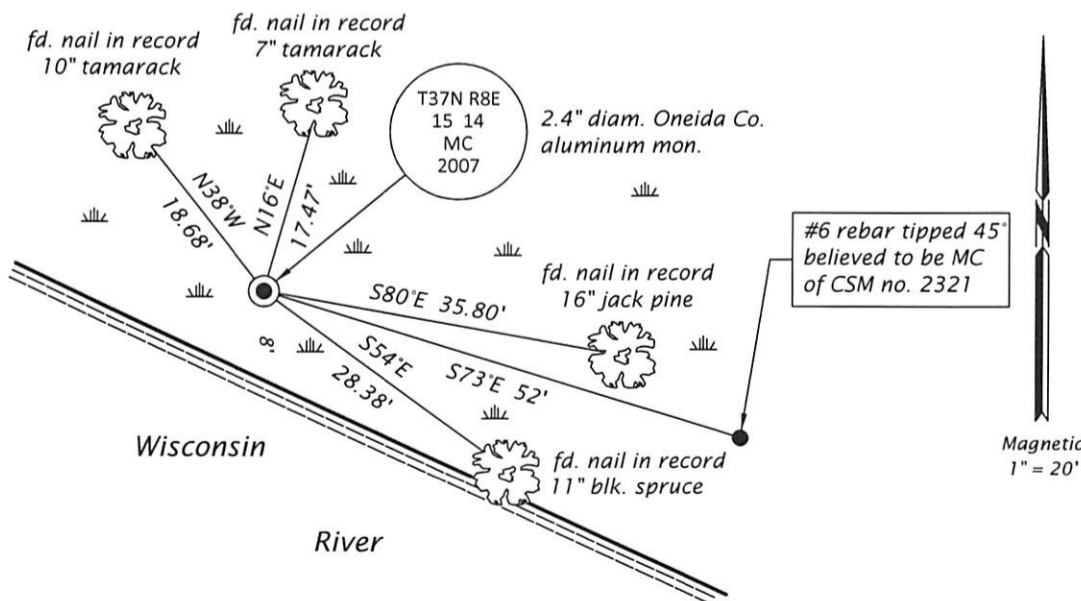
The coordinate value shown is the weighted mean of two or more GNSS observations at markedly different times satisfying the accuracy requirements defined and qualified in the 2022 Oneida County Fee Schedule for USPLS Corners.

REGISTER OF DEEDS OFFICE
ONEIDA COUNTY
FILED

JUL 06 2023

KYLE J. FRANSON
REGISTER OF DEEDS

(c)(d)(e) Plan view of corner with ties to at least 4 witness monuments. If in disagreement with previously established corner, show the distances between the two corners and also indicate the ties to the disputed.



(i) I, Jeffrey W. Austin, Professional Land Surveyor No. S-1885, hereby certify that the corner location on this record was determined by me or under my direction and control and that this U.S. Public Land Survey Monument Record is correct and complete to the best of my knowledge and belief.

[Handwritten Signature]
 Signature

JULY 1, 2023
 Date