

CERTIFIED LAND CORNER RESTORATION

State of Wisconsin }
County of Oneida } ss.

I, James D. Wein, do hereby certify that on the 26th day of March, 1979, I found evidence of the Northeast corner of Section 19 Township 37 North Range 8 East, Fourth Principal Meridian, as described hereon; and that from this evidence I established ~~a new monument~~ accessories as described hereon to perpetuate the original location of this corner:

Description of original monument and accessories and subsequent restorations:

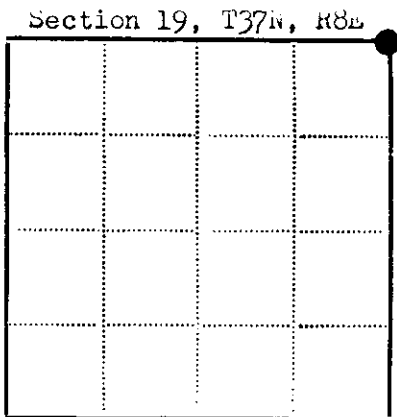
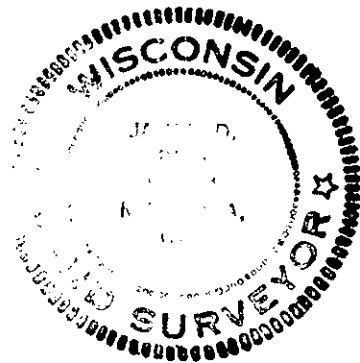
wood post set by William E. Dougherty, Deputy Surveyor on July 29th, 1863, witnessed by the following bearing trees: 8" Aspen S22°W, 27 lks (17.82 feet) and by an 8" Birch N1°W, 33 links (21.78 feet)
post set by D. H. Vaughn, Oneida County surveyor on October 3rd, 1905 from "sufficient evidence".
post found by F. C. Vincentsen, Oneida County Surveyor February 15th, 1951, witnessed by a 6" Norway Pine N62°W, 49 links (32.34 feet) and by a 7" Aspen S63°E, 19.5 links (12.87 feet)

Description of corner evidence found:

2" diameter iron pipe up three (3) feet, witnessed by a 14" Norway Pine N66°W, 32.01 feet (Vincentsen)

Description of ~~monument and~~ accessories I established to perpetuate the location of this corner:

made ties to witness the existing iron pipe.
Set P.K. nail in existing bearing tree 14" Norway Pine N66°W, 32.01 feet
made bearing trees with P.K. nails set in the lower blaze as follows:
7" Soft Maple S78°W, 19.79 feet
8" Oak S8°E, 24.13 feet



● - Corner monument restored
□ -

Resident witnesses none

Dated at Minocqua, Wisconsin, this 10th day of September, 1979.

Signature James D. Wein Title Reg. Land Surveyor
(County Surveyor, Registered Land Surveyor, or other duly authorized official)

Surveyors Registration No. 5-1234

Office of REGISTER OF DEEDS County of Oneida

I hereby certify that the within instrument was filed in this office for record on the 17th day of September, 1972, and was filed in Book No. Page No. of County Records.

Signature Lois Verage Kuehn Title REGISTER OF DEEDS

Township, Range, Section, Index No., Page No.

3708/80000

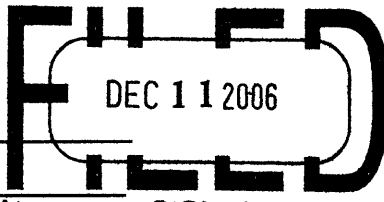
N.S

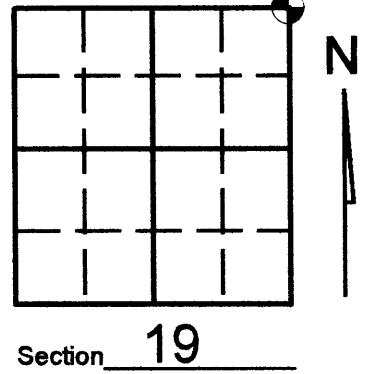
U.S. PUBLIC LAND SURVEY MONUMENT RECORD

Note: This form is intended and designed to fulfill all requirements of Wisconsin Administrative Code, Chapter A-E 7.08 U.S. Public Land Survey Monument Record (3)(a)(b)(c)(d)(e)(f)(g)(h)(i). An additional sheet may be added if necessary to conform with said requirements.

(a) Corner location: Township 37 North
 Range 08 (Eas)/West

Town/City/Village NEWBOLD
 County ONEIDA

REGISTER OF DEEDS OFFICE
 ONEIDA COUNTY, WIS.

 At _____ O'Clock _____ M
THOMAS H. LEIGHTON
 REGISTER OF DEEDS

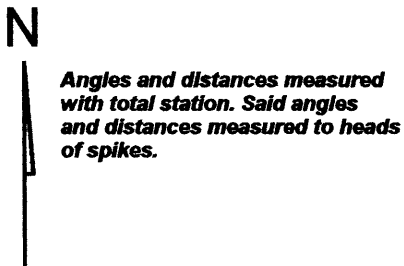


(b) (f) (g) (h) Description of monument found at this corner and if it was accepted, state all evidence (material, testimonial, occupational, plats, records, other monuments) used as a basis for accepting. If not accepted or if nothing was found, state evidence used as basis for establishing location. If reestablished through lost corner proportionate methods, indicate all monuments, distances and directions used to establish. Indicate type of monument found or set and sign post.

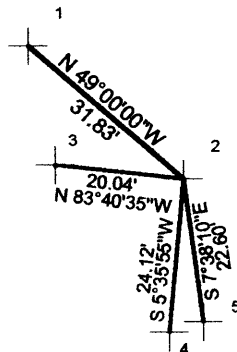
See corner form N-5 for history on corner

December 2006, Kevin Bixby found Oneida County Monument and witnessed said monument as shown below.

(c) (d) (e) Plan view of corner with ties to at least 4 witness monuments. If in disagreement with previously established corner, show the distances between the two corners and also indicate the ties to the disputed corner.



Angles and distances measured with total station. Said angles and distances measured to heads of spikes.



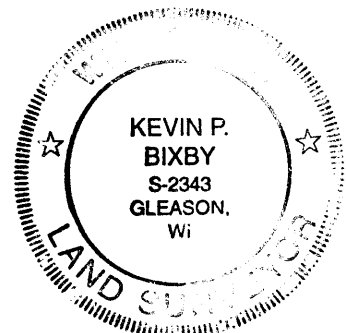
SCALE: 1"=30'

LEGEND

- 1 = SET SPIKE IN 18" RED PINE (EXISTING B.T.)
- 2 = EXISTING O.C.M.
- 3 = SET SPIKE IN 10" MAPLE (EXISTING B.T.)
- 4 = SET SPIKE IN 12" OAK (EXISTING B.T.)
- 5 = SET SPIKE IN 8" OAK (NEW B.T.)

(i) I, KEVIN P. BIXBY

(type or print name) certify that the corner location on this record was determined by me or under my direction and control and that this U.S. Public Land Survey Monument Record is correct and complete to the best of my knowledge and belief.



Index No. N-5

Kevin P. Bixby
 Signature

12/08/06
 Date

Stamp

3708180000