

U.S. PUBLIC LAND SURVEY MONUMENT RECORD

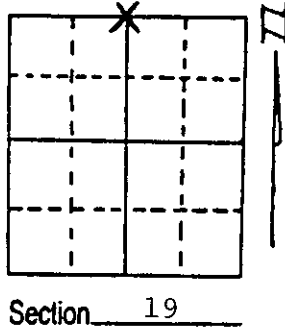
Note: This form is intended and designed to fulfill all requirements of Wisconsin Administrative Code, Chapter A-E 7.08 U.S. Public Land Survey Monument Record (3) (a) (b) (c) (d) (e) (f) (g) (h) (i). An additional sheet may be added if necessary to conform with said requirements.

(a) Corner location: Township 37 North

Range 8 East/West

Town/City/Village Newbold

County Oneida



(b) (f) (g) (h) Description of monument found at this corner and if it was accepted, state all evidence (material, testimonial, occupational, plats, records, other monuments) used as a basis for accepting. If not accepted or if nothing was found, state evidence used as basis for establishing location. If reestablished through lost corner proportionate methods, indicate all monuments, distances and directions used to establish.

July 1863, Wm. E. Daugherty set post for 1/4 corner to sections 18 & 19:

7" White Pine, S29°E, 2 Links (1.32')

7" Aspen, N35°W, 15 Links (9.90')

February 15, 1951 F.R. Wincentzen restored corner by lost methods.

Set W.C. 15 links north of corner and two BTs:

7" Oak, S52°E, 24.5 Links (16.20')

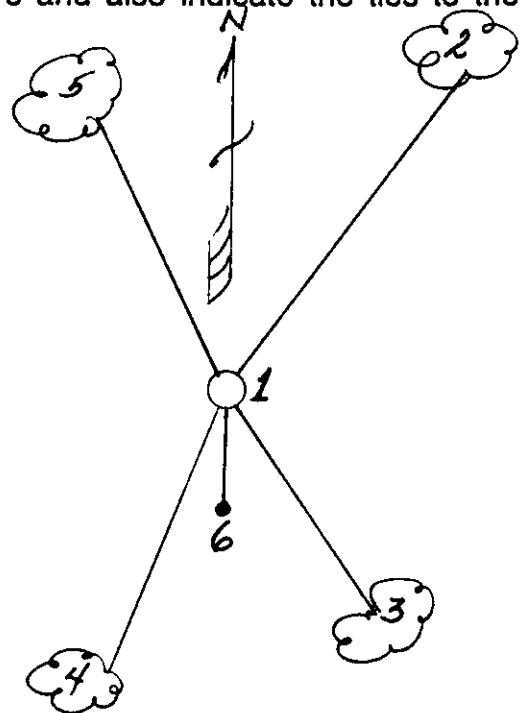
8" Oak, N3°E, 37.5 Links (24.75')

May 17, 1988 Milo E. Stefan ran traverse from section corners east and west and at single proportionate position found all evidence of this corner to be destroyed by road construction. A blaze and painted red tree bears due north of our restored position. See distances on sketch on reverse of this form.

(c) (d) (e) Plan view of corner with ties to at least 4 witness monuments. If in disagreement with previously established corner, show the distances between the two corners and also indicate the ties to the disputed corner.

1. Oneida County aluminum monument
10" below road surface with stone atop (6" x 6" x 6")
2. 16" Red Pine, N26°E, 117.28 Feet (1/4S BT)
3. 8" Red Pine, S36°E, 37.64 Feet (1/4S BT)
4. 10" Red Oak, S19°W, 36.39 Feet (1/4S BT)
5. 10" Red Oak, N23°W, 49.10 Feet (1/4S BT)
6. Plastic sign post, south, 15.0 Feet

(Trees scribed accordingly)
Distances to nail in side of trees.

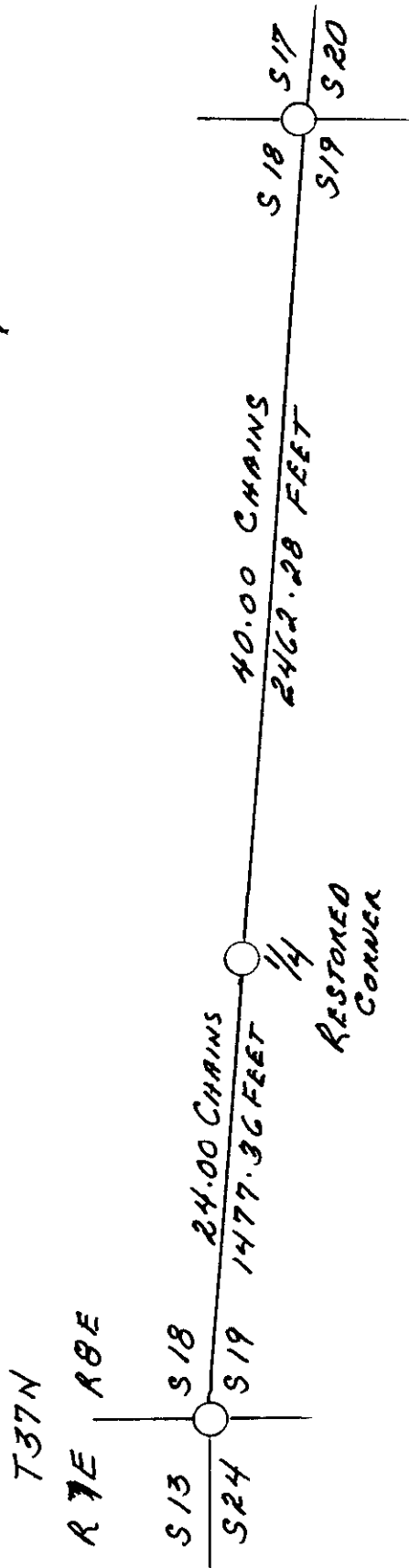
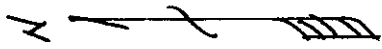


(i) I, Milo E. Stefan
(type or print name) certify that the corner location on this record was determined by me or under my direction and control and that this U.S. Public Land Survey Monument Record is correct and complete to the best of my knowledge and belief.

Milo E. Stefan
Signature

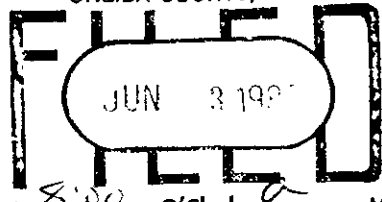
May 17, 1988
Date





ORIGINAL GLO SURVEY IN CHAINS.
RECENT MEASURE IN FEET.

REGISTER OF DEEDS OFFICE
ONEIDA COUNTY, WIS.



At 8:00 O'clock M
DORIS VERAGE KUEHN
REGISTER OF DEEDS