

Stock No. 26273

U. S. PUBLIC LAND SURVEY MONUMENT RECORD

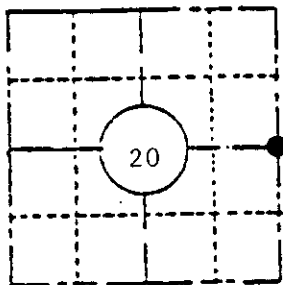
INSTRUCTIONS :

This record shall show the location of the corner and shall include all of the following nine elements (a through i).

- (a) Identify the corner by reference to the U.S. public land survey system.

July, 1863 - William E. Daugherty, Deputy Surveyor
 Set one-quarter section post.
 Original bearing trees:
 Tamarack 7", S36°W, 10 links
 Tamarack 7", N40°E, 7 links

EAST QUARTER CORNER
 SECTION 20
 T37N - R8E



Oct. 3, 1905 - D. H. Vaughan, Oneida County Surveyor
 Set East one-quarter post.

New bearing trees:
 Tamarack 10", S50°W, 15½ links (10.23 feet)
 Tamarack 7", S40°E, 19 links (12.54 feet)

LOCATION SKETCH

(Location of landmark indicated by "●")

- (b) Describe any record evidence, monument evidence, occupational evidence, testimonial evidence or any other material evidence you considered, and whether the monument was found or placed.

Replaced a found 1-1/4" diameter iron pipe and old down scribed wood post with an Oneida County capped aluminum monument (2" diameter x 60" long)

Remains of D. H. Vaughan's BTs: Tamarack stump S51°W, 9.3 feet
 Tamarack stump S44°E, 12.3 feet

Bearing tree by others marked "0" 8" Balsam (dead) S50°W, 15.3 feet

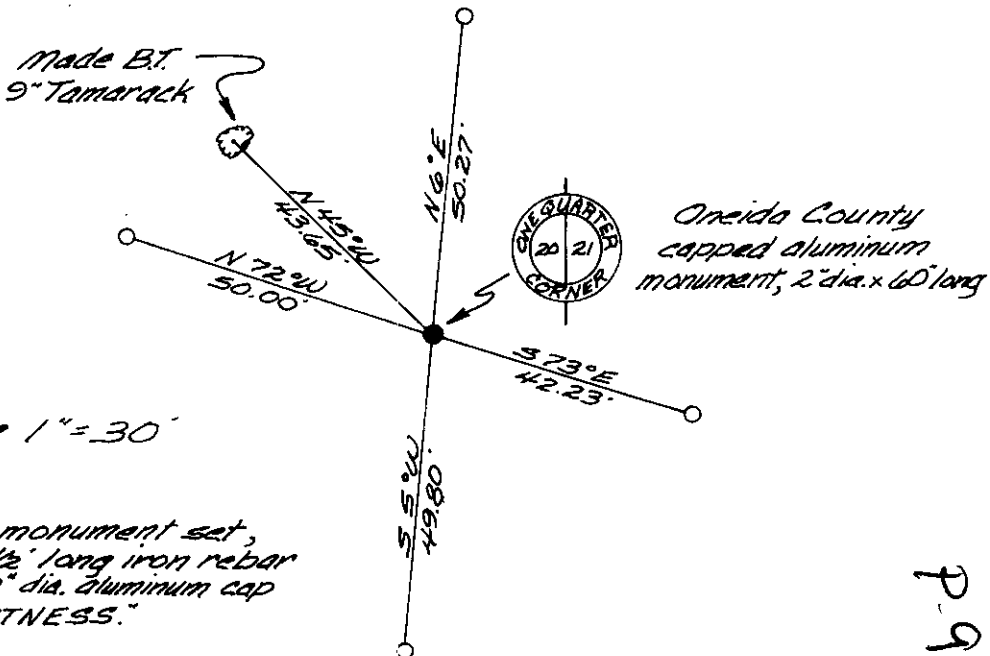
- (c) In the plan view drawing below, provide reference ties to at least 4 witness monuments, or, if the location is within a municipality, to at least 2 witness monuments. (Witness monuments shall be made of concrete, natural stone, iron or other equally durable material, except wood.) Describe witness monuments.

- (d) Show a plan view drawing depicting the relevant monuments and reference ties which is sufficient in detail to enable accurate relocation of the corner monument if the corner monument is disturbed. Indicate north.

Bearings Magnetic

Scale 1" = 30'

○ = Reference monument set, 1/2" dia. x 4 1/2" long iron rebar rod with 2" dia. aluminum cap marked "WITNESS."



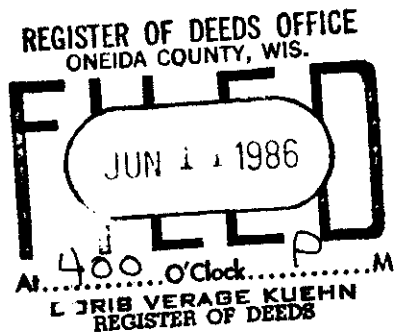
(c) Describe any material discrepancy between the location of the corner as restored or reestablished and the location of that corner as previously restored or reestablished by distance and direction. Show the discrepancy on the plan view drawing under (d), above. Show the distances between the corner as previously restored or reestablished and (1) the corner as restored or reestablished, and (2) to at least 2 of the witness monuments shown on the drawing in (d), above.

NONE

(f) Was the corner restored through acceptance of (1) an obliterated evidence location, or, (2) a found perpetuated location?

The corner was restored through acceptance of a found perpetuated location as re-established by D. H. Vaughan in 1905.

(g&h) Was the corner reestablished through lost corner proportionate methods? If so, show the method, including the directions and distances to other public land survey corners used as evidence or used for proportioning in determining the corner location? *No.*



Affix Land Surveyor Seal

(i) I, JAMES F. KASSON - S-1416
(type or print name) certify that the corner location shown on this record was determined by me or under my direction and control and that this U.S. Public Land Survey Monument Record is correct and complete to the best of my knowledge and belief.

James F. Kasson
Signature

June 22nd, 1983
Date