

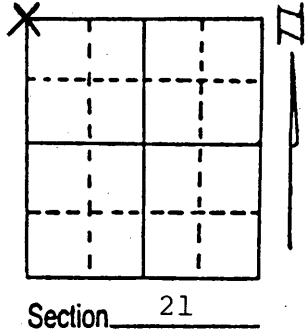
U.S. PUBLIC LAND SURVEY MONUMENT RECORD

Note: This form is intended and designed to fulfill all requirements of Wisconsin Administrative Code, Chapter A-E 7.08 U.S. Public Land Survey Monument Record (3) (a) (b) (c) (d) (e) (f) (g) (h) (i). An additional sheet may be added if necessary to conform with said requirements.

(a) Corner location: Township 37 North
 Range 8 East/West

Town/City/Village Newbold

County Oneida



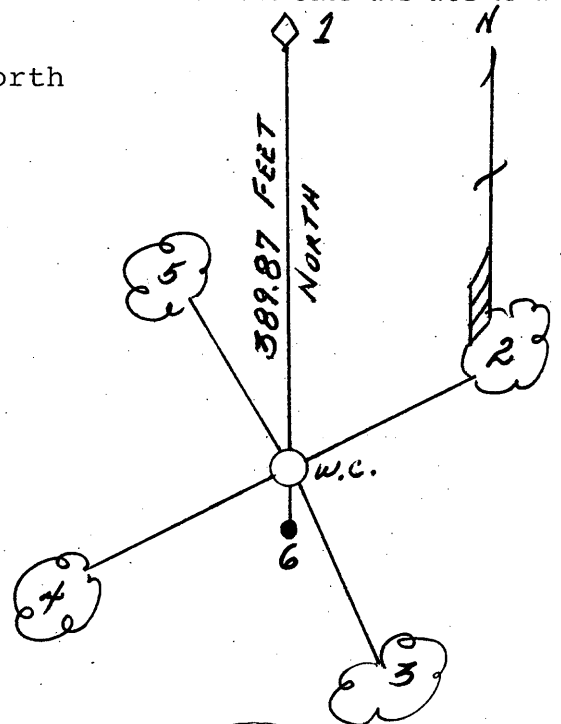
(b) (f) (g) (h) Description of monument found at this corner and if it was accepted, state all evidence (material, testimonial, occupational, plats, records, other monuments) used as a basis for accepting. If not accepted or if nothing was found, state evidence used as basis for establishing location. If reestablished through lost corner proportionate methods, indicate all monuments, distances and directions used to establish.

July 1863, Wm. E. Daugherty set post for section corner - 16, 17, 20 & 21:
 10" Tamarack, S37°E, 17 Links (11.22')
 10" Tamarack, N48°W, 11 Links (7.26')
 September 28, 1954 F. R. Wincentzen found Vaughn's BTs and squared post in place.
 March 24, 1988 Milo E. Stefan found post in beaver pond with two dead BTs - area flooded:
 6" Elm, S5°W, 73.5'
 5" Tamarack, S39°W, 55.6'
 As area is flooded I decided to preserve the position by establishment of a witness corner south on the section line 389.87 feet.

(c) (d) (e) Plan view of corner with ties to at least 4 witness monuments. If in disagreement with previously established corner, show the distances between the two corners and also indicate the ties to the disputed corner.

1. Corner is marked by a post 389.87 feet north along the section line. Witness corner marked by an Oneida County monument.
2. 8" White Birch, N70°E, 31.96 Feet (WC BT)
3. 14" Red Maple, S31°E, 31.14 Feet (WC BT)
4. 6" Red Maple, S72°W, 10.25 Feet (WC BT)
5. 8" Red Maple, N36°W, 20.67 Feet (WC BT)
6. Plastic sign post, south, 1.5 Feet

(Trees scribed accordingly)
 Distances to nail in side of trees.



(i) I, Milo E. Stefan
 (type or print name) certify that the corner location on this record was determined by me or under my direction and control and that this U.S. Public Land Survey Monument Record is correct and complete to the best of my knowledge and belief.

Milo E. Stefan
 Signature

May 17, 1988

Date 3708203700



Index No. N-9

~~3708203700~~