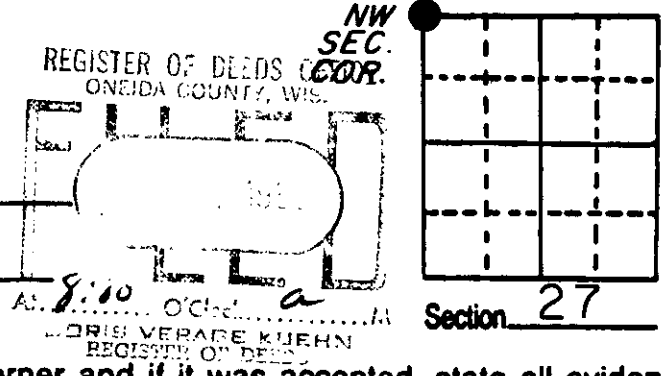


# U.S. PUBLIC LAND SURVEY MONUMENT RECORD

**Note:** This form is intended and designed to fulfill all requirements of Wisconsin Administrative Code, Chapter A-E 5.02, U.S. Public Land Survey Monument Record (3) (a) (b) (c) (d) (e) (f) (g) (h) (i). An additional sheet may be added if necessary to conform with said requirements.

(a) Corner location: Township 37 North  
 Range 8 East/West  
 Town/City/Village of NEWBOLD  
 County ONEIDA COUNTY



(b) (f) (g) (h) Description of monument found at this corner and if it was accepted, state all evidence (material, testimonial, occupational, plats, records, other monuments) used as a basis for accepting. If not accepted or if nothing was found, state evidence used as basis for establishing location. If reestablished through lost corner proportionate methods, indicate all monuments, distances and directions used to establish.

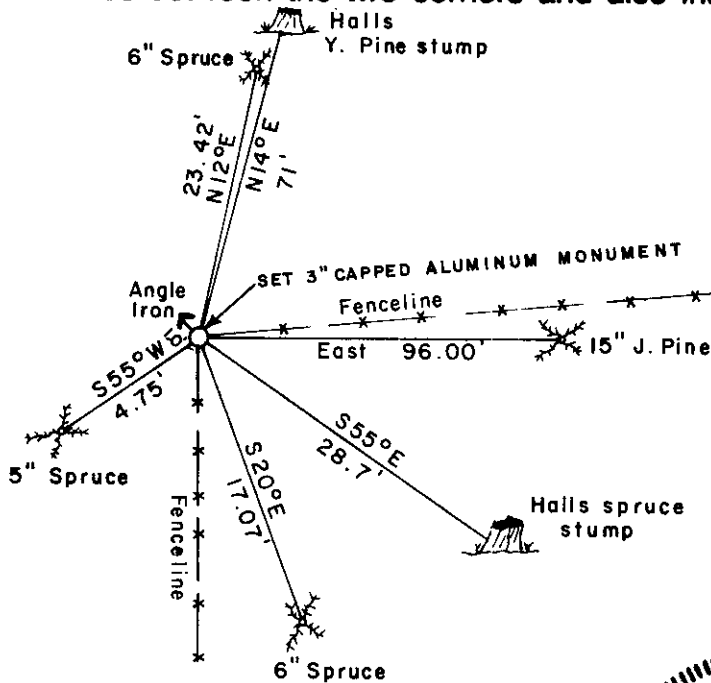
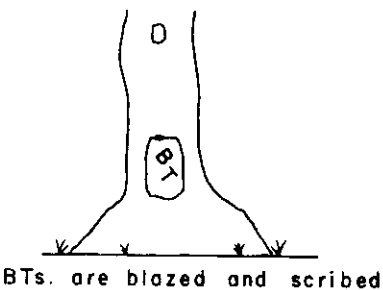
- 1863 W.E. Daugherty established the corner at 80 chains north of SW corner Sec. 27, in swamp. BTs; Spruce 6, S 30E, 30 lks., Spruce 6, N 38W, 6 lks.
- 1902 D.H. Vaughan states he went to the SW corner 22-37-8 identified by original post and BTs.
- 1925 D.S. Burnett found old stake at corner BTs. gone.
- 1931 Hall identifies original NW corner Sec. 27 by post, agreeing with remains of original trees. New BTs; Y. Pine 12, N 14½ E 1.076 chains, Spruce 5, S 55E, .43½ chains.
- 1976 Sy Poskie has an iron pipe at corner.
- 1986 At this corner I found an old scribed wood post at the intersection of the fence East & South, and a 1"x 6' angle iron, and the remains of Halls BTs. I replaced the wood post with an Oneida County aluminum capped monument and witnessed it as shown below.

(c) (d) (e) Plan view of corner with ties to at least 4 witness monuments. If in disagreement with previously established corner, show the distances between the two corners and also indicate the ties to the disputed corner.

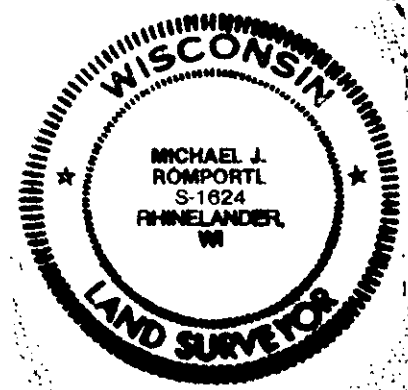
Distances to 6" spike in sides of trees.

Magnetic bearings taken with handheld compass.

No scale



(i) I, MICHAEL J. ROMPORTL R.L.S. 1624  
 (type or print name) certify that the corner location on this record was determined by me or under my direction and control and that this U.S. Public Land Survey Monument Record is correct and complete to the best of my knowledge and belief.



Index No. R-13

Michael J. Romportl Sept. 29, 1986  
 Signature Date

GENISOT & ASSOCIATES INC.  
 1512 EAGLE ST., RHINE, WI.

3708210000