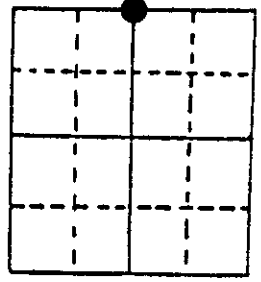


# U.S. PUBLIC LAND SURVEY MONUMENT RECORD

Note: This form is intended and designed to fulfill all requirements of Wisconsin Administrative Code, Chapter A-E 7.08 U.S. Public Land Survey Monument Record (3) (a) (b) (c) (d) (e) (f) (g) (h) (i). An additional sheet may be added if necessary to conform with said requirements.

(a) Corner location: Township 37 North  
 Range 8 East



Town/City/Village Newbold  
 County Oneida

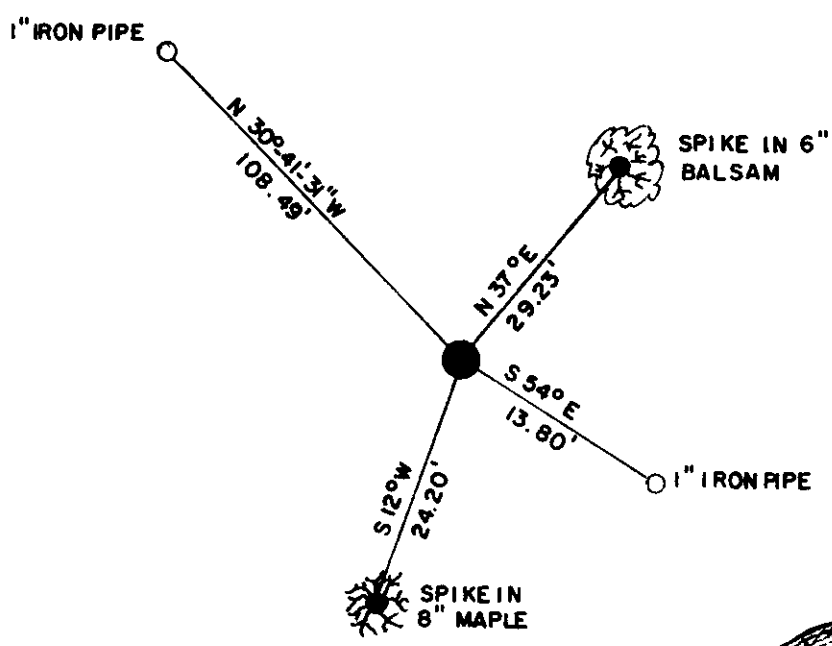
Section 28

(b) (f) (g) (h) Description of monument found at this corner and if it was accepted, state all evidence (material, testimonial, occupational, plats, records, other monuments) used as a basis for accepting. If not accepted or if nothing was found, state evidence used as basis for establishing location. If reestablished through lost corner proportionate methods, indicate all monuments, distances and directions used to establish. Indicate type of monument found or set and sign post.

- 1863 William Daugherty set Post Aspen 10" S 1½ W 33 lks. Y. Pine 15" N 79 E 54 lks.
- 1901 Vaughan found Post and original BT's.
- 1982 L. Schmit found 1¼" iron pipe and 4" x 4" wood post.
- 1989 William Bandow found 1¼" iron pipe and 4" x 4" wood post replaced iron pipe with Oneida County capped monument. Set white plastic post West 1' corner referenced as shown below.

(c) (d) (e) Plan view of corner with ties to at least 4 witness monuments. If in disagreement with previously established corner, show the distances between the two corners and also indicate the ties to the disputed corner.

NOTE:  
 MEASUREMENTS TAKEN FROM 6" SPIKE IN SIDE OF TREES  
 BEARINGS TAKEN WITH HANDHELD MAGNETIC COMPASS  
 NO SCALE



(i) I, William E. Bandow  
 (type or print name) certify that the corner location on this record was determined by me or under my direction and control and that this U.S. Public Land Survey Monument Record is correct and complete to the best of my knowledge and belief.



William E. Bandow      12-29-89  
 Signature      Date

Index No. R-11

3708210020