

U.S. PUBLIC LAND SURVEY MONUMENT RECORD

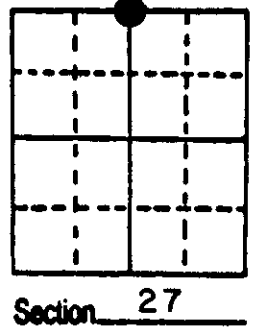
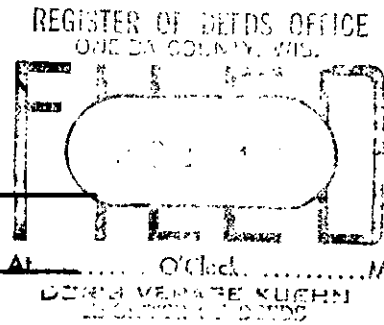
Note: This form is intended and designed to fulfill all requirements of Wisconsin Administrative Code, Chapter A-E 5.02, U.S. Public Land Survey Monument Record (3) (a) (b) (c) (d) (e) (f) (g) (h) (i). An additional sheet may be added if necessary to conform with said requirements.

(a) Corner location: Township 37 North

Range 8 East ~~West~~

Town/City/Village NEW BOLD

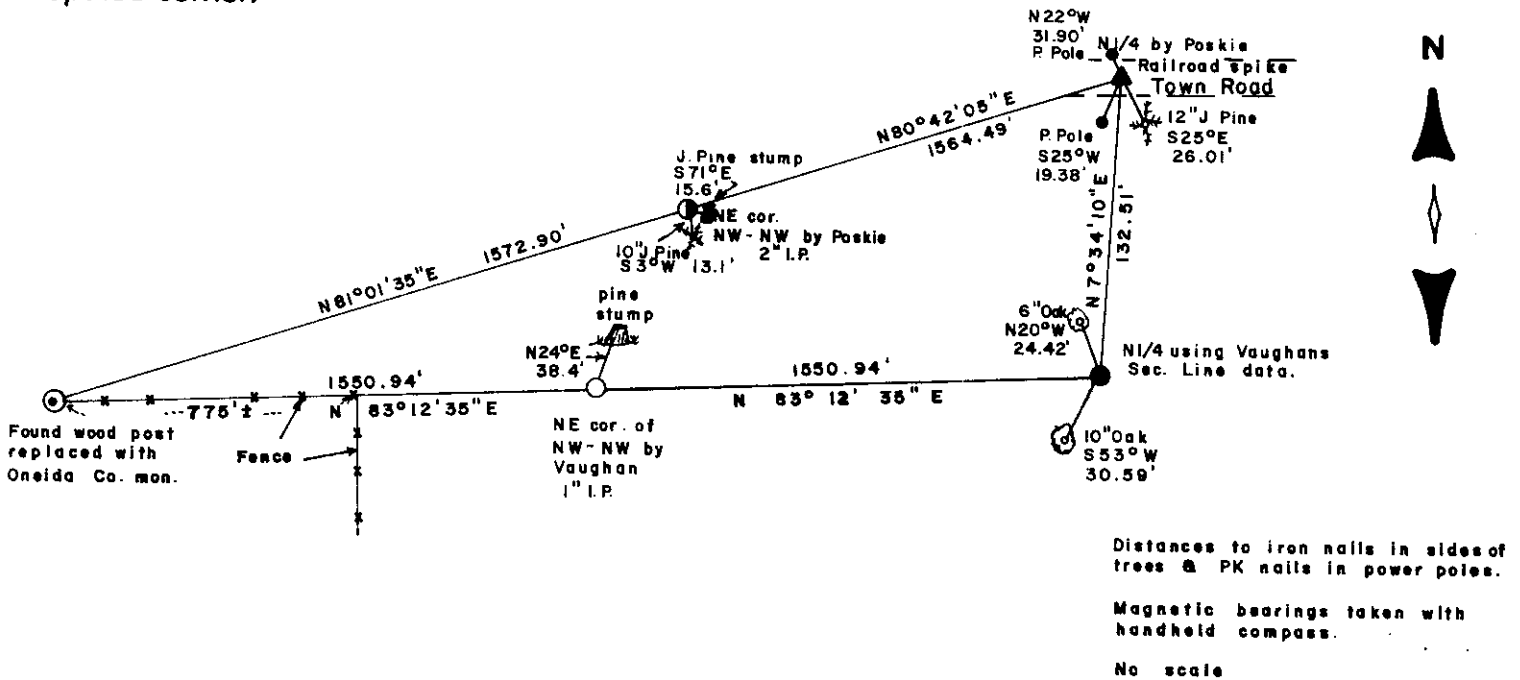
County ONEIDA



(b) (f) (g) (h) Description of monument found at this corner and if it was accepted, state all evidence (material, testimonial, occupational, plats, records, other monuments) used as a basis for accepting. If not accepted or if nothing was found, state evidence used as basis for establishing location. If reestablished through lost corner proportionate methods, indicate all monuments, distances and directions used to establish.

- 1863 W.E. Daugherty set $\frac{1}{4}$ cor. at 39.95, BTs; B. Pine 10, S 52° E 4, B. Pine 6, N 10° W 31.
 - 1899 D.H. Vaughan states, west from cor. to 22-23-26-27 var. $2^{\circ}30'$ E 42.29 $\frac{1}{4}$ post; east from cor. to 21-22-27-28 var. 10° E 47.26, fell 231 S. corrected west var. $15^{\circ}48'$, 23.62 set $\frac{1}{8}$. BTs; B. Pine 7, N 40° W 46; B. Pine 9, S 59° E, 59.
 - 1902 April 15, D.H. Vaughan while in Sec. 23-37-3 states; went to SW cor. and run west var. 2° E 42.21 fell 5 lks. south of $\frac{1}{4}$ post 1 old BT., B. pine 10, S 15° W 47. (New)
 - 1902 April 17, D.H. Vaughan states that he ran from the E $\frac{1}{8}$ post on N. line of Sec. 22, South 81.95, and fell $27\frac{1}{2}$ E. of a point where I set $\frac{1}{8}$ post 21.10 $\frac{1}{2}$ west of SE cor. 22. BT. B. Oak S $75\frac{1}{2}^{\circ}$ E 147.
 - 1921 D.H. Vaughan states, I began at the SE cor. 22 var. 4° E 42.66, found $\frac{1}{4}$ post on line; 89.48 fell 8.16 N. of cor., found post I set 20 years ago, orig. tree O.K., set new post and went East and set $\frac{1}{8}$ post on south line..
- OVER

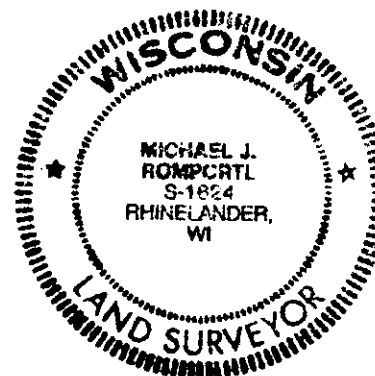
(c) (d) (e) Plan view of corner with ties to at least 4 witness monuments. If in disagreement with previously established corner, show the distances between the two corners and also indicate the ties to the disputed corner.



(i) I, MICHAEL J. ROMPORTL R.L.S. 1624
(type or print name) certify that the corner location on this record was determined by me or under my direction and control and that this U.S. Public Land Survey Monument Record is correct and complete to the best of my knowledge and belief.

Michael J. Romportl 6-10-86
Signature Date

GENISOT & ASSOCIATES INC.
1512 EAGLE ST., RHINE, WI.



Index No. R-15

3708220020

Stock No. 26273

CONT.

BT: W. Pine 12, N $25\frac{1}{2}^{\circ}$ E 58.

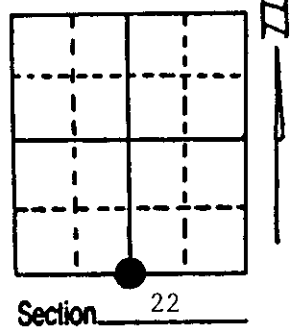
- 1976 Sy Poskie established $S\frac{1}{4}$ from information he found in Lytles notes for the Section north and Vaughans distances on the south line. He said he did not find the B.T. that I found at the NE corner of the NW-NW
- 1986 At the $\frac{1}{4}$ corner between 22 and 27 I found a railroad spike representing Sy Poskies corner.
- While working in the NW-NW I found an iron pipe approximately 50' Southerly of the corner Poskie used for the NE corner of the NW-NW and a pine stump scribed $1/85$ B.T. N 24° E 38.4' From the iron pipe I found. I used the NW corner of the Section and the iron pipe I found and extended a line to the east to a position where the $\frac{1}{4}$ corner would fall and set an iron pipe at the corner. This corner falls south of Poskies $\frac{1}{4}$. I was unable to find any original evidence of the corner. There is a fence that runs from the original NW corner of Section 27 East along the line I retraced for approximately 775'.

U.S. PUBLIC LAND SURVEY MONUMENT RECORD

Note: This form is intended and designed to fulfill all requirements of Wisconsin Administrative Code, Chapter A-E 7.08 U.S. Public Land Survey Monument Record (3) (a) (b) (c) (d) (e) (f) (g) (h) (i). An additional sheet may be added if necessary to conform with said requirements.

(a) Corner location: Township 37 North
 Range 8 East/West

Town/City/Village Newbold
 County Oneida



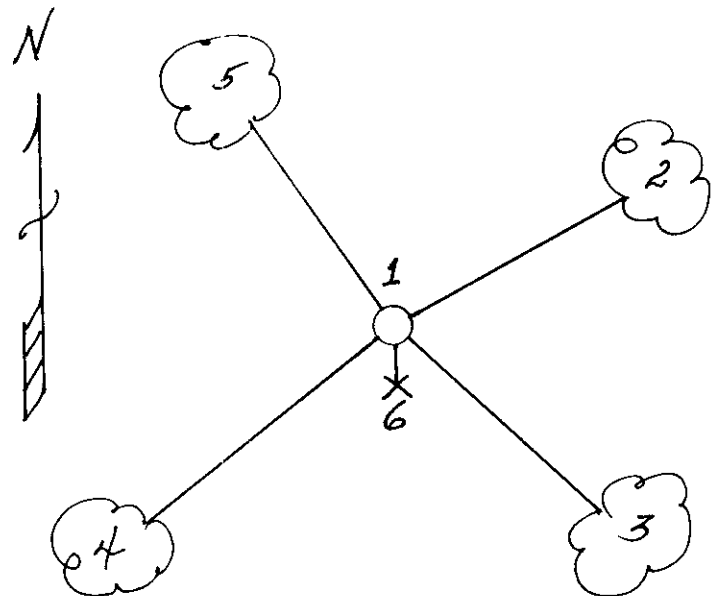
(b) (f) (g) (h) Description of monument found at this corner and if it was accepted, state all evidence (material, testimonial, occupational, plats, records, other monuments) used as a basis for accepting. If not accepted or if nothing was found, state evidence used as basis for establishing location. If reestablished through lost corner proportionate methods, indicate all monuments, distances and directions used to establish. Indicate type of monument found or set and sign post.

- 1863 - Wm. E. Daugherty established this corner, set a wood post with two BTs:
 10" B. Pine, S52°E, 4 Links (2.64') 6" B. Pine, N10°W, 31 Links (20.46')
- 1899 - D.H. Vaughan found evidence of this corner and used it in 1902 and 1921 as indicated by Certificate filed by surveyor Michael Romportl 6/10/1986.
- 1992-1995 - Milo E. Stefan have used the Romportl restoration for several surveys in Section 22. I concur that Romportl's restoration is proper and feel this corner position should be monumented to standard specs at this time.
- See the Romportl Restoration Certificate for more details.

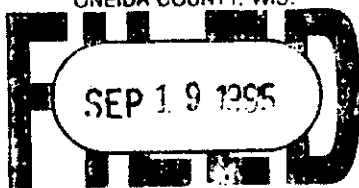
(c) (d) (e) Plan view of corner with ties to at least 4 witness monuments. If in disagreement with previously established corner, show the distances between the two corners and also indicate the ties to the disputed corner.

- 1) 2" x 30" Aluminum monument with iron pipe inside.
- 2) Power Pole, N58°E, 23.73'.
- 3) 3" White Spruce, S46°E, 25.05'.
- 4) 10" Red Oak, S48°W, 32.98'.
- 5) 6" Red Oak, N40°W, 23.24'.
- 6) Plastic Sign Post, South, .75'.

Distance to nail in side of BTs.
 Stump blazes scribed "BT".
 BT tags placed on bearing trees.



REGISTER OF DEEDS OFFICE
 ONEIDA COUNTY, WIS.



At 10 O'Clock AM
Milo E. Stefan
 THOMAS H. LEIGHTON
 REGISTER OF DEEDS

(i) I, Milo E. Stefan (type or print name) certify that the corner location on this record was determined by me or under my direction and control and that this U.S. Public Land Survey Monument Record is correct and complete to the best of my knowledge and belief.

Milo E. Stefan Signature
 September 11, 1995 Date



Index No. R-15

370822 0020