

U.S. PUBLIC LAND SURVEY MONUMENT RECORD

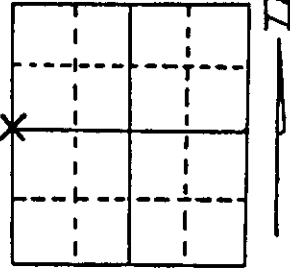
Note: This form is intended and designed to fulfill all requirements of Wisconsin Administrative Code, Chapter A-E 7.08 U.S. Public Land Survey Monument Record (3) (a) (b) (c) (d) (e) (f) (g) (h) (i). An additional sheet may be added if necessary to conform with said requirements.

(a) Corner location: Township 37 North

Range 8 East/West

Town/City/Village Newbold

County Oneida



Section 23

(b) (f) (g) (h) Description of monument found at this corner and if it was accepted, state all evidence (material, testimonial, occupational, plats, records, other monuments) used as a basis for accepting. If not accepted or if nothing was found, state evidence used as basis for establishing location. If reestablished through lost corner proportionate methods, indicate all monuments, distances and directions used to establish.

July 1863, Wm. E. Daugherty set post for 1/4 corner to sections 22 and 23:

10" White Pine, N84°E, 89 Links (58.74')

20" White Pine, N22°W, 163 Links (107.58')

11/11/1934, Hall found post hole and set 2" x 48" iron pipe and Tamarack post scribed 1/4S, S23, S22 and made new BT's:

5" Jack Pine, S75°W, 56 1/2 Links (37.29')

8" Jack Pine, S20°E, 77 Links (50.82')

3/18/1964, F.R. Wincentzen found - post under rock and both of Hall's BTs.

5/13/1988, Milo E. Stefan found Hall's SE BT, a stump cut off very low, BT scribing plain - pulled off this BT and excavated road and found top of Hall's Tamarack post scribed and in good condition placed in 16" of stove pipe. Hall's SW BT falls in lawn. Both original BTs fall in lawn and driveway.

I accept this post position and set Oneida County Monument.

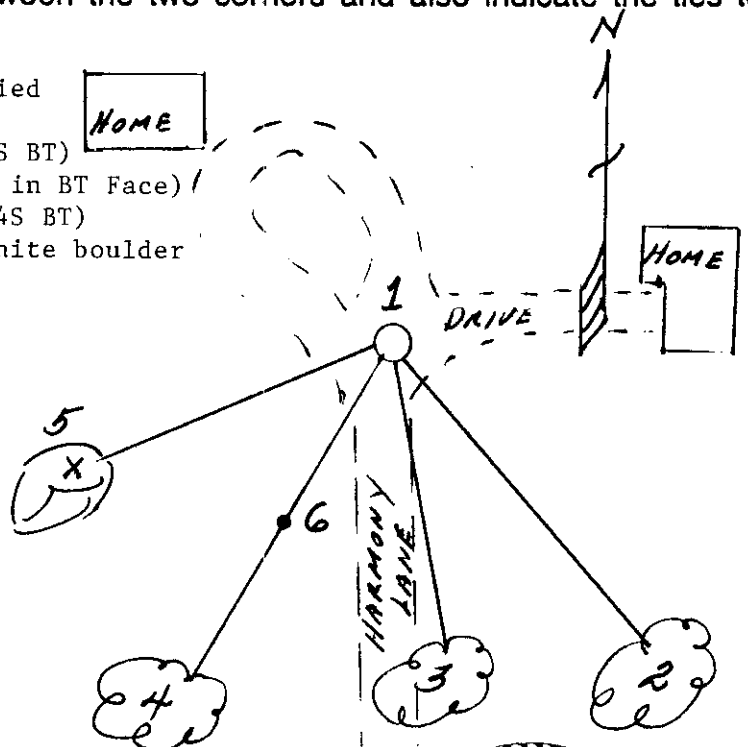
(c) (d) (e) Plan view of corner with ties to at least 4 witness monuments. If in disagreement with previously established corner, show the distances between the two corners and also indicate the ties to the disputed corner.

1. Oneida County Aluminum monument buried 12" below road surface.
2. 14" Red Oak, S31°E, 80.82 Feet (1/4S BT)
3. 16" Jack Pine, S9°E, 67.25 Feet (PK in BT Face)
4. 8" Red Pine, S29°W, 94.79 Feet (1/4S BT)
5. "X" on peak of 5' x 3 1/2' x 1' granite boulder
6. Plastic sign post S29°W, 44.5 Feet

(BTs scribed accordingly)

Distances to nail in side of trees.

SEE USPLSMR
by Dennis Roberts
dated 12-27-00 for
revised location
AND TIES
MQR 2/14/01



(i) I, Milo E. Stefan
(type or print name) certify that the corner location on this record was determined by me or under my direction and control and that this U.S. Public Land Survey Monument Record is correct and complete to the best of my knowledge and belief.

Milo E. Stefan Signature
Date May 13, 1988



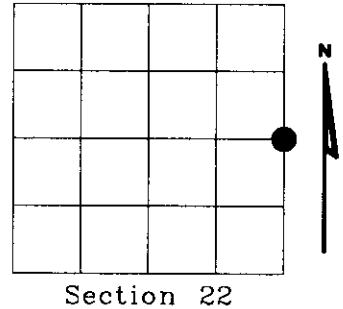
Index No. P-17

3705222000

U.S. PUBLIC LAND SURVEY MONUMENT RECORD

NOTE: This form is intended and designed to fulfill all requirements of Wisconsin Administrative Code, Chapter A-E 7.08 U.S. Public Land Survey Monument Record (3)(a)(b)(c)(d)(e)(f)(g)(h)(i). An additional sheet may be added if necessary to conform with said requirements.

(a) Corner location: Township 37 North
 Range 08 East
 Town of NEWBOLD
 ONEIDA County, Wisconsin



Section 22

(b)(f)(g)(h) Description of monument found at this corner and if it was accepted, state all evidence (material, testimonial, occupational, plats, records, other monuments) used as a basis for accepting. If not accepted or if nothing was found, state evidence used as basis for establishing location. If reestablished through lost corner proportionate methods, indicate all monuments, distances and directions used to establish. Indicate type of monument found or set and sign post.

JULY 1863, WM. DAUGHERTY SET POST FOR 1/4 CORNER TO SECTIONS 22 & 23: 10" WHITE PINE, N84°E, 89 LINKS (58.74')
 20" WHITE PINE, N22°W, 163 LINKS (107.58')

11-11-1934, HALL FOUND POST HOLE AND SET 2" X 48" IRON PIPE AND TAMARACK POST SCRIBED 1/4S, S 23, S 22, AND MADE NEW B.T.'S:
 5" JACK PINE, S75°W, 56 1/2 LINKS (37.29')
 8" JACK PINE, S20°E, 77 LINKS (50.82')

1948, F.R. WINCENTSEN - HAD 14" J. PINE, S23 1/2°E, 51.1 FEET

1951, CY POSKIE, USED 2" IRON PIPE, MAP # B1922

3-18-1964, F.R. WINCENTSEN FOUND - POST UNDER ROCK AND BOTH OF HALL'S B.T.'S

1975, GERALD B. INMAN, FOUND 2" IRON PIPE, AS SHOWN ON PLAT OF WILDWOOD SHORES, VOL. 11 PG. 40

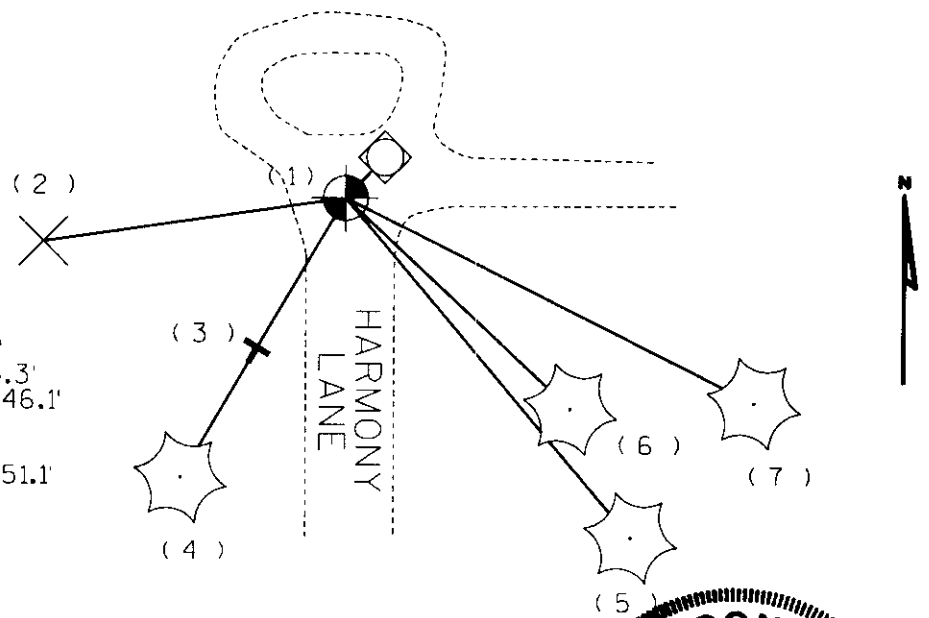
5-13-88, MILD E. STEFAN FOUND HALL'S SE B.T., A STUMP CUT OFF VERY LOW, B.T. SCRIBING PLAIN - PULLED OFF THIS B.T. AND EXCAVATED ROAD AND FOUND TOP OF HALL'S TAMARACK POST SCRIBED AND IN GOOD CONDITION PLACED IN 16" OFSTOVE PIPE. HALL'S SW B.T. FALLS IN LAWN, BOTH ORIGINAL B.T.'S FALL IN LAWN AND DRIVEWAY. ACCEPTED THIS POST POSITION AND SET ONEIDA COUNTY MONUMENT 12" BELOW ROAD SURFACE.

NEW B.T.'S:
 14" RED OAK, S31°E, 80.82 FEET (1/4S BT)
 16" JACK PINE, S09°E, 67.25 FEET (P.K. IN B.T. FACE)
 8" RED PINE, S29°W, 94.79 FEET (1/4S B.T.)
 "X" ON PEAK OF 5' X 3 1/2' X 1' GRANITE BOULDER (NO BEARING OR DIST.)
 PLASTIC SIGN POST S29°W, 44.5 FEET

2000, DENNIS B. ROBERTS, FOUND 2" IRON PIPE 10" BELOW GRAVEL SURFACE, AND ONEIDA COUNTY MONUMENT SW OF 2" IRON PIPE +/- 1.5'. ACCEPT 2" IRON PIPE AS POSITION OF ONE-QUARTER CORNER, AND WITNESS AS SHOWN.

(c)(d)(e) Plan view of corner with ties to at least 4 witness monuments. If in disagreement with previously established corner, show the distances between the two corners and also indicate the ties to the disputed corner.

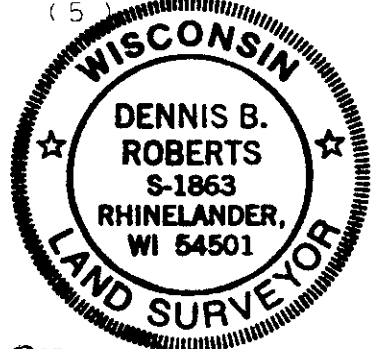
DISTANCES TO NAIL
 IN SIDE OF B.T.



- (1) ONEIDA COUNTY MONUMENT
 S44°09'27"W, 1.53'
- (2) "X" ON PEAK OF 5' X 3 1/2' X 1'
 GRANITE BOULDER, S 81°W, 65.3'
- (3) PLASTIC SIGN POST, S 30°W, 46.1'
- (4) 12" RED PINE S30°W, 96.33'
- (5) 16" JACK PINE, S08°E, 67.91'
- (6) 12" JACK PINE STUMP, S23°E, 51.1'
- (7) 16" RED OAK, S32°E, 80.83'

(i) I, Dennis Roberts, Registered Land Surveyor *S-1863, hereby certify that the corner location on this record was determined by me or under my direction and control and that this U.S. Public Land Survey Monument Record is correct and complete to the best of my knowledge and belief.

Dennis B. Roberts 12-27-00
 Signature Date



3708222000

Index No. P 17