

This form is intended to fulfill the requirements of Chapter A-E 7.08 (3)(a) thru (i) U.S. Public Land Survey Monument Location Record, Wisconsin Administrative Code. Use the reverse side of form for continuation.

U.S. PUBLIC LAND SURVEY MONUMENT LOCATION RECORD

Recorders Data

USPLS CORNER: SOUTH WITNESS MC SECTION: 23 TOWNSHIP: 37 NORTH RANGE: 08 EAST

NAME OF WATERWAY FOR M.C. CORNER: FETKE LAKE SECTION LINE: WEST

(CITY)(VILLAGE)(TOWN) OF: NEWBOLD COUNTY OF: ONEIDA

Description of monument found or placed and all other evidence used as the basis for monument location; including monuments and related measurements required if the corner location was reestablished by lost corner proportionate methods. Also indicate name of original surveyor, original survey date and the corner monument, bearing trees, witness or other reference monuments established; including measured bearing and distance ties, from available records.

Found and accepted an older plumb and secure 1.5" dia. iron pipe with uncapped top 12" above grade. I left pipe in place and drove a standard 2" dia. by 30" aluminum pipe monument with split bottom end and stamped Oneida County cap over the iron pipe. Corner falls on the crest of steep bank down and out over wetland to lake shore North over 100' this date.

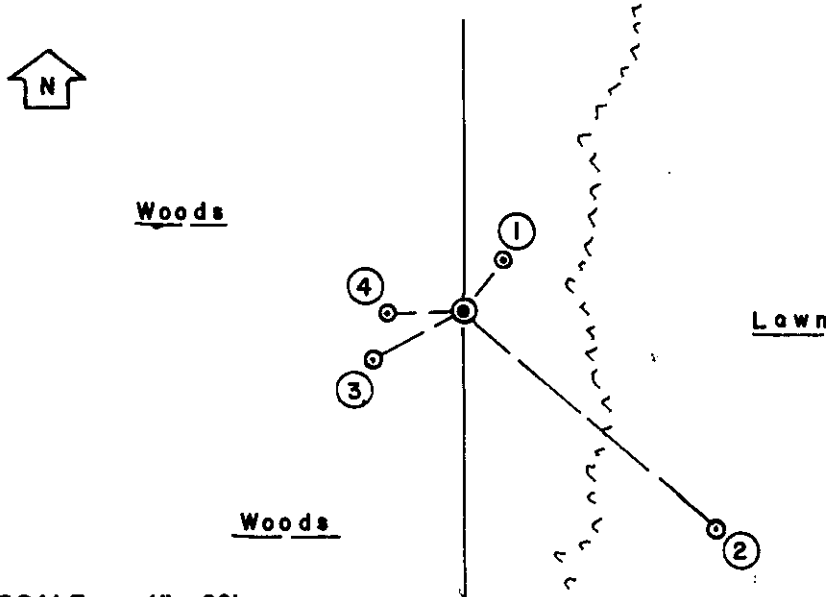
In July 1863, William E. Daugherty/GLO set a wood post on the South shore of Fetke Lake as a witness corner at 1.50 chains South of the NW corner of Section 23, and marked new BT's: An 8" Bw S20°E 54 links and an 8" Tamarack N16°W 24 links; all of which are now obliterated.

In 1902, D.H. Vaughan noted that he had found the original GLO witness corner and also noted a new BT: A 6" Tamarack S44°E 40.5 links; all of which are now obliterated in the wetland area along the South shore of Fetke Lake.

In 1975, Gerald B. Inman/RLS 891, notes a 1.25" dia. iron pipe as a meander corner South of Fetke Lake on the West line of Section 23 per County Plat of Wildwood Shores filed as Volume 11 of Plats Page 39 in Oneida County records; and again in 1976 on a Certified Survey Map filed as Volume 2 of Certified Survey Maps Page 376 in Oneida County records on January 25, 1977. No older BT's observed nearby this date.

NOTE: I AM ACCEPTING THIS CORNER LOCATION AS A WITNESS MC ONLY, AS I BELIEVE THAT ALL OF THE PREVIOUS EVIDENCE OF GLO WITNESS CORNER HAS BEEN LOST. SEE REVERSE FOR MY COMPUTATION OF THE LOCATION OF THE NW CORNER OF SECTION 23 IN FETKE LAKE BY BEARINGS INTERSECT USING WILDWOOD SHORES PLAT DATA.

Plan view map of monument location with bearing and distance ties to a minimum of four(4) described witness or reference monuments of concrete, natural stone, iron, live bearing trees or equivalent material. If applicable, also show a minimum of two(2) bearing and distance ties to any other monument found and not accepted; including the bearing and distance from the accepted monument.



WITNESS MONUMENT TIES:

- ① New BT 6" Or N38°E 10.23'
- ② New BT 20" Pr in lawn area North of existing lake lot residence S49°E at 51.66'.
- ③ New BT 6" Bw S62°W 15.95'.
- ④ New BT 5" Bw S89°W 12.05'.

Standard white poly 'T' corner marker post set 3" West of corner monument.

This corner easily accessed on foot from improved lake lot East of corner.

Fetke Lake was noted as a pond and not meandered by original GLO survey in 1863.

SCALE: 1" = 30'

Unless otherwise indicated, all bearing tree ties are to a .25" dia. by 2.5" long PK nail with a 1.25" dia. steel washer driven into unblazed right face and a .25" dia. by 2.5" long PK nail with a 2" dia. steel washer stamped BT is also driven into unblazed face of bearing tree at DBH; the basis for measured bearings is by compass to nearest degree and all tie distances are measured horizontal by steel tape corrected to nearest 1/100th feet at standard temperature of 68° F.

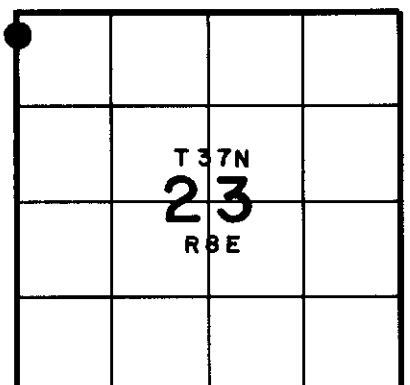
RLS SEAL:



LAND SURVEYOR CERTIFICATE:

I, William C. Rohde, hereby certify that I am duly licensed as a Professional Land Surveyor in the State of Wisconsin; that this USPLS monument location was determined by me and/or under my direct supervision and control; and that this U.S. Public Land Survey Monument Location Record is true and correct to the best of my knowledge and belief.

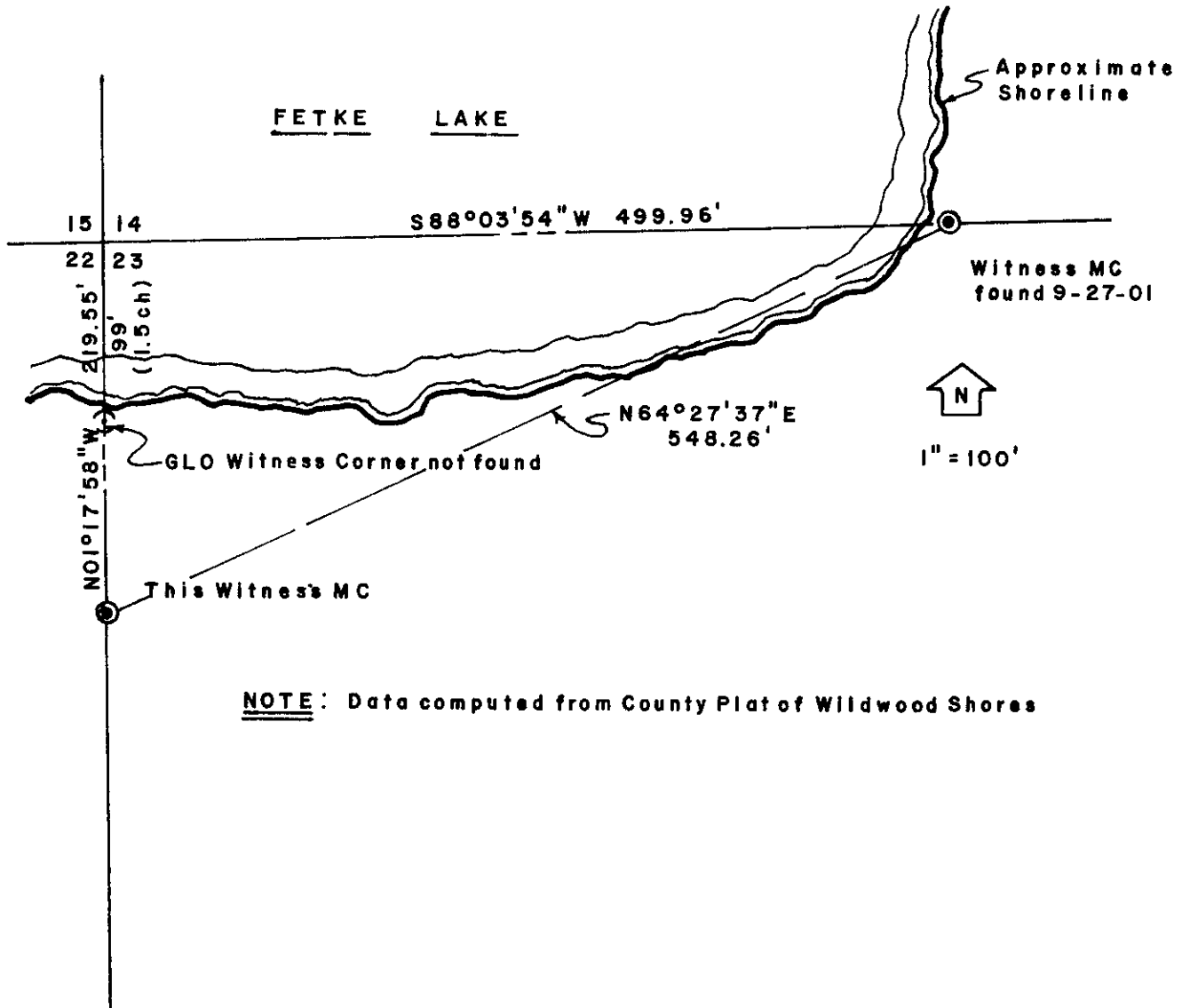
Signed *William C. Rohde*
 William C. Rohde RLS 841



SECTION LOCATION MAP
 INDEX NO. N 08 E



Stock No. 26273



NOTE: Data computed from County Plat of Wildwood Shores

