

U.S. PUBLIC LAND SURVEY MONUMENT RECORD

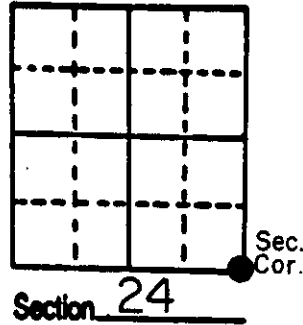
Note: This form is intended and designed to fulfill all requirements of Wisconsin Administrative Code, Chapter A-E 5.02, U.S. Public Land Survey Monument Record (a) (b) (c) (d) (e) (f) (g) (h) (i). An additional sheet may be added if necessary to conform with said requirements.

(a) Corner location: Township 37 North

Range 8 East ~~West~~

Town/City/Village PINE LAKE

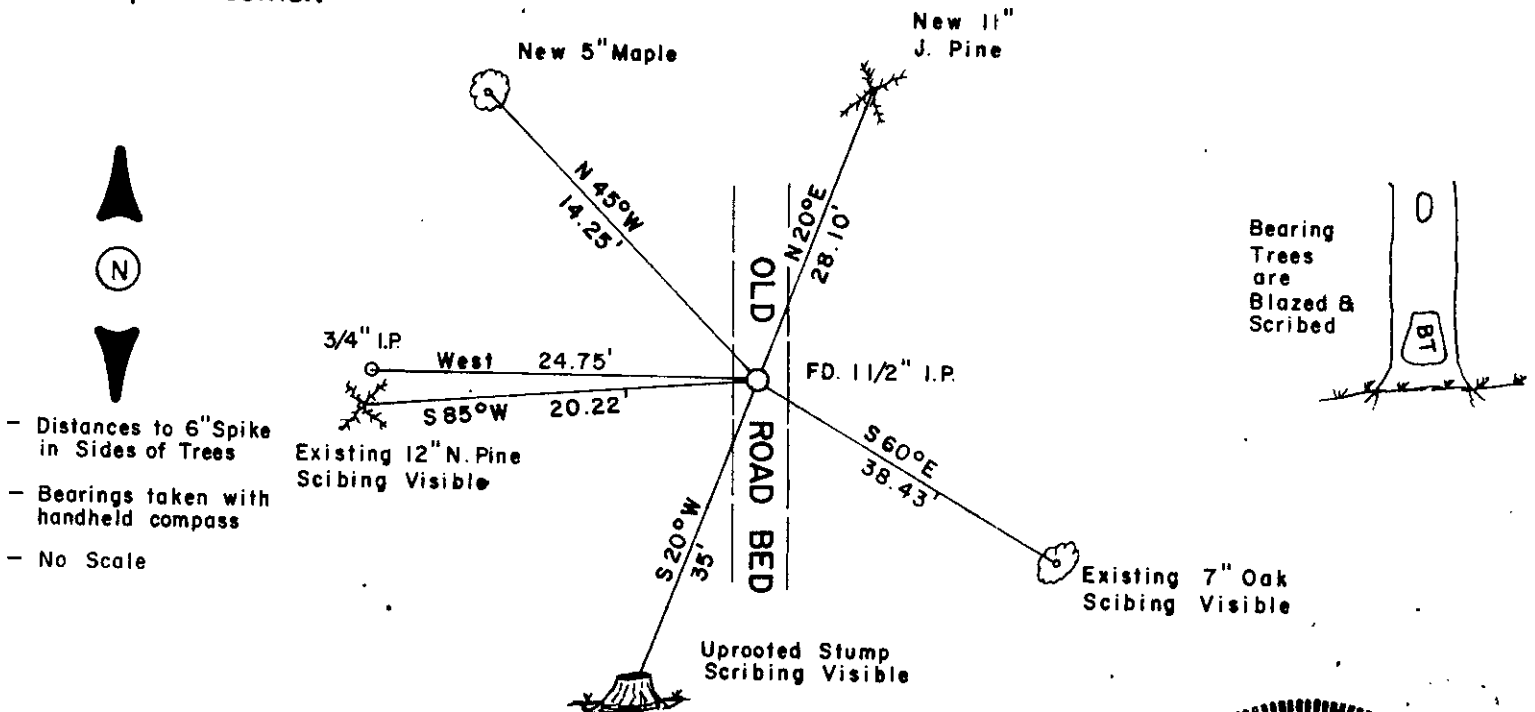
County ONEIDA



(b) (f) (g) (h) Description of monument found at this corner and if it was accepted, state all evidence (material, testimonial, occupational, plats, records, other monuments) used as a basis for accepting. If not accepted or if nothing was found, state evidence used as basis for establishing location. If reestablished through lost corner proportionate methods, indicate all monuments, distances and directions used to establish.

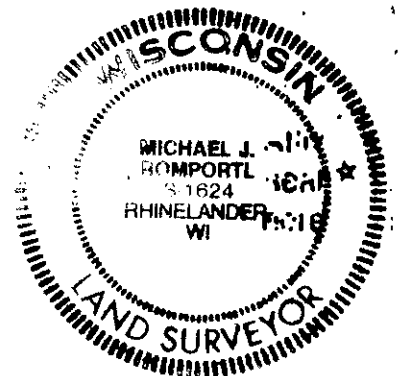
- 1859 Hiram Fellows established corner @ 80 chains north of SE corner Sec. 25, B.T.s; Blk. Pine 10 S 74 W 27, Y. Pine 20 N 20 W 56, Blk. Pine 10 N 42 E 22, Blk. Pine 12 S 4 E 26.
- 1894 Dorr @ corner and measures north 41.04 chains to $\frac{1}{4}$ corner.
- 1917 D.H. Vaughn went to SE corner, found stump of N.W. original B.T. and set an iron pipe for corner near large fence post.
- 1949 F.R. Wincentzen finds D.H. Vaughns iron pipe in west tire track of road bed. B.T.s; Pine stump S 18 W 35', S P. Pine 18 N 30 W 42.2'.
- At this corner I found the iron pipe in west tire track, this pipe checks with F.R.W.s & Dorrs measurements. I accepted this pipe for the corner position and witnessed it as shown below.

(c) (d) (e) Plan view of corner with ties to at least 4 witness monuments. If in disagreement with previously established corner, show the distances between the two corners and also indicate the ties to the disputed corner.



(i) I, MICHAEL J. ROMPORTL R.L.S.- 1624
 (type or print name) certify that the corner location on this record was determined by me or under my direction and control and that this U.S. Public Land Survey Monument Record is correct and complete to the best of my knowledge and belief.

Michael J. Romportl Signature
 DEC. 20, 1985 Date
 GENISOT & ASSOCIATES INC. - 1512 EAGLE ST. - RHINELANDER, WIS.



Index No. R-25

3705240000