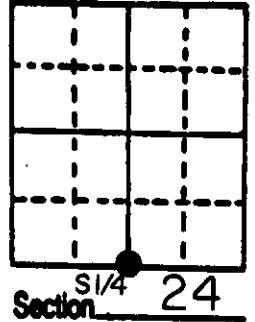


U.S. PUBLIC LAND SURVEY MONUMENT RECORD

Note: This form is intended and designed to fulfill all requirements of Wisconsin Administrative Code, Chapter A-E 5.02, U.S. Public Land Survey Monument Record (3) (a) (b) (c) (d) (e) (f) (g) (h) (i). An additional sheet may be added if necessary to conform with said requirements.

(a) Corner location: Township 37 North
 Range 8 East/West

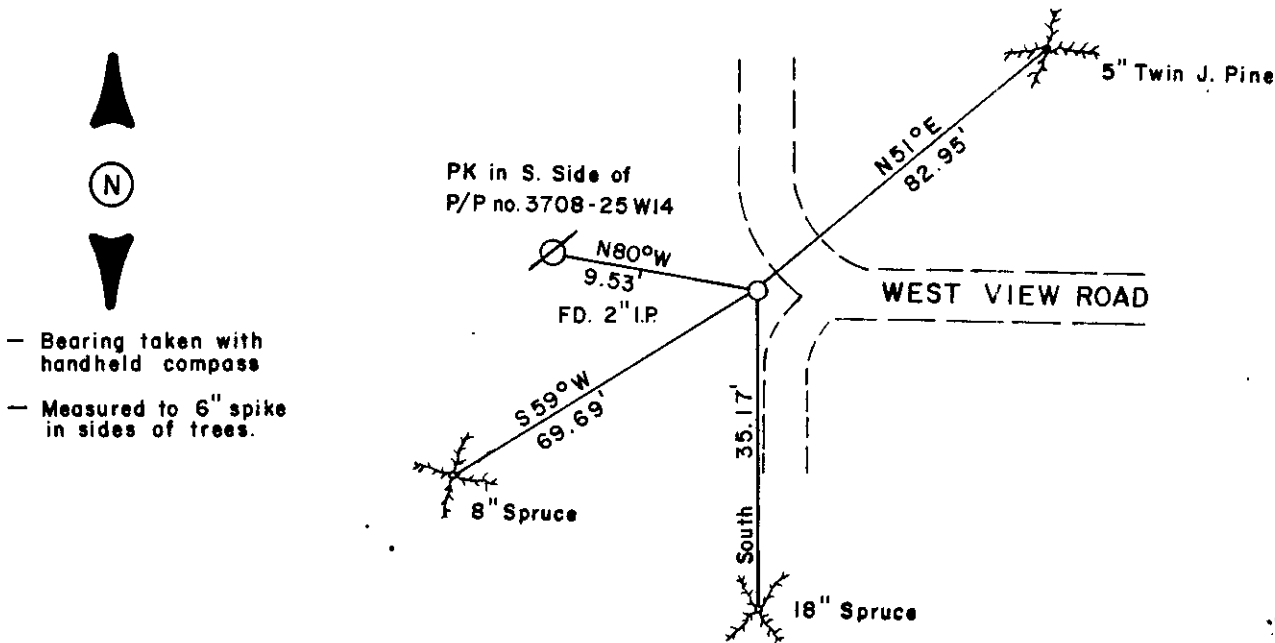
Town/City/Village PINE LAKE
 County ONEIDA



(b) (f) (g) (h) Description of monument found at this corner and if it was accepted, state all evidence (material, testimonial, occupational, plats, records, other monuments) used as a basis for accepting. If not accepted or if nothing was found, state evidence used as basis for establishing location. If reestablished through lost corner proportionate methods, indicate all monuments, distances and directions used to establish.

- 1863 W.E. Daugherty set $\frac{1}{4}$ @ 40.31 chains west of SE corner, B.T.s; Aspen 7, N 39 W 17, Blk. Pine 10 South 17.
- 1903 D.H. Vaughn identifies corner from Blk. Pine B.T. original, now a stump, ran South 83.58 $S\frac{1}{4}$ 25.
- 1917 D.H. Vaughn went to SE corner ran west 39.60 fell 33 N of $S\frac{1}{4}$, post marked $\frac{1}{4}$ S, North from $S\frac{1}{4}$ 39.22 chains.
- 1962 J.C. Kirby found iron pipe in place.
- 1964 A.L. Genisot finds iron pipe @ corner distance north to $\frac{1}{8}$ = 1294'.
- 1978 Robert Winat recovers iron pipe.
- At this corner I found a 2" iron pipe. This pipe checks closely with being on line between the $N\frac{1}{4}$ - $C\frac{1}{4}$ - $S\frac{1}{4}$ and the distance north to the $C\frac{1}{4}$ checks within 1'± and within 10'± to the SE corner as measured by Vaughn. I accepted this pipe for the corner position and witnessed it as shown below.

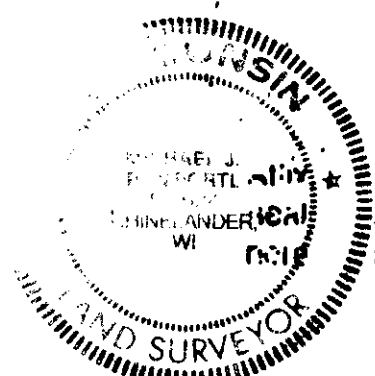
(c) (d) (e) Plan view of corner with ties to at least 4 witness monuments. If in disagreement with previously established corner, show the distances between the two corners and also indicate the ties to the disputed corner.



- Bearing taken with handheld compass
- Measured to 6" spike in sides of trees.

(i) I, MICHAEL J. ROMPORTL R.L.S. - 1624
 (type or print name) certify that the corner location on this record was determined by me or under my direction and control and that this U.S. Public Land Survey Monument Record is correct and complete to the best of my knowledge and belief.

Michael J. Romportl DEC. 20, 1985
 Signature Date



Index No. R-23

3708 24 002 0