

CERTIFIED LAND CORNER RESTORATION FOR U.S. PUBLIC LAND SURVEY MONUMENT RECORD

State of Wisconsin } ss. County of Oneida

I William E. Bandow, do hereby certify that on the 23rd day of February, 1983, I found evidence of the North 1/4 corner of Section 36 Township 37 North, Range 8 East, Fourth Principal Meridian, as described hereon; and that from this evidence I established a new monument and accessories as described hereon to perpetuate the original location of this corner:

Description of original monument and accessories and subsequent restorations:

Corner by William Daugherty in July, 1863. West between 25 & 36, 39.92. Set 1/4 post. BT's Y. Pine 20" N89W 76lks, Y. Pine 20" S79W 89lks. March 1903 D.H. Vaughan found stumps of both original BT's. Set iron pin & remarked BT stumps. July 1913 D.H. Vaughan found iron pipe at corner. August, 1930 H.C. Hall at 1/4 corner in center of road. All BT's gone. June, 1931 H.C. Hall found 1/4 corner and set iron pipe 24.75' westerly of corner. June, 1978 John Fisher at corner and made two BT's. N. Pine 10" S52W 37.5', N. Pine 6" N34W 40.6'. Corner was 1 1/4" iron pipe.

Description of corner evidence found:

Found 1 1/4" iron pipe in bituminous pavement. Fisher's NW tree ok. SW tree cut down.

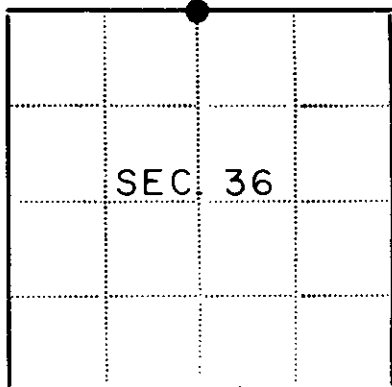
Description of monument and accessories I established to perpetuate the location of this corner:

Iron pipe remains in place. Made the following BT's: 4" oak S65E 59.05', 4" W. Pine S26W 57.90', iron pipe West 27.25', 8" N. Pine N34W 40.55'. Distance to trees is measured to PK nail in face blaze.



Compared with all Record Data & Accepted as correct.

Robert F. Harvick, Oneida County Surveyor 27 Apr 1983



Legend: ● - Corner monument restored, □ -

Resident witnesses.....

Dated at Rhinelanders Wisconsin, this 24th day of February 1983

Signature William E. Bandow Title Registered Surveyor (County Surveyor, Registered Land Surveyor, or other duly authorized official)

Surveyors Registration No. S-1182

Office of..... County of.....

I hereby certify that the within instrument was filed in this office for record on the..... day of..... 19....., and was filed in Book No. Page No. of County Records.

Signature..... Title.....

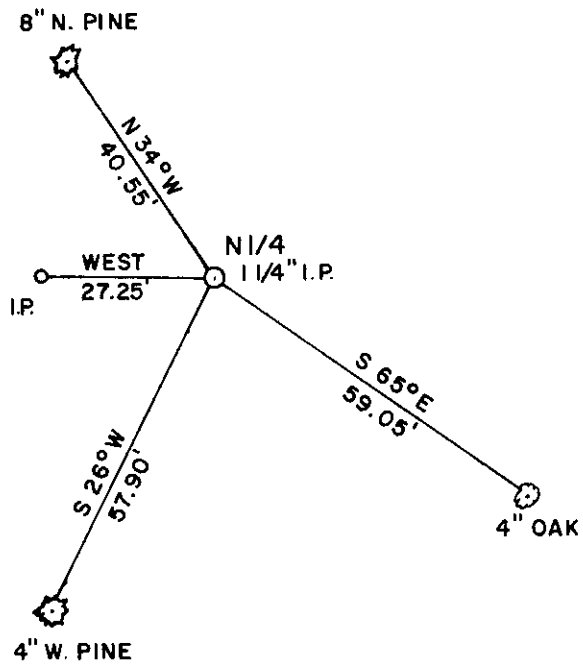
Township....., Range....., Section....., Index No....., Page No.....

3708250020

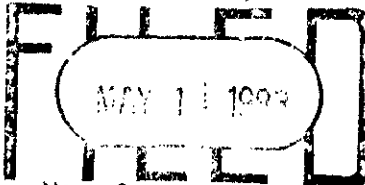
V-23

CORNER TIES, N1/4 SEC. 36-37-8

NOTE: DISTANCES TO PK IN FACE OF BLAZE.



REGISTER OF DEEDS OFFICE
ONEIDA COUNTY, WIS.



At 4:15 O'Clock P.M.
DORIS VERAGE KUEHN
REGISTER OF DEEDS

U.S. PUBLIC LAND SURVEY MONUMENT RECORD

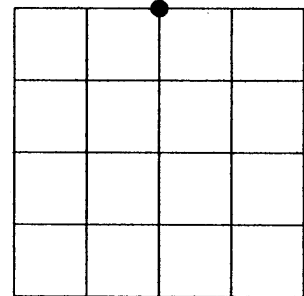
Note: This form is intended and designed to fulfill all requirements of the Wisconsin Administrative Code, Chapter A-E 7.08 U.S. Public Land Monument Record (3)(a)(b)(c)(d)(e)(f)(g)(h)(i). An additional sheet may be added if necessary to conform with said requirements.

(a) CORNER LOCATION:

north quarter corner of Section 36
 Township 37 North
 Range 8 East
 Town of Pine Lake
 County of Oneida

COORDINATES

North:
 East:
 Control Station:
 Latitude:
 Longitude:
 Datum Method



SECTION 36

(b) HISTORY OF ORIGINAL CORNER ESTABLISHMENT

Original Surveyor: W. Daugherty
 Date of Survey: Commenced July 1863
 Completed July 1863

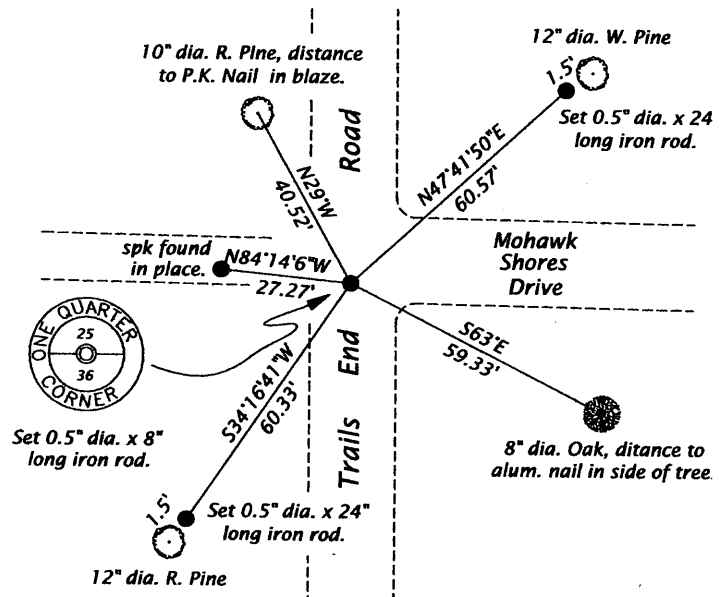
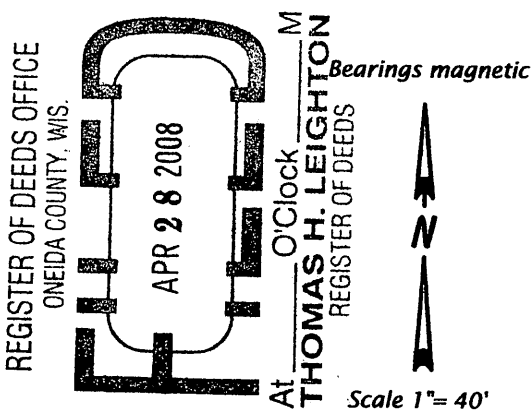
Original B.T.'S
 Y. Pine 20" dia., N89°W 76 links
 Y. Pine 20" dia., S79°W 89 links

(f)(g)(h) DESCRIPTION OF MONUMENT FOUND AT THIS CORNER AND IF IT WAS ACCEPTED, STATE ALL EVIDENCE (MATERIAL, TESTIMONIAL, OCCUPATIONS, PLATS, RECORDS, OTHER MONUMENTS) USED AS A BASIS FOR ESTABLISHING LOCATION. IF NOT ACCEPTED OF IF NOTHING WAS FOUND, STATE EVIDENCE USED AS BASIS FOR ESTABLISHING LOCATION. IF REESTABLISHED THROUGH LOST CORNER PROPORTIONATE METHODS, INDICATE ALL MONUMENTS, DISTANCES AND DIRECTIONS USED TO ESTABLISH. INDICATE TYPE OF MONUMENT AND SIGN POST FOUND OR SET.

See previous U.S. Public Land Survey Monument Record V-23 by William E. Bandow, dated February 24th, 1983.

Michael L. Oestreich: May 19th, 2006, I recovered an existing spike in the pavement of Trails End Road. Because of proposed road construction I made new ties to the existing bearing trees and witness objects as shown in the plan below. After completion of the road construction project, I revisited the corner and set a 0.5" dia. x 8" long iron rod to replace the previous spike which was removed during the road construction.

(c)(d)(e) PLAN VIEW OF CORNER WITH TIES TO AT LEAST 4 WITNESS MONUMENTS. IF IN DISAGREEMENT WITH PREVIOUSLY ESTABLISHED CORNER, SHOW THE DISTANCE BETWEEN THE TWO CORNERS AND ALSO INDICATE THE TIES TO THE DISPUTED CORNER.



(i) I, MICHAEL L. OESTREICH, REGISTERED LAND SURVEYOR NO. S-2118 HEREBY CERTIFY THAT THE CORNER LOCATION ON THIS RECORD WAS DETERMINED BY ME OR UNDER MY DIRECTION AND CONTROL AND THAT THIS U.S. PUBLIC LAND SURVEY MONUMENT RECORD IS CORRECT AND COMPLETE TO THE BEST OF MY KNOWLEDGE AND BELIEF.

Michael L. Oestreich
 SIGNATURE 4/22/08
 DATE



3708250020

INDEX NO. V-23