

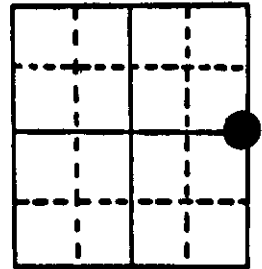
# U.S. PUBLIC LAND SURVEY MONUMENT RECORD

**Note:** This form is intended and designed to fulfill all requirements of Wisconsin Administrative Code, Chapter A-E 5.02, U.S. Public Land Survey Monument Record (3) (a) (b) (c) (d) (e) (f) (g) (h) (i). An additional sheet may be added if necessary to conform with said requirements.

(a) Corner location: Township 37 North  
 Range 8 East/West

Town/City/Village Newbold

County Oneida

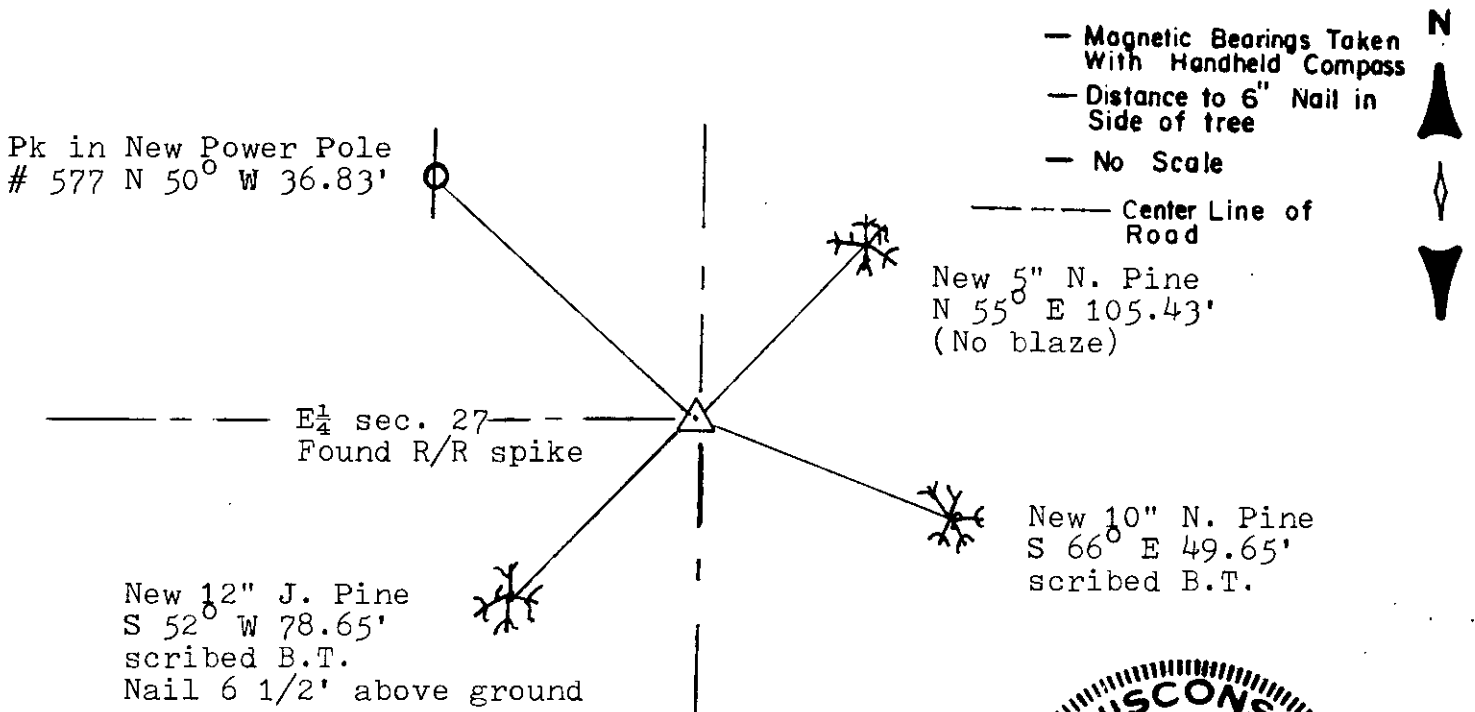


Section 27

(b) (f) (g) (h) Description of monument found at this corner and if it was accepted, state all evidence (material, testimonial, occupational, plats, records, other monuments) used as a basis for accepting. If not accepted or if nothing was found, state evidence used as basis for establishing location. If reestablished through lost corner proportionate methods, indicate all monuments, distances and directions used to establish.

- 1863 W.E. Daugherty established original corner. . . . 4.00 leave marsh, 40.00 set  $\frac{1}{4}$  Sec. Post Blk. Pine 8 S 27 E 11; Blk. Pine 10 N 44 W 18.
- 1902 D.H. Vaughan found W  $\frac{1}{4}$  26 original trees nearly gone New B.T. Y Pine stp. 18 S 46 E 85, ran North 41.48 to N.W. cor. 26.
- 1908 D.H. Vaughan ran from N.W. cor. 26 South 41.90 to W  $\frac{1}{4}$  26, found tree he marked in 1902 ran South 41.35 to S.W. cor. 26 corrected line North for road.
- 1931 H.C. Hall states 2 Rod Road to be staked on E-W  $\frac{1}{4}$  line Westerly from E  $\frac{1}{4}$ , located original E  $\frac{1}{4}$  S. 27 tipped over stump of Blk. Pine, did not find Vaughans Y. Pine stp. Drove car axle with gear attached for  $\frac{1}{4}$  corner falls in west Rut. Witnesses Y. Pine Stump 18 A 27  $\frac{1}{4}$  E .90<sup>o</sup> ch; Blk. Pine 5" S 15 W 1.74; fence corner N 49 W .36; fence corner N 63 E .50<sup>o</sup>.
- 1976 Sy Poskie recovered corner, power pole N 48 W 33.3'.
- 1987 I recovered a R/R spike 4' west of center line of road and on extension of the center line Richardson Road. This position checks with Halls Description so I witnessed it as shown below.

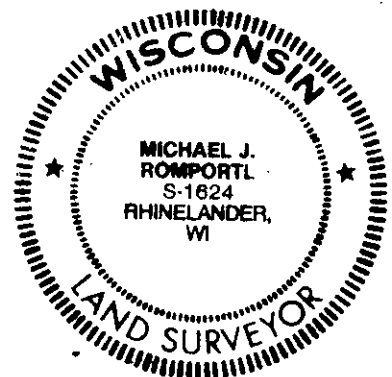
(c) (d) (e) Plan view of corner with ties to at least 4 witness monuments. If in disagreement with previously established corner, show the distances between the two corners and also indicate the ties to the disputed corner.



(i) I, Michael J. Romportl  
 (type or print name) certify that the corner location on this record was determined by me or under my direction and control and that this U.S. Public Land Survey Monument Record is correct and complete to the best of my knowledge and belief.

Michael J. Romportl 12/30/87  
 Signature Date

GENISOT & ASSOCIATES INC.  
 1512 EAGLE ST., RHINELANDER, WIS.



Index No. 117

3708272000