

REGISTER OF DEEDS OFFICE  
ONEIDA COUNTY, WIS.  
JAN 18 1999  
THOMAS H. LEIGHTON  
REGISTER OF DEEDS  
Recorders Data

**U.S. PUBLIC LAND SURVEY MONUMENT LOCATION RECORD**

CORNER: West MC SECTION: 33 TOWNSHIP 37 NORTH RANGE 8 EAST WEST

FOR M.C. CORNER INDICATE: NAME OF WATERWAY Flannery Lake SECTION LINE North

~~CITY/VILLAGE~~ (TOWN) OF: Newbold COUNTY OF: Oneida

Description of monument found or placed and all other evidence used as a basis for monument location; including all monuments and related measurements required if the corner location is reestablished by lost corner proportionate methods. Also indicate name of original surveyor, survey date, corner monument set and established bearing trees, witness or reference monuments with ties from available records.

Found and accepted a standard 2" O.D. iron pipe monument with stamped 1927 GLO brass cap undisturbed 5" above grade and 6" South of center of East/West woven wire fence gate and 16½' West of existing lake shoreline.

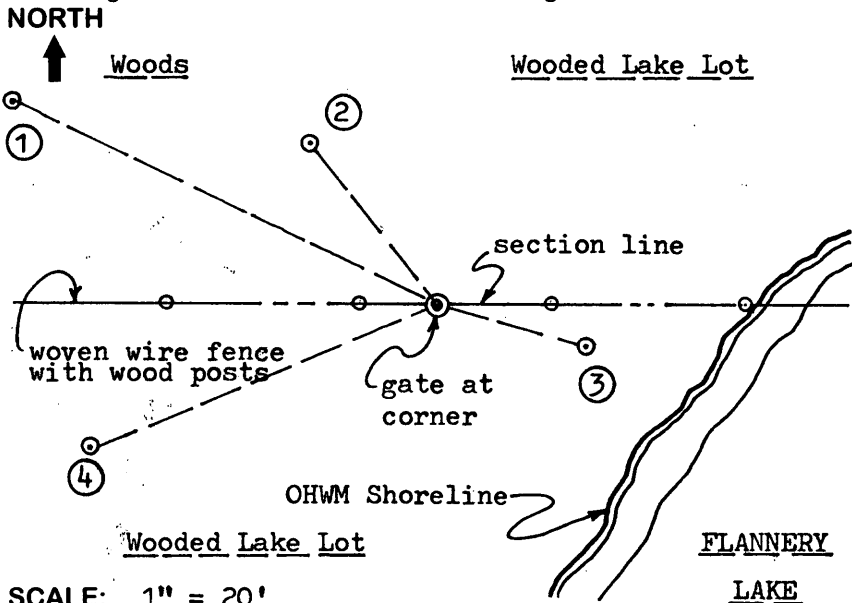
In 1863, Daugherty/GLO set a wood post as original MC and marked OBTs, an 8" Aspen S20°W 24 lks and an 8" Or N45°W 18 lks; all now obliterated, Oak OBT may now be clump regrowth.

In 1927, Harrington/GLO found and accepted remains of an old decayed wood stake at this MC, and replaced it with a standard 2" O.D. iron pipe monument with stamped GLO brass cap 10" above grade, and noted he found stump of Or OBT N45°W 18 lks with no marks; and he marked new BTs a 16" Pw N64°15'E 79 lks Mkd "S28 MCBT", now a low cut decayed Pw stump on lake shoreline, and he also marked a new 16" Pw BT S19°45'W 75 lks mkd "S33 MC BT", now gone.

In 1977, Schmit/Timberland Surveyors noted this corner as a 2" U.S.G.L.O. brass capped iron pipe at MC on west shore of Flannery Lake, per his Plat of Survey filed as C-244 in Oneida County records.

This recovery completed September 29, 1998; there were no witnesses.

Plan view map of monument location with bearing and distance ties to a minimum of four(4) described witness or reference monuments of concrete, natural stone, iron, live bearing trees or equivalent material. If applicable, also show a minimum of two(2) bearing and distance ties to any other monument found and not accepted; including the bearing and distance from the accepted monument. Indicate the basis for bearings of reference ties if not referenced to magnetic north.



**WITNESS MONUMENT TIES:**

- ① New BT 12" Or N64°W 24.55'.
- ② Old BT SE 13" trunk of 8 Or clump N38°W 10.70'; blazes shut & plain.
- ③ Old BT North 10" trunk of 3 Mr; S74°E 7.99' to PK/washer in left face; lower blaze open.
- ④ New BT 14" Or S68°W 19.64'.

Note: Standard white poly 'T' marker post set 1.7' East of corner along East side of East wood gate post.

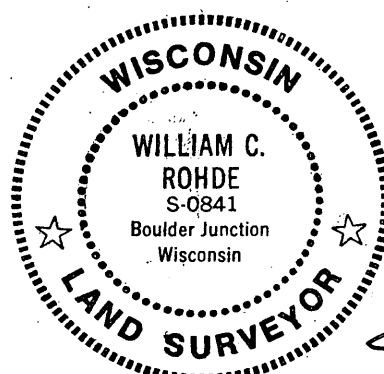
SCALE: 1" = 20'

Unless otherwise indicated, all bearing tree ties are to a .25" dia. by 2.5" long PK nail with a 1.25" dia. steel washer driven into unblazed right face and a .25" dia. by 2.5" long PK nail with a 2" dia. steel washer stamped 'BT' is also driven into unblazed face of bearing tree at DBH; the basis for measured bearings is magnetic to nearest degree and all tie distances are horizontal measure to nearest 1/100th feet.

**LAND SURVEYOR CERTIFICATION:**

I, William C. Rohde, hereby certify that I am a duly licensed Professional Land Surveyor in Wisconsin, that this USPLS monument location was determined by me or under my direction and control, and that this U.S. Public Land Survey Monument Location Record is true and correct to the best of my knowledge and belief.

*William C. Rohde* Date: 01-11-99  
Signature



RLS SEAL

		33	

SECTION LOCATION MAP

INDEX NO. 3708280023

SHEET NO. 1 OF 1

This form is intended to fulfill requirements of Chapter A-E 7.08 (3)(a)(b)(c)(d)(e)(f)(g)(h)(i) U.S. Public Land Survey Monument Location Record, Wisconsin Administrative Code. Use reverse side for geodetic location data and/or continuation purposes.

INDEX NO. V 11-12