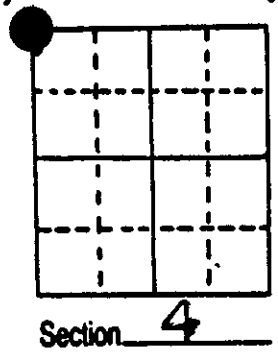


# U.S. PUBLIC LAND SURVEY MONUMENT RECORD

Note: This form is intended and designed to fulfill all requirements of Wisconsin Administrative Code, Chapter A-E 5.02, U.S. Public Land Survey Monument Record (3) (a) (b) (c) (d) (e) (f) (g) (h) (i). An additional sheet may be added if necessary to conform with said requirements.

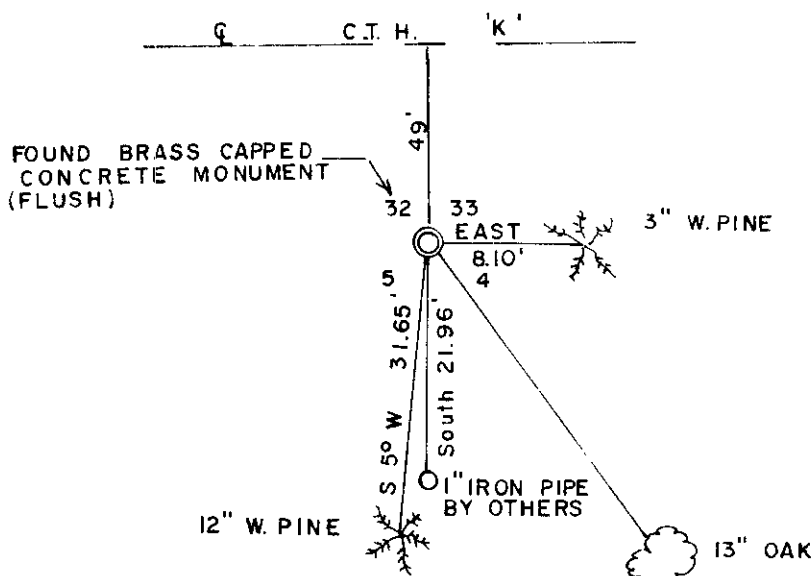
(a) Corner location: Township 36 North  
 Range 8 East ~~West~~  
 Town/City/Village CRESCENT  
 County ONEIDA



(b) (f) (g) (h) Description of monument found at this corner and if it was accepted, state all evidence (material, testimonial, occupational, plats, records, other monuments) used as a basis for accepting. If not accepted or if nothing was found, state evidence used as basis for establishing location. If reestablished through lost corner proportionate methods, indicate all monuments, distances and directions used to establish.

- 1860 Alferd Millard established original corner 4-5-32-33, B.T.s Aspen 6 S 57 E 11; Aspen 6 N55E 12; W. Birch 7 S46W 22; W. Birch 6 N7W 19
- 1911 D.H. Vaughan measures east 40.10 from corner, measures west 40.17 from corner for road.
- 1925 D.S. Burnett with Clayton Vaughan at corner
- 1927 Earl G. Harrington a cadastral engineer with the General Land Office found a wooden stake, no evidence of the original corner or bearing trees could be found, appears that the wooden stake has always been the true point for the corner and therefor he accepted it as the best available evidence for the corner, the corner falls on the south side of state highway, no new bearing trees
- 1962 R.E. Badow found G.L.O. monument at corner
- 1969 J. Mairtinson project engineer with the department of transportation found a 2" capped U.S.G.L.O. pipe for the corner 49.2' south of center line "K", replaced pipe with a State Highway Department brass capped concrete monument.
- 1986 I found the State Highway brass capped monument and witnessed it as shown below.

(c) (d) (e) Plan view of corner with ties to at least 4 witness monuments. If in disagreement with previously established corner, show the distances between the two corners and also indicate the ties to the disputed corner.



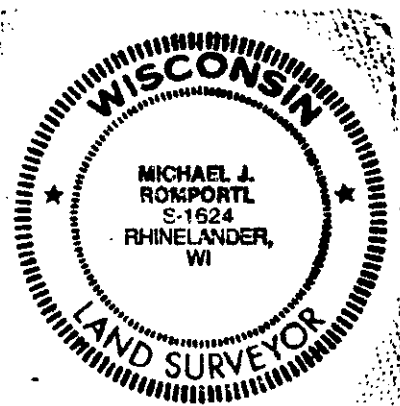
- Magnetic Bearings Taken With Handheld Compass
- Distance to 6" Nail in Side of tree
- No Scale

REGISTER OF DEEDS OFFICE  
 ONEIDA COUNTY, WIS.  
**FILED**  
 APR 3 1987  
 At 4:00 O'Clock P.M.  
 DEB J VERABE KUEHN  
 REGISTER OF DEEDS

(i) I, MICHAEL J. ROMPORTL R.L.S. 1624  
 (type or print name) certify that the corner location on this record was determined by me or under my direction and control and that this U.S. Public Land Survey Monument Record is correct and complete to the best of my knowledge and belief.

Michael J. Romportl 3-30-87  
 Signature Date

GENISOT & ASSOCIATES INC.  
 1512 EAGLE ST., RHINELANDER, WIS.



Index No A-9

3708320000