

CERTIFIED LAND CORNER RESTORATION

State of Wisconsin

County of Oneida

ss.

I John H. Fisher, do hereby certify that on the 17 day of September, 19 77, I found evidence of the south one quarter corner of Section 32 Township 37N, Range 8E, Fourth Principal Meridian, as described hereon; and that from this evidence I established a new monument and accessories as described hereon to perpetuate the original location of this corner:

Description of original monument and accessories and subsequent restorations:

The original Gov't. survey was performed by Alfred Millard in August 1860.

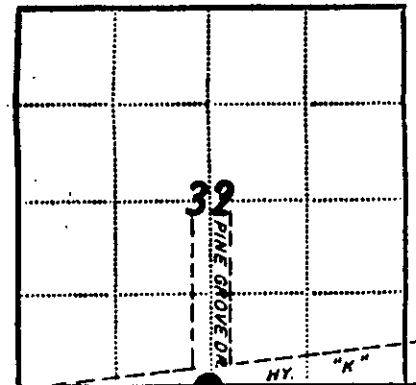
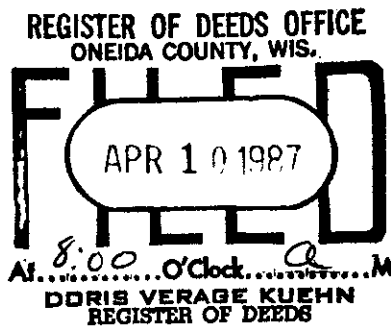
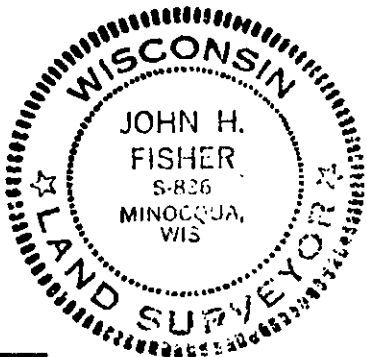
- Set wood post
- 5" Aspen S41°E, 10 links
- 14" Yellow Pine S48°W, 87 links

Description of corner evidence found:

None

Description of monument and accessories I established to perpetuate the location of this corner:

- Proportioned corner and set Oneida County Berntsen monument
- 8" White Pine N36°E, 78.0 feet
- 6" Maple N20°W, 45.5 feet



Resident witnesses None

Dated at Minocqua Wisconsin, this 16<sup>th</sup> day of October 19 77

Signature John H. Fisher Title Registered Land Surveyor  
(County Surveyor, Registered Land Surveyor, or other duly authorized official)

Surveyors Registration No. S-836

Office of \_\_\_\_\_ County of \_\_\_\_\_

I hereby certify that the within instrument was filed in this office for record on the \_\_\_\_\_ day of \_\_\_\_\_ 19 \_\_\_\_\_, and was filed in Book No. \_\_\_\_\_ Page No. \_\_\_\_\_ of County Records.

Signature \_\_\_\_\_ Title \_\_\_\_\_

Township \_\_\_\_\_, Range \_\_\_\_\_, Section \_\_\_\_\_, Index No. \_\_\_\_\_, Page No. \_\_\_\_\_

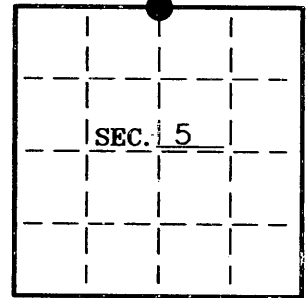
This is a copy of a copy. orig. is lost. mgr.

3708320020

**U. S. PUBLIC LAND SURVEY MONUMENT RECORD**

Note: This form is intended and designed to fulfill all requirements of Wisconsin Administrative Code—Chapter A-E 7.08 U. S. Public Land Survey Monument Record (3)(a)(b)(c)(d)(e)(f)(g)(h)(i). An additional sheet may be added if necessary to conform with said requirements.

(a) CORNER LOCATION: Oneida County Coordinates  
N 1/4 corner of Sec. 5 N = 167455.122  
 Township 36 North E = 235514.000  
 Range 8 East Datum Base Oneida Co. Grid  
 Town Crescent County of Oneida



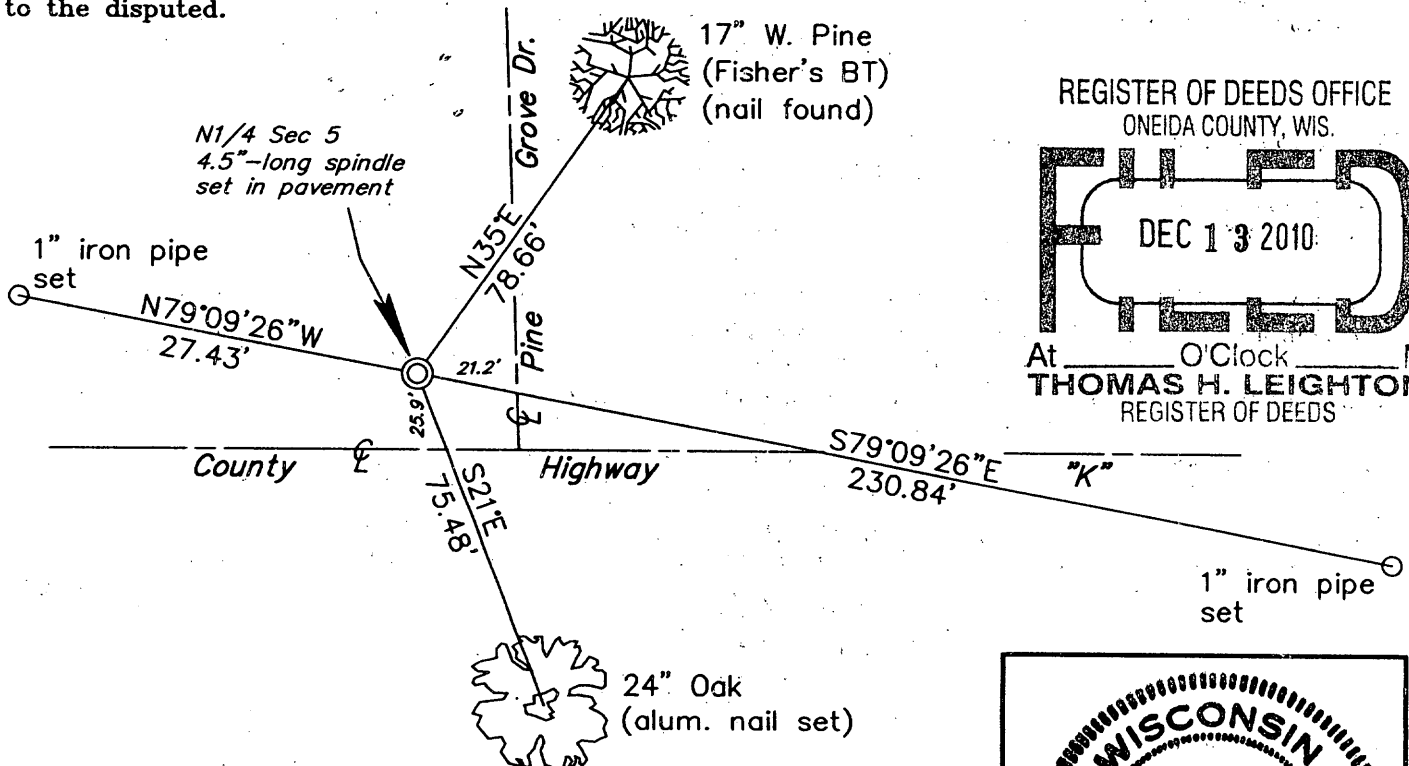
(b) HISTORY OF ORIGINAL CORNER ESTABLISHMENT:  
 Original Surveyor: Alfred Milard  
 Date of Survey: Commenced August, 1860  
 Completed September, 1860

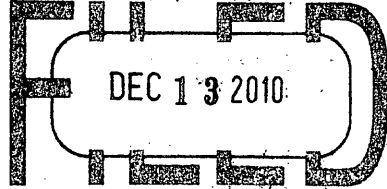
Original B.T.'S  
 5" Aspen, S46°E, 10 lks  
 14" Y. Pine, S48°W, 87 lks

(b)(f)(g)(h) Description of monument found at this corner and if it was accepted—state all evidence (material—testimonial—occupation—plats—records—other monuments) used as a basis for accepting. If not accepted or if nothing was found state evidence used as basis for establishing location. If reestablished through lost corner proportionate methods indicate all monuments—distances and directions used to establish. Indicate type of monument and sign post found or set.

- 1860 - Alfred Milard set quarter section post.
- 1962 - Northwoods Surveyors show a monument at the N1/4 location, (see Oneida County Surveyor's Map #B4245).
- 1972 - Arvin Hess shows an iron pipe at the corner location (see #B593).
- 1979 - John Fisher proportioned the corner and set an Oneida County Berntsen monument. He witnessed the mon. with an 8" W. Pine, N36°E, 78.0' and a 6" Maple, N20°W, 45.5', (see Certified Land Corner Restoration dated Oct. 16, 1979).
- 1996 - Todd Loftus shows a subdivisional monument found at the corner location, (see Certified Survey Map #1914).
- 1997 - Oneida County Land Information Dept. contracted with Aero-Metric, Inc. to establish GPS coordinates on the corner and the records indicate they recovered a "painted over cap".
- 2001 - Russell Brown shows a found alum. monument at the corner location, (see Oneida County Certified Survey Maps #2577 and #2578).
- 2010 - Due to road construction, the corner was knocked out. We reset the corner using the previously established GPS coordinates, (see Certified Survey Maps #3822 and #3823), and witnessed the corner as shown below.

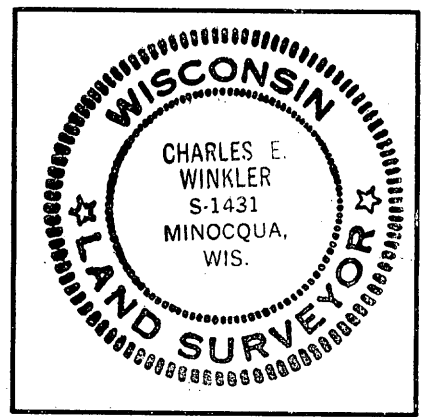
(c)(d)(e) Plan view of corner with ties to at least 4 witness monuments. If in disagreement with previously established corner—show the distances between the two corners and also indicate the ties to the disputed.



REGISTER OF DEEDS OFFICE  
 ONEIDA COUNTY, WIS.  
  
 At O'Clock M  
**THOMAS H. LEIGHTON**  
 REGISTER OF DEEDS

(i) I Charles E. Winkler S-1431  
 hereby certify that the corner location on this record was determined by me or under my direction and control and that this U.S. Public Land Survey Monument Record is correct and complete to the best of my knowledge and belief.

Charles E. Winkler 12/8/2010  
 Signature Foltz and Associates, Inc. Date



INDEX NO. A-7

3708320020