

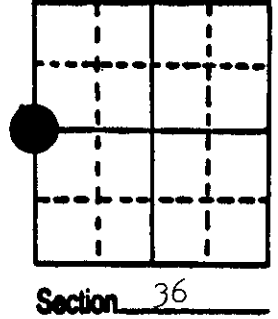
# U.S. PUBLIC LAND SURVEY MONUMENT RECORD

**Note:** This form is intended and designed to fulfill all requirements of Wisconsin Administrative Code, Chapter A-E 5.02, U.S. Public Land Survey Monument Record (3) (a) (b) (c) (d) (e) (f) (g) (h) (i). An additional sheet may be added if necessary to conform with said requirements.

(a) Corner location: Township 37 North  
 Range 8 East/West

Town/City/Village Newbold

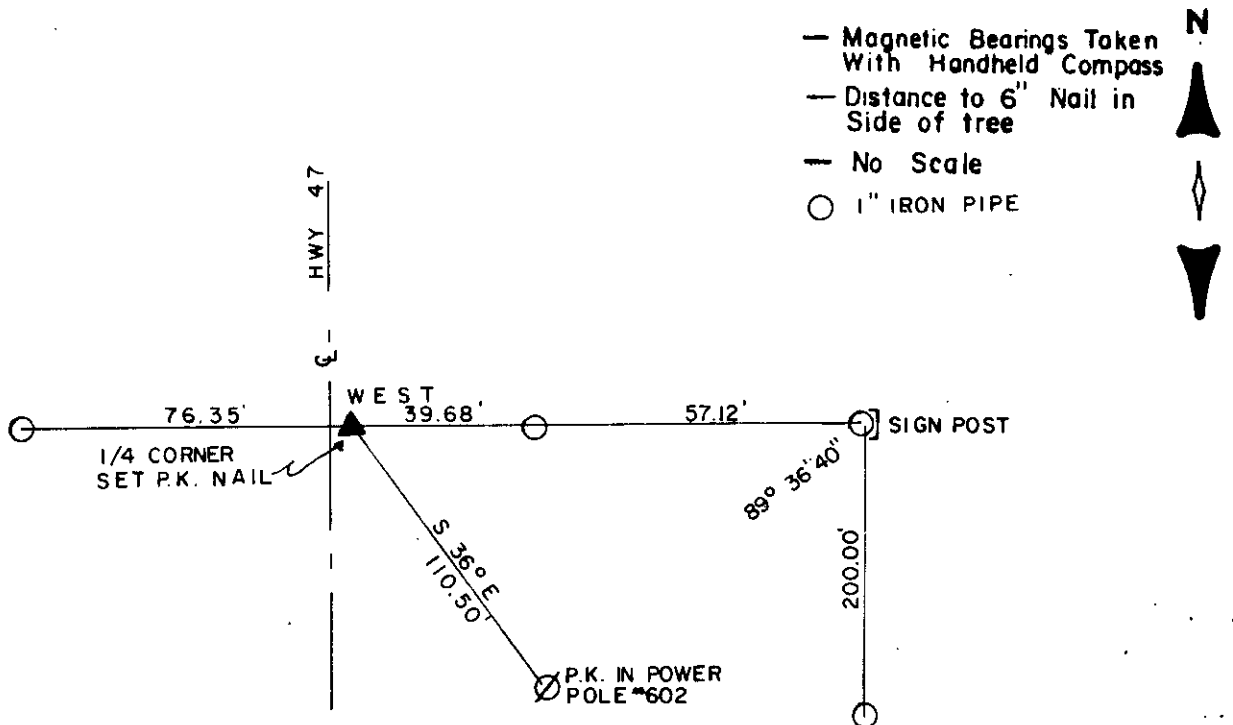
County Oneida



(b) (f) (g) (h) Description of monument found at this corner and if it was accepted, state all evidence (material, testimonial, occupational, plats, records, other monuments) used as a basis for accepting. If not accepted or if nothing was found, state evidence used as basis for establishing location. If reestablished through lost corner proportionate methods, indicate all monuments, distances and directions used to establish.

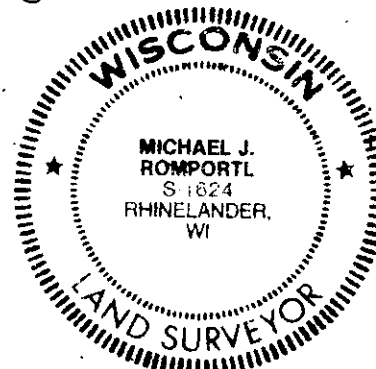
- 1863 W.E. Daughterty established original corner at 40.00 ch. B.T.s W. Pine 12 N 61 E 14 lks.; Y Pine 10 S 44 W 8 lks.
- 1908 D.H. Vaughan states he found E 1/4 Sec. 35 set by Dorr.
- 1911 D.H. Vaughan states he ran from E 1/4 Sec. 35 North 40.67 ch. to NE corner.
- 1913 D.H. Vaughan states he ran from E 1/4 Sec. 36 West to W 1/4 and found an iron pipe in center of new road.
- 1958 K. Hall indicates in S.T.H. 47 sets iron pipes and conc. monuments on E-W 1/4 line of Sec. 36.
- 1961 Sy Poskie recovers corner in road.
- 1987 I reestablished the corner from K. Halls and Sy Poskie surveys and witnessed it as shown below:

(c) (d) (e) Plan view of corner with ties to at least 4 witness monuments. If in disagreement with previously established corner, show the distances between the two corners and also indicate the ties to the disputed corner.



(i) Michael J. Romportl  
 (type or print name) certify that the corner location on this record was determined by me or under my direction and control and that this U.S. Public Land Survey Monument Record is correct and complete to the best of my knowledge and belief.

Michael J. Romportl 3/30/87  
 Signature Date  
 GENISOT & ASSOCIATES INC.  
 1512 EAGLE ST., RHINELANDER, WIS.



3705 252000