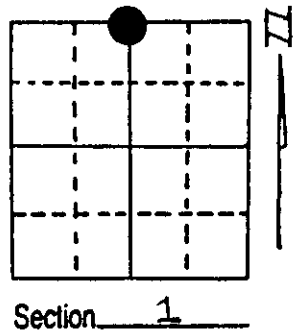


U.S. PUBLIC LAND SURVEY MONUMENT RECORD

Note: This form is intended and designed to fulfill all requirements of Wisconsin Administrative Code, Chapter A-E 7.08 U.S. Public Land Survey Monument Record (3) (a) (b) (c) (d) (e) (f) (g) (h) (i). An additional sheet may be added if necessary to conform with said requirements.

(a) Corner location: Township 36 North
 Range 8 East/West

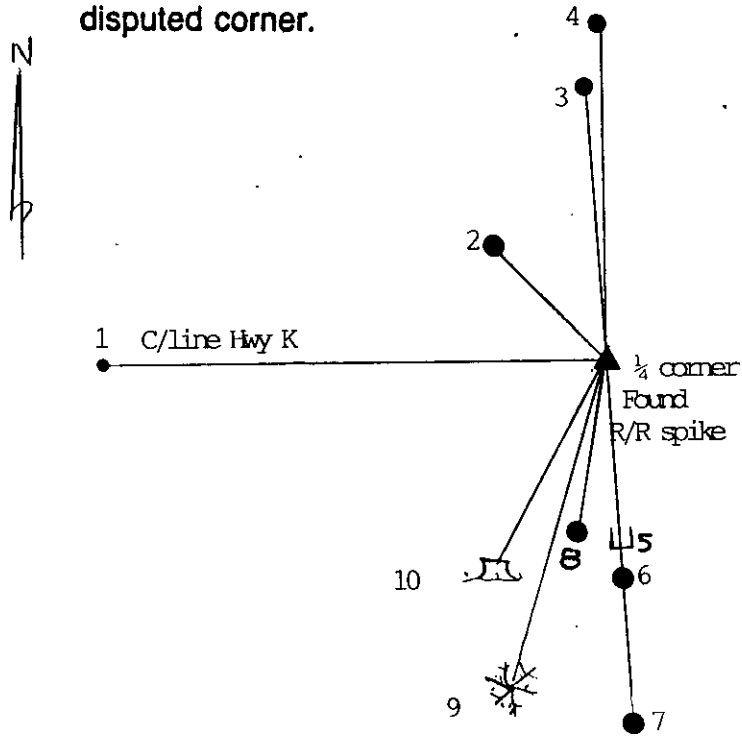


Town/City/Village Crescent
 County Oneida

(b) (f) (g) (h) Description of monument found at this corner and if it was accepted, state all evidence (material, testimonial, occupational, plats, records, other monuments) used as a basis for accepting. If not accepted or if nothing was found, state evidence used as basis for establishing location. If reestablished through lost corner proportionate methods, indicate all monuments, distances and directions used to establish. Indicate type of monument found or set and sign post.

- 1860 Alfred Millard established original corner @ 40.00ch B.T.S. Cedar 6 N55E 13 ; Cedar 10 S67 E17
- 1892 B.F. Dorr states from NE cor 1 West 39.69 Ch to N 1/4 1
- 1913 D.H. Vaughan states "S 1/4 P Found post & Stump of SE tree O.K. Run N 8.75 to center of C&NW R/R 16.00 flowage
- 1958 K. Hall indicates 1/4 in centerline of Roads and shows and iron pipe 470' North on 1/4 line on South R/W Line C&NW R/R distance to centerline R/R = 571.2
- 1958 Vol. 224 Page 253 Deeds calls for 1/4 corner and witness of a 12' Tamarack S28W 39.4; 1.P. S3-20E 35.6.
- 1963 Northwoods indicates a R/R spike in road for 1/4 cor. witnesses 12" Tamarack S30W 39.4; 6" Tamarack S16E 37.5
- 1970 Jean Resvick indicates R/R spike in road for 1/4 cor. Tamarack SW 38.87 Power pole SLY 23.82 Tamarack SE 41.61
- 1977 N. Loftus indicates R/R spike in road for 1/4 cor.
- 1988 DOT State Project # 9456-03-70 indicates R/R spike in Road for 1/4 cor. Witness SPK in 12" Tam SE 50.15; Spike in 10" Cedar NE 70.08
- 1988 I met with DOT construction personnel to witness the N 1/4 1-36-8 and record bearing & Distances to Witnesses from previous surveyors, we found the R/R spike in the road, the 12 Tamarack now a stump with scribing visible to the SW and Halls pipe to the North. After analyzing the Data I feel that the R/R spike represents the correct location for the 1/4 corner. We witnessed the corner as shows in the sketch.

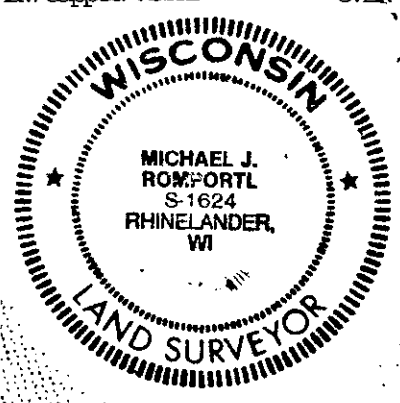
(c) (d) (e) Plan view of corner with ties to at least 4 witness monuments. If in disagreement with previously established corner, show the distances between the two corners and also indicate the ties to the disputed corner.



- 1) N 90-00-00W (DOT alignment bearing)
Existing PK nail at STA 32 + 00
(DOT Plans)
- 2) N44°-17' 35" W 55.75
3/4 Rebar found 0.4' E of DOT R/W post
- 3) N1° 35' 05" W 283.84'
Found 1 1/2" iron pipe on West R/W Line
Larsen Drive by K. Hall
- 4) N 0° 21' 12" W 470.46'
Found 1" iron pipe on South R/W Line of C&NW R/R
by K. Hall (Bent)
- 5) Set plastic sign post 1' North of witness corner
- 6) S 2° 43' 00" E 50.20'
Set 1/2" x 6" Aluminum capped Rebar
- 7) S 2° 43' 00" E 81.59'
Set 1/2" x 6" Aluminum capped Rebar

(i) Michael J Romportl
 (type or print name) certify that the corner location on this record was determined by me or under my direction and control and that this U.S. Public Land Survey Monument Record is correct and complete to the best of my knowledge and belief.

Michael J Romportl 8-5-88
 Signature Michael J. Romportl Date
 Oneida County Surveyor



Index No. A-23

3708360020

Stock No. 26273

Continued (C) (D) (E)

8) S 13° 50' 25" W 29.81'
3/4" iron Pipe found9) S 17° 27' 05" W 60.26'
DOT Bench mark bearing & Distance to head of spike
in 10" Balsam10) S 29° 25' 50" W 39.33'
Found stump with blaze & scribing visible bearing &
distance to face, apparently Halls B.T. and used by
Northwoods

Notes:

- Bearings & Distances given are from R/R Spike to witness
- Sketch not to scale
- Bearing for Items 1-10 Referenced to DOT project #9456-03-07 Alignment angles were turned with a Wild T1 instrument & Distances measured with a Bette 1600S
- Tie to NE witness as shown on project Plans indicates 70.08, We measured 71.08, SE Tie O. K.

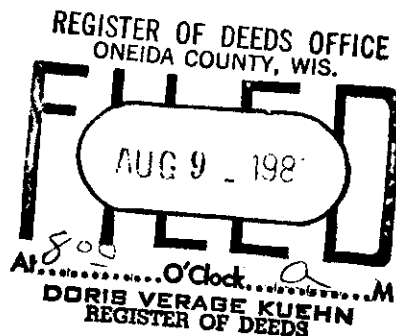
Witness Ties

7 to 2 N 19° - 25' - 10" W 128.73

2 to 3 N 7° 15' 50" E 245.80

3 to 6 S 1° 45' 20" E 334.03

6 to 7 S 2° 43' 00" E 31.39



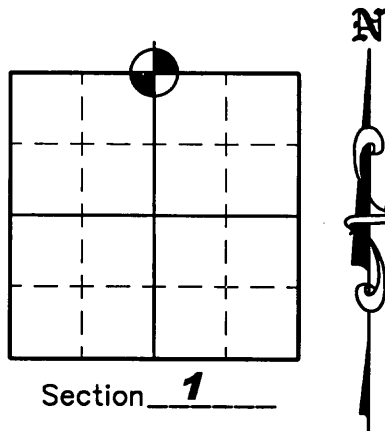
U.S. PUBLIC LAND SURVEY MONUMENT RECORD

NOTE: This form is intended and designed to fulfill all requirements of Wisconsin Administrative Code, Chapter A-E 7 .08 U.S. Public Land Survey Monument Record (3)(a)(b)(c)(d)(e)(f)(g)(h)(i). An additional sheet may be added if necessary to conform with said requirements.

(a) Corner location: Township 36 North
Range 08 East

Town of CRESCENT

County of ONEIDA



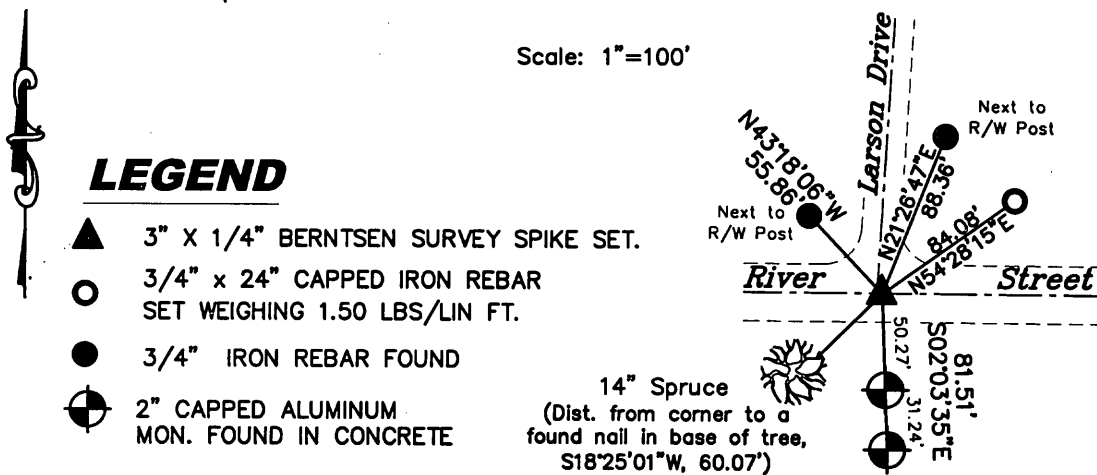
(b)(f)(g)(h) Description of monument found at this corner and if it was accepted, state all evidence (material, testimonial, occupation, plats, records, other monuments) used as a basis for accepting. If not accepted or if nothing was found, state evidence used as a basis for establishing location. If reestablished through lost corner proportionate methods, indicate all monuments, distances and directions used to establish. Indicate type of monument found or set and sign post.

1988 - Mike J. Romportl found a Railroad Spike in the centerline of River Street and set new witness corners - See U.S.P.L.S. Monument Record dated August 5, 1988.

May 16, 2006 - Due to road construction Nicolet Surveyors, Inc. was contacted by the Oneida County Land Information Office to preserve the location of this survey marker. Jonathan W. Dulin found a P.K. nail at the centerline of River Street. We also found two 2-1/2" aluminum capped reference monuments, 2 3/4" iron rods and a 14" Spruce BT with a nail in the side. We set 1 new reference corner as shown below.

Aug 8, 2006 - After road construction we set a Berntsen survey nail at this location.

(c)(d)(e) Plan view of corner with ties to at least 4 witness monuments. If in disagreement with previously established corner, show the distances between the two corners and also indicate the ties to the disputed corner.



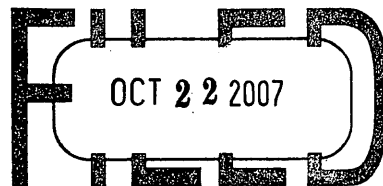
(i) I, Jonathan W. Dulin, certify that the corner location on this record was determined by me under my direction and control and that this U.S. Public Land Survey Monument is correct and complete to the best of my knowledge and belief.

Signature



Date 10-8-2007

REGISTER OF DEEDS OFFICE
ONEIDA COUNTY, WIS.



At _____ O'Clock _____ M
THOMAS H. LEIGHTON
REGISTER OF DEEDS

3708360020

Index No. A-23

U.S. PUBLIC LAND SURVEY MONUMENT RECORD

DEC 12 2017

Note: This form is intended and designed to fulfill all requirements of the Wisconsin Administrative Code, Chapter A-E 7.08 U.S. Public Land Monument Record (3)(a)(b)(c)(d)(e)(f)(g)(h)(i). An additional sheet may be added if necessary to conform with said requirements.

AT _____ O'CLOCK _____ M
KYLE J. FRANSON
REGISTER OF DEEDS

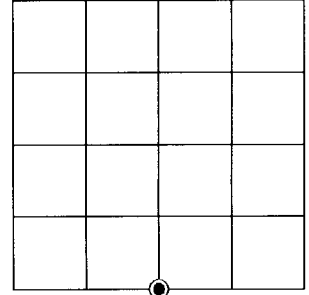
(a) CORNER LOCATION:

South Quarter Corner of Section 36
Township 37 North
Range 8 East
Town of Newbold
County of Oneida

North:
East:
Datum:
GNSS Method:
GNSS Control:

(RECORDING AREA)

SECTION 36



(b) HISTORY OF ORIGINAL CORNER ESTABLISHMENT

Original Surveyor:
Date of Survey: Commenced _____
Completed _____
Original B.T.'S _____

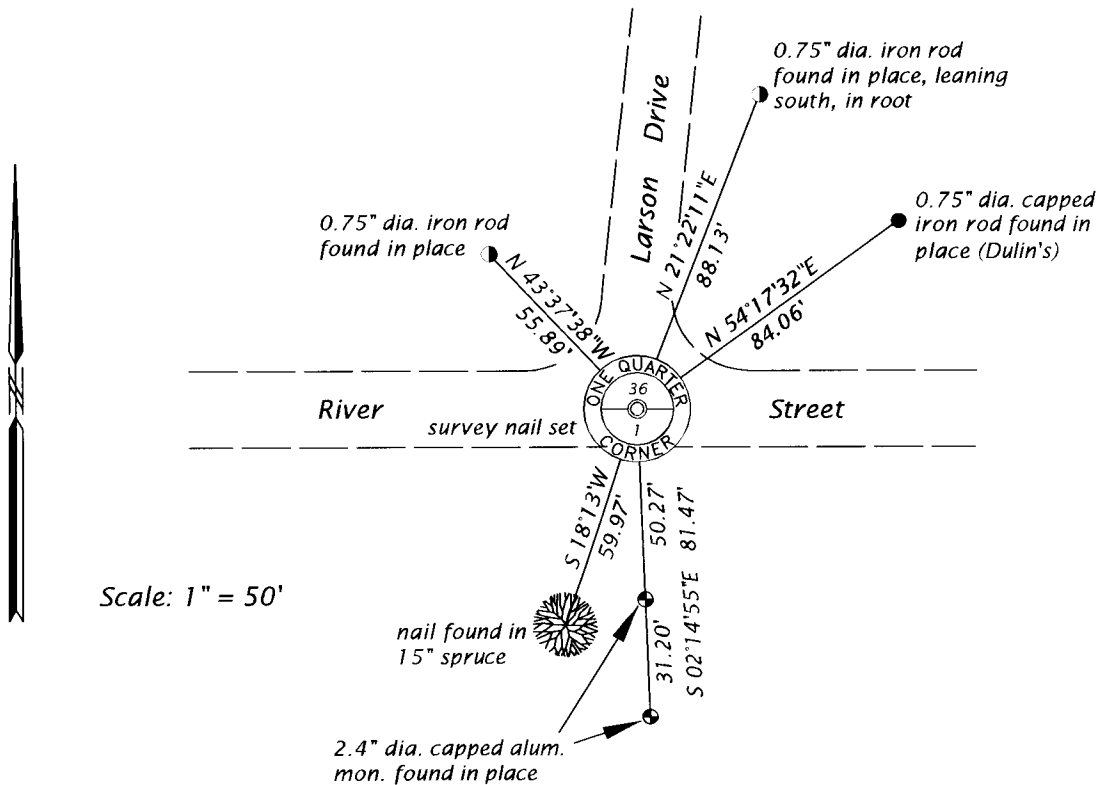
*SEE PREVIOUS U.S.P.L.S. MONUMENT
RECORD DATED OCTOBER 8, 2007.*

(f)(g)(h) DESCRIPTION OF MONUMENT FOUND AT THIS CORNER AND IF IT WAS ACCEPTED, STATE ALL EVIDENCE (MATERIAL, TESTIMONIAL, OCCUPATIONAL, PLATS, RECORD, OTHER MONUMENTS) USED AS A BASIS FOR ESTABLISHING LOCATION. IF NOT ACCEPTED OR IF NOTHING WAS FOUND, STATE EVIDENCE USED AS BASIS FOR ESTABLISHING LOCATION. IF REESTABLISHED THROUGH LOST CORNER PROPORTIONATE METHODS, INDICATE ALL MONUMENTS, DISTANCES AND DIRECTIONS USED TO ESTABLISH. INDICATE TYPE OF MONUMENT AND SIGN POST FOUND OR SET.

This is a perpetuation of a previous U.S.P.L.S. Monument Record by Jonathan W. Dulin, RLS, dated October 8, 2007, and filed in the office of the Oneida County Register of Deeds. A complete history of the corner can be found on the previous monument record. I accept the previous location as a true and faithful perpetuation or reestablishment of the original corner location and further perpetuate it as follows.

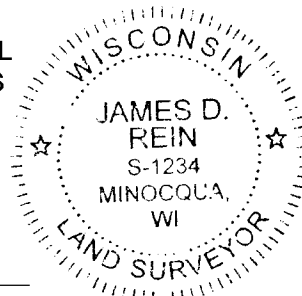
November 7, 2017, James D. Rein, P.L.S. No. S-1234, due to highway resurfacing, did not find the survey nail set by Dulin in 2007. We reset a survey nail in the pavement at the corner position using existing witnesses. See below for updated ties.

(c)(d)(e) PLAN VIEW OF CORNER WITH TIES TO AT LEAST 4 WITNESS MONUMENTS. IF IN DISAGREEMENT WITH PREVIOUSLY ESTABLISHED CORNER, SHOW THE DISTANCE BETWEEN THE TWO CORNERS AND ALSO INDICATE THE TIES TO THE DISPUTED CORNER.



Scale: 1" = 50'

(i) I, JAMES D. REIN, PROFESSIONAL LAND SURVEYOR NO. S-1234 HEREBY CERTIFY THAT THE CORNER LOCATION ON THIS RECORD WAS DETERMINED BY ME OR UNDER MY DIRECTION AND CONTROL AND THAT THIS U.S. PUBLIC LAND SURVEY MONUMENT RECORD IS CORRECT AND COMPLETE TO THE BEST OF MY KNOWLEDGE AND BELIEF.



[Handwritten Signature]
SIGNATURE

12-06-17
DATE

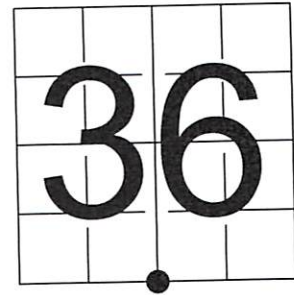
INDEX NO. Z - 23
3708360020

U S PUBLIC LAND SURVEY MONUMENT RECORD

NOTE: This form is intended and designed to fulfill all requirements of Wisconsin Administrative Code, Chapter A-E 7.08 U.S. Public Land Survey Monument Record (3) (a-i)

(a) CORNER LOCATION
 SOUTH 1/4 CORNER OF SECTION 36
 TOWNSHIP 37 NORTH
 RANGE 08 EAST OF THE 4TH PM
 TOWN OF NEWBOLD
 COUNTY OF ONEIDA

WISCORS - ONEIDA COUNTY
 N: 167345.884 USft
 E: 256610.835 USft
 Datum: NAD83 (2011)
 GNSS Method RTN - Direct
 GNSS Control WISCORS VRS



(b) HISTORY OF ORIGINAL CORNER ESTABLISHMENT

Original Surveyor: See previous USPLS Monument Record
 Date of Survey: INDEX NO. A-23 - DATED: OCTOBER 8, 2007
 Original Accessories: 3708360020

(f)(g)(h) Description of monument found at this corner and if it was accepted, state all evidence (material, testimonial, occupational, plats, records, other monuments) used as a basis for accepting. If not accepted or if nothing was found, state evidence used as basis for establishing location. If re-established through lost corner proportionate methods, indicate all monuments, distances and directions used to establish. Indicate type of monument and sign post found or set.

AUGUST 5, 1988 - SURVEYOR 1624 - MICHAEL J. ROMPORTL FOUND AND ACCEPTED A RAILROAD SPIKE IN THE CENTERLINE OF RIVER STREET, AND ESTABLISHES NEW WITNESSES. SEE U.S.P.L.S. MONUMENT RECORD DATED AUGUST 9, 1988.

MAY 16, 2006 - SURVEYOR 2754 - JONATHON W. DULIN FOUND AND ACCEPTED P.K. NAIL AT THE CENTERLINE OF RIVER STREET AND FOUR OF ROMPORTL'S WITNESSES. DULIN SET ONE ADDITIONAL WITNESS. SEE U.S.P.L.S. MONUMENT RECORD A-23 DATED OCTOBER 22, 2007.

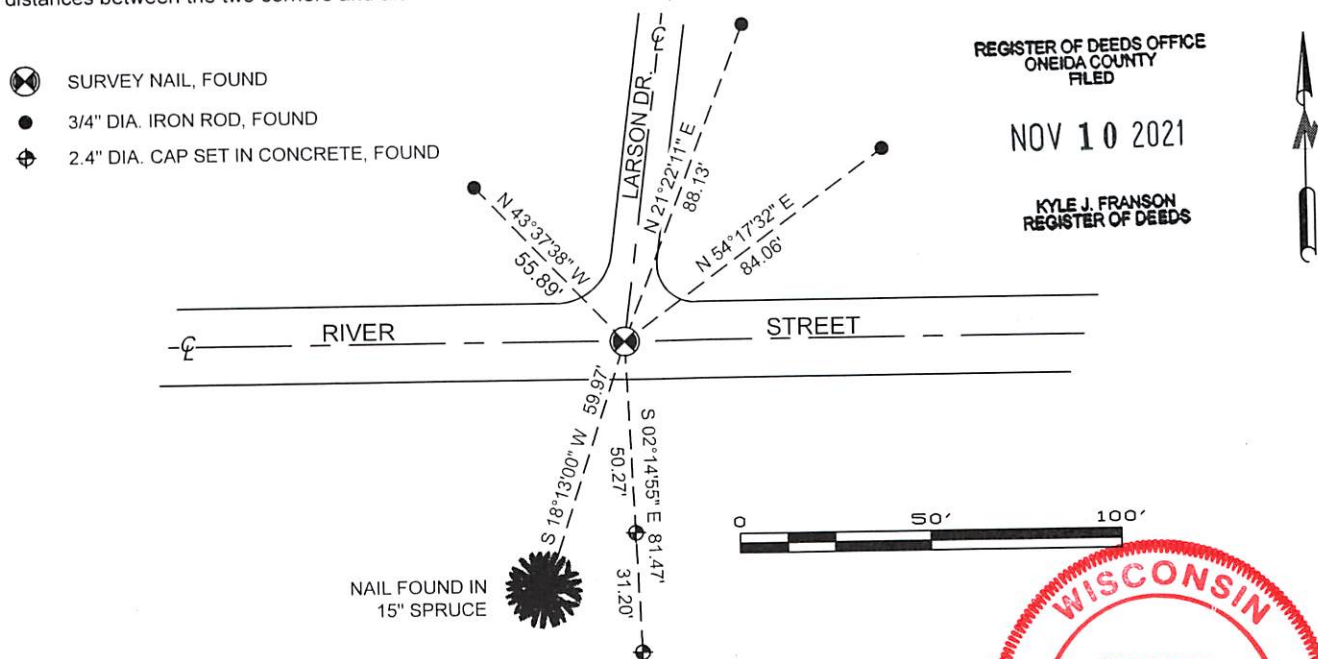
AUGUST 8, 2006 - SURVEYOR 2754 - JONATHON W. DULIN SET A BERNTSEN SURVEY SPIKE AT THE LOCATION PREVIOUSLY MENTIONED. SEE U.S.P.L.S. MONUMENT RECORD A-23 DATED OCTOBER 22, 2007.

NOVEMBER 7, 2017 - SURVEYOR 1234 - JAMES D. REIN DID NOT FIND THE CORNER MONUMENT AND REESTABLISHED ITS POSITION WITH A SURVEY NAIL USING EXISTING WITNESSES. SEE U.S.P.L.S. MONUMENT RECORD Z-23 DATED DECEMBER 12, 2017.

MAY 5, 2021 - I FOUND AND ACCEPTED A SURVEY NAIL IN THE CENTERLINE OF RIVER STREET AS WELL AS WITNESSES, SHOWN BELOW. NO NEW WITNESSES WERE ESTABLISHED.

The coordinate value shown has been verified by at least one of the following methods: 1) comparison to a previously GPS determined published value, 2) the value is the average of two or more GPS observations at a markedly different time; 3) one or more distances were measured back to the GPS observed corner from temporary GPS observed offset locations.

(c)(d)(e) Plan view of corner with ties to at least 4 witness monuments. If in disagreement with previously established corner, show the distances between the two corners and also indicate the ties to the disputed.



REGISTER OF DEEDS OFFICE
 ONEIDA COUNTY
 FILED

NOV 10 2021

KYLE J. FRANSON
 REGISTER OF DEEDS



(i) I, Jeffrey L. DeMuth, Professional Land Surveyor No. S-2656, hereby certify that the corner location on this record was determined by me or under my direction and control and that this U.S. Public Land Survey Monument Record is correct and complete to the best of my knowledge, and belief

[Handwritten Signature]
 SIGNATURE

AUGUST 5, 2021
 DATE

Z-23
 43708360020