

CERTIFIED LAND CORNER RESTORATION

Index No. N-6

History of original corner establishment: Corner established by Ripco Survey Crew, Drivas Surveyor, in 1962. Set 1" iron pipe with aluminum cap. Marked NBTs - Oak 3" N 20" 31 lks and Maple 4" S 52° W 45 lks.

State of Wisconsin

County of Oneida } ss.

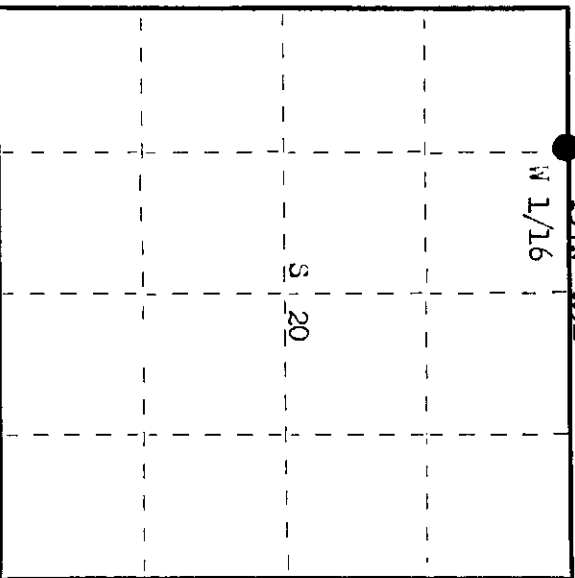
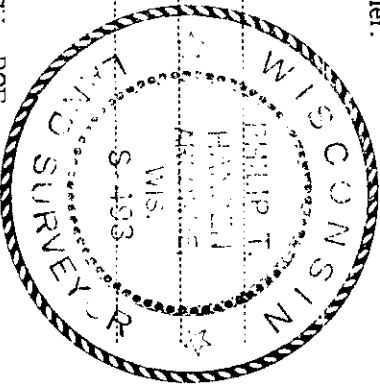
I, Phillip T. Hansen, do hereby certify that on the 22nd day of April, 1976, I found evidence of the 1/16 corner of section 17 & 20 Township 37, North, Range 9, East, Fourth Principal Meridian, as described hereon; and that from this evidence I established a new monument and accessories as described hereon to perpetuate the original location of this corner.

Resident witnesses:

Glen Barker

Jim Clarlin

Herb Wagoner



○ = Corner monument restored.

Description of corner evidence found: recovered 1" iron pipe w/aluminum cap stamped, recovered NBT - Red Oak 8" (9") N 20° W 31 lks, scribing grown over. W 1/16  
S17  
Maple 4" (5") S 52° W (S 62° W) 45 lks, scribing grown over. S20  
Ripco  
Pipe was loose in ground.

Description of monument and accessories I established to perpetuate the original location of this corner. extracted pipe from ground, found no cross bar on base. Installed crossbar and replaced monument. projects 18" above ground.

NBT - Maple 6" S 35° W 66.4 lks, scribed 1/16 BT.

Monument and BTs painted blue.

Dated at Rhineland, Wis., this 13th day of July, 1976

Signature Phillip T. Hansen Title Registered Land Surveyor Registration No. S-498  
 (County Surveyor, Registered Land Surveyor, or other duly authorized official)

Office of Register of Deeds, County of Oneida, I hereby certify that the within instrument was filed in this office for record on the 23rd day of July, 1976 at 1:00 o'clock P. M.

Doree Berge Kuehn  
 (Register of Deeds)

By \_\_\_\_\_ Deputy

3709170030