

CERTIFIED LAND CORNER RESTORATION

Index No. **Q-5**

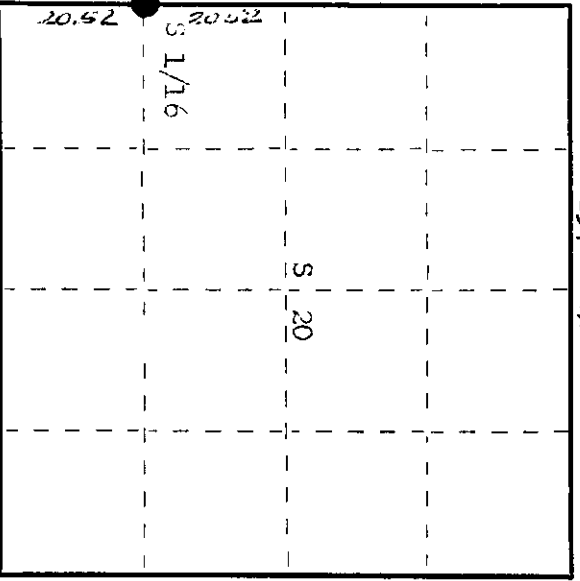
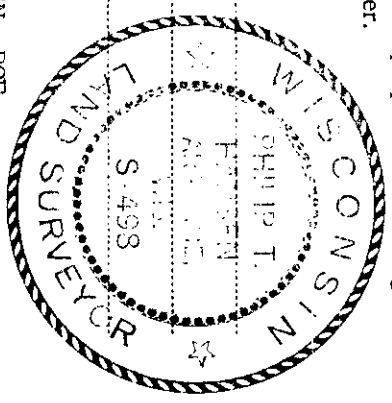
State of Wisconsin }
County of Oneida } ss.

I, Phillip T. Hanser, do hereby certify that on the 15th day of April, 1976, I found evidence of the 1/16 corner of Section 19 and 20 Township 27 North, Range 2 East, Fourth Principal Meridian,

I established a new monument and accessories as described hereon to perpetuate the original location of this corner.

Resident witnesses:

Glen Barker
Jim Hoffman
Herb Swenor



○ = Corner monument restored.

History of original corner establishment: Corner established by St. Denis Surveyors, Goddard and Drivins in 1861. From established a 1/4 corner between Sec. 19 and 20, ran a random line South 161° W.C. 41.04, ending to close out 1.21 acres west of Section corner. Set 1/16 corner at 20.52 distance 60.5 lks east. Marked with - Red Pine 14" x 56 lks. Maple 6" x 590 = 41, lks.

Description of corner evidence found:

Recovered 1" iron pipe with aluminum cap, stamped. Also a 5" oak post, scribed 1/16 20, 19, beside iron pipe. Recovered iron - Machine 14" x 50 lks, scribed 1/16 of Maple 5" (3") x 590 = 41.27 lks, scribing over.

Description of monument and accessories I established to perpetuate the original location of this corner.

as the iron pipe was in excellent condition, it was left in place. removed wood post from beside iron pipe. added stamping to cap. Painted iron pipe and H.T.s blue.

1/16
19/20
27N R27E
Hanser

Dated at Oneida, Wis., this 29th day of June, 1976.

Signature: *Phillip T. Hanser* Title: Registered Land Surveyor Registration No. S-498
County Surveyor, Registered Land Surveyor, or other duly authorized official

Office of Register of Deeds, County of Oneida. I hereby certify that the within instrument was filed in this office for record on the 23rd day of July, 1976 at 1:00 o'clock P.M.

Dorice Verage Kuehn
(Register of Deeds)

By: _____ Deputy

3709191000