

CERTIFIED LAND CORNER RESTORATION

Index No. 0-17

State of Wisconsin }
County of Oneida } ss.

I Phillip T. Hansen, do hereby certify that on the 22nd day of February, 1977, I found evidence of the N 1/16 corner of Section 22 - 23 Township 9 East, North, Range 37, Fourth Principal Meridian,

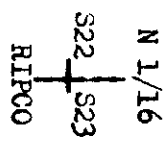
as described hereon; and that from this evidence I established a new monument and accessories as described hereon to perpetuate the original location of this corner.

Resident witnesses:
Jim Claflin
Herb Wagoner

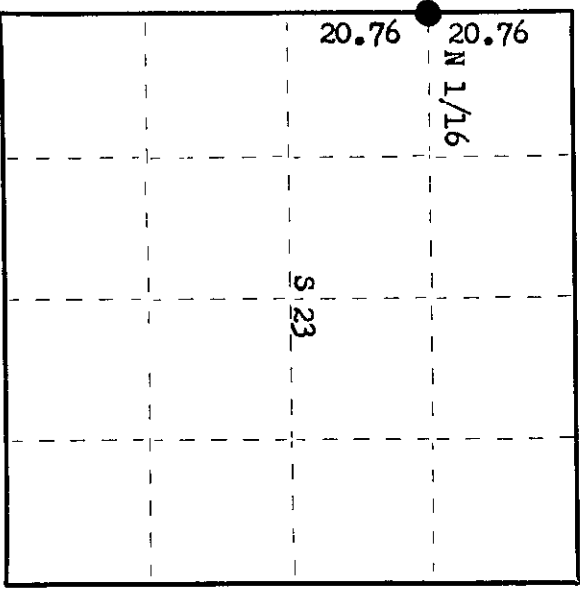
History of original corner establishment:
Corner established by N. Loftus, Ripco Surveyor, in 1955.
Ran a random line S 30° E from recovered Section Corner 14, 15, 22, 23 41.52 chins to close out 6 links east of recovered W 1/4 Corner. Set N 1/16 Corner at 20.76 chains intermediate.

Description of corner evidence found:

Recovered 1" iron pipe with 2" square brass cap, stamped:
Monument recovered in good condition.
Recovered OBTS - Black Spruce 7" N45°W 22.7 links, scribing not legible.
Black Spruce 14" S73°E 69.0 links, scribing not legible.



Description of monument and accessories I established to perpetuate the original location of this corner.
As monument was recovered in good condition, it was left in place.
Added stamping T37N R9E to stamping on brass cap.
Monument projects 22" above ground.



○ = Corner monument restored.

Dated at Rhinelander, Wis., this 29th day of March, 1977.

Signature: Phillip T. Hansen, Title: Registered Land Surveyor, Registration No. S-498
(County Surveyor, Registered Land Surveyor, or other duly authorized official)

Office of Registrar of Deeds, County of Oneida, I hereby certify that the within instrument was filed in this office for record on the 5th day of May, 1977, at 2:00 o'clock P.M.

Signature: Doris Verge Kuehn, (Register of Deeds)

By: Deputy

370922 3000