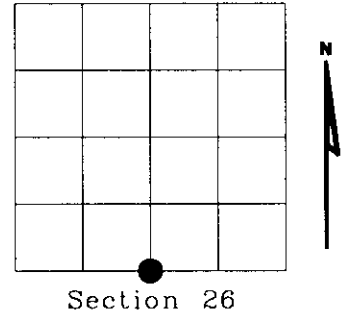


U.S. PUBLIC LAND SURVEY MONUMENT RECORD

NOTE: This form is intended and designed to fulfill all requirements of Wisconsin Administrative Code, Chapter A-E 708 U.S. Public Land Survey Monument Record (3)(a)(b)(c)(d)(e)(f)(g)(h)(i). An additional sheet may be added if necessary to conform with said requirements

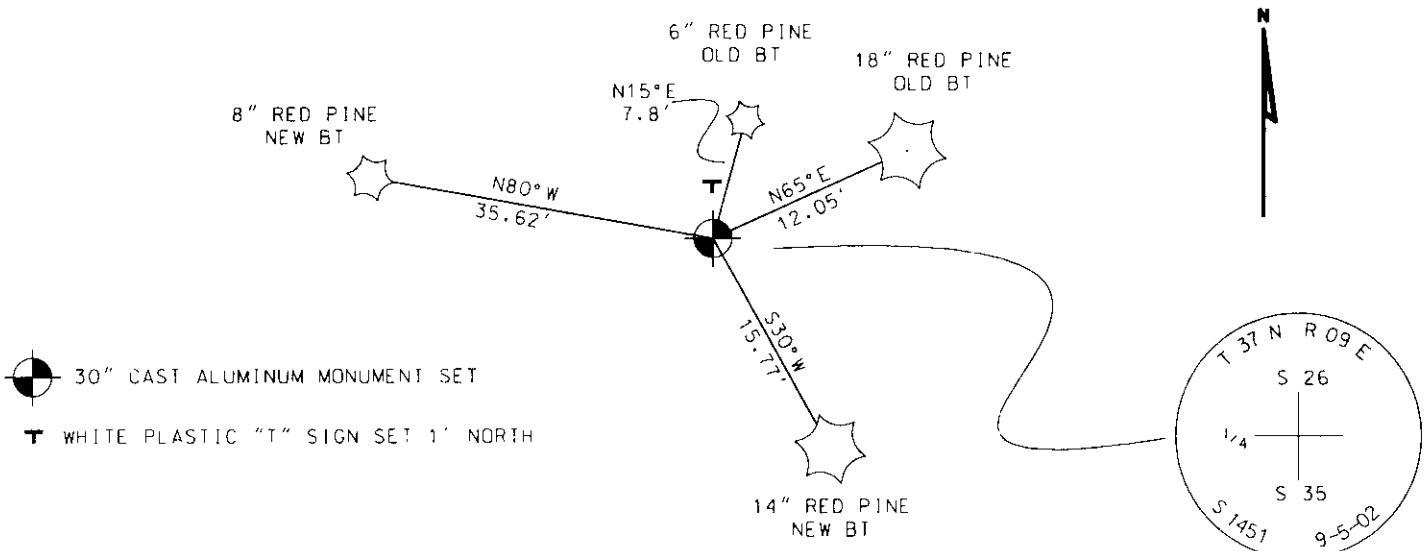
(a) Corner location: Township 37 North
 Range 09 East
 Town of PINE LAKE
 ONEIDA County, Wisconsin



(b)(f)(g)(h) Description of monument found at this corner and if it was accepted, state all evidence (material, testimonial, occupational, plats, records, other monuments) used as a basis for accepting. If not accepted or if nothing was found, state evidence used as basis for establishing location. If reestablished through lost corner proportionate methods, indicate all monuments, distances and directions used to establish. Indicate type of monument found or set and sign post.

- 1863 - William E. Daugherty set a wood post as original corner and marked OBts.
 OBT: Birch S17°E 12 Lks.
- 1903 - D.H. Vaughn found original 1/4 post, birch down but marks are plain. Set new post.
 BTs: 12" W. Pine N42°E 52.5 Lks.
 12" W. Pine S10°E 55 Lks.
- 1965 - Bill Egtvedt & Bill Suth's field notes show iron pipe or brass cap.
- 2002 - I found 2" dia. iron pipe. Replaced 2" dia. iron pipe with Oneida county 2" dia. aluminum pipe 30" long with a 3" dia. aluminum tablet stamped as shown below.
 BTs found: 6" R. Pine N15°E 7.8' (others)
 18" R. Pine N65°E 12.05' (others)

(c)(d)(e) Plan view of corner with ties to at least 4 witness monuments. If in disagreement with previously established corner, show the distances between the two corners and also indicate the ties to the disputed corner.



(i) I, Eugene C. Uttech, Registered Land Surveyor *S-1451, hereby certify that the corner location on this record was determined by me or under my direction and control and that this U.S. Public Land Survey Monument Record is correct and complete to the best of my knowledge and belief.

Eugene C. Uttech
 Signature
 11-06-02
 Date



Index No. V 19

3109260020