

CERTIFIED LAND CORNER RESTORATION

Index No. **2-7**

State of Wisconsin

County of ONEIDA } ss.

William Immich

do hereby certify that on the 26 day

of September 1980, I found

evidence of the South One Quarter

corner of Section 32

of Township 37

North, Range

9 East, Fourth Principal Meridian,

as described hereon; and that from this evidence I established a new monument and accessories as described hereon to perpetuate the original location of this corner.

Resident witnesses.

Mark Handwerker

Michael R. Remington

History of original corner establishment:

- 1859, Hiram C. Fellows: West Between Sec. 5 & 32 Var. 70° 35' E, 40.00 chains
- set 1/4 post B.T.s W Pine 12" N43°W 14 lks., W Pine 12" S39°E 11 lks.
- June 15, 1904, D. H. Vaughan found one original bearing tree
- August 31, 1949, Kieth Hall found iron pipe below surface of road
- B.T.s; Tamarrack 12" N57°E 42.6 ft., Jack Pine 10" S43°W 79.2 ft.
- April 20, 1950, F.R. Wincentsen found iron pipe and bearing trees in place
- August 28, 1967, State Highway Commission R/R spike
- July 12, 1971, Edward McNowm found iron pipe

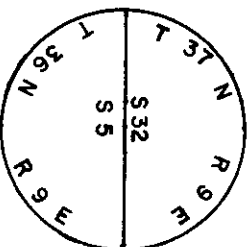
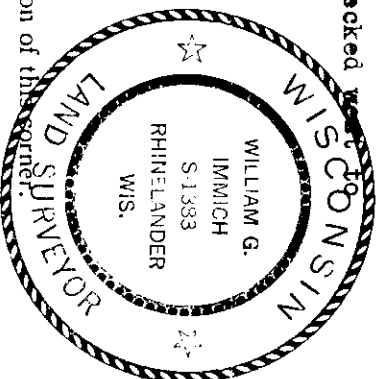
Description of corner evidence found:

reset corner from information on McNowms map of survey, 1971; checked SW corner of Sec. 32 to confirm corner

Description of monument and accessories I established to perpetuate the original location of this corner. Set Capped aluminum Oneida County Monument stamped as follows:

Witnesses:

- Top nut of hydrant S28°W 60.79 ft.
- power pole # 57EE63 P.K. nail in side N44°W 35.09 ft.
- southwest corner of catch basin N73°E 54.65 ft.
- center of sanitary sewer cover South 1.78 ft.
- northwest corner of apartment building S26°E 105.34 ft.



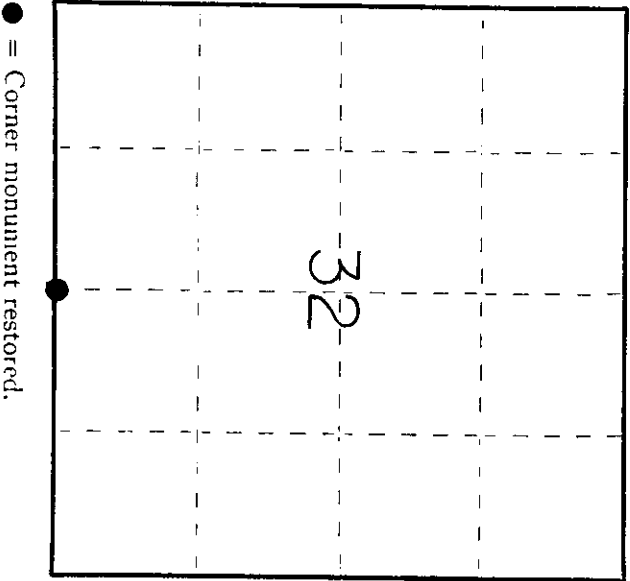
Dated at Rhineland, Wis., this 4th day of November, 1980

Signature *William Immich* Title Registered Land Surveyor Registration No. S-1383
(County Surveyor, Registered Land Surveyor, or other duly authorized official)

Office of Register of Deeds, County of Oneida
Instrument was filed in this office for record on the 11 day of June, 1980
at 4:00 o'clock P.M.

Barbara Vogel
(Register of Deeds)

By *Edward A. Bitts* Deputy



● = Corner monument restored.

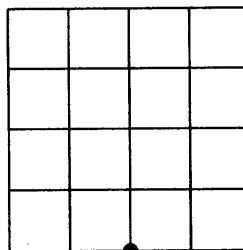
3709320020

U.S. PUBLIC LAND SURVEY MONUMENT RECORD

Note: This form is intended and designed to fulfill all requirements of the Wisconsin Administrative Code, Chapter A-E 7.08 U.S. Public Land Monument Record (3)(a)(b)(c)(d)(e)(f)(g)(h)(i). An additional sheet may be added if necessary to conform with said requirements.

(a) CORNER LOCATION: Oneida County Corner I.D. No.:

South 1/4 Corner, Sec. 32 3709320020
Township 37 North
Range 9 East
City of Rhinelanders
County of Oneida



SECTION 32

(f)(g)(h) DESCRIPTION OF MONUMENT FOUND AT THIS CORNER AND IF IT WAS ACCEPTED, STATE ALL EVIDENCE (MATERIAL, TESTIMONIAL, OCCUPATIONS, PLATS, RECORDS, OTHER MONUMENTS) USED AS A BASIS FOR ESTABLISHING LOCATION. IF NOT ACCEPTED OF IF NOTHING WAS FOUND, STATE EVIDENCE USED AS BASIS FOR ESTABLISHING LOCATION. IF REESTABLISHED THROUGH LOST CORNER PROPORTIONATE METHODS, INDICATE ALL MONUMENTS, DISTANCES AND DIRECTIONS USED TO ESTABLISH. INDICATE TYPE OF MONUMENT AND SIGN POST FOUND OR SET.

1859 - Hiram C. Fellows: West between Sec. 5 and 32, Var. 7°35' E, 40.00 chains set 1/4 post from which the following ties bear: 12" white pine, S42°W, 14 lks, 12" white pine, N39°E, 11 lks, 10" spruce, S72°E, 20 lks, 10" birch, S50°W, 10 lks

June 15, 1904 - D.H. Vaughn, found one original BT

August 31, 1949 - Keith Hall found iron pipe below surface of road. BT's: 12" tamarack, N57°E, 42.6', 10" jack pine S45°W, 79.2'

April 20, 1950 - F.R. Wincensten found iron pipe and bearing trees in place

August 28, 1967 - State Highway Commission R/R spike

July 12, 1971 - Edward McKnown found iron pipe

June 11, 1986 - William Immich resets capped aluminum Oneida County Monument and makes new ties. See Certified Land Corner Restoration form

The above information is from monument record by William G. Immich S-1383

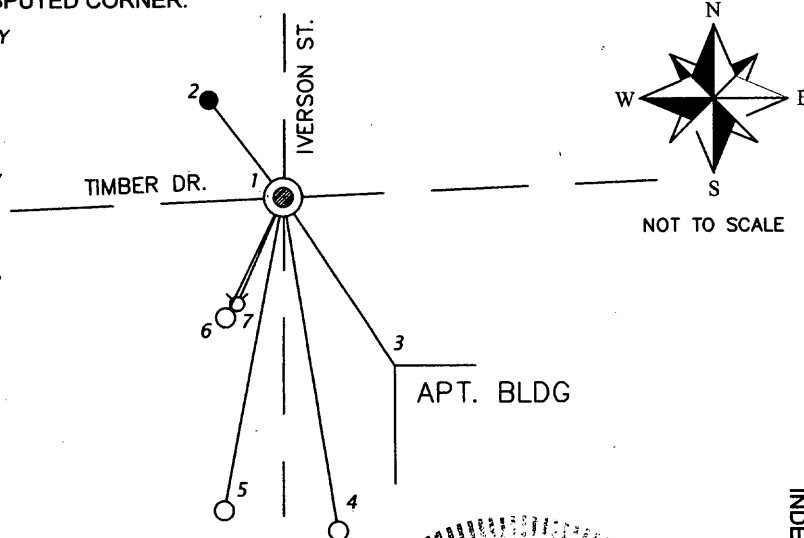
December 3, 2010 - Anthony R. Jones, Registered Land Surveyor No. S-2508 finds spike at location.

November 4, 2011 - Anthony R. Jones, Registered Land Surveyor No. S-2508 sets new ties as shown below. Catch basin and power pole shown on Immich monument record have since been replaced. Nail accepted as corner location.

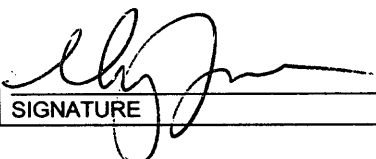
(c)(d)(e) PLAN VIEW OF CORNER WITH TIES TO AT LEAST 4 WITNESS MONUMENTS. IF IN DISAGREEMENT WITH PREVIOUSLY ESTABLISHED CORNER, SHOW THE DISTANCE BETWEEN THE TWO CORNERS AND ALSO INDICATE THE TIES TO THE DISPUTED CORNER.

BEARINGS BASED ON ONEIDA COUNTY
ACCEPTED GPS DATA

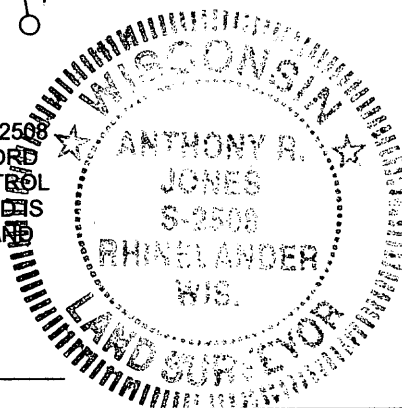
- 1: FOUND NAIL IN BLACKTOP AT INTERSECTION OF TIMBER DRIVE AND IVERSON STREET
- 2: SET 3/4" BY 18" IRON ROD W/ PLASTIC POST
N 37°21'14" W, 63.60'
- 3: NW BUILDING CORNER
S 33°22'24" E, 105.11' (S26°E, 105.34')
- 4: FOUND 1 5/8" IRON ROD
S 09°04'21" E, 176.02'
- 5: FOUND 1 1/4" IRON PIPE
S 10°56'54" W, 165.92'
- 6: FOUND 1 1/4" IRON PIPE
S 25°46'00" W, 69.78'
- 7: FOUND TOP NUT OF FIRE HYD.
S 23°29'05" W, 60.71'
(S 28° W, 60.79')



(i) I, ANTHONY R. JONES, REGISTERED LAND SURVEYOR NO. S-2508 HEREBY CERTIFY THAT THE CORNER LOCATION ON THIS RECORD WAS DETERMINED BY ME OR UNDER MY DIRECTION AND CONTROL AND THAT THIS U.S. PUBLIC LAND SURVEY MONUMENT RECORD IS CORRECT AND COMPLETE TO THE BEST OF MY KNOWLEDGE AND BELIEF.


SIGNATURE

11/4/11
DATE



INDEX NO. 27

3709320020