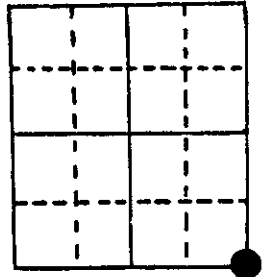
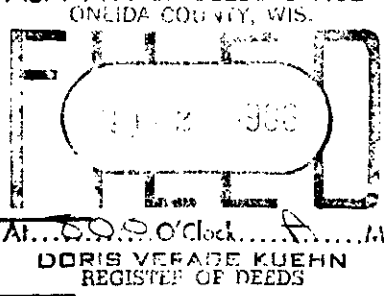


# U.S. PUBLIC LAND SURVEY MONUMENT RECORD

Note: This form is intended and designed to fulfill all requirements of Wisconsin Administrative Code, Chapter A-E 5.02, U.S. Public Land Survey Monument Record (3) (a) (b) (c) (d) (e) (f) (g) (h). An additional sheet may be added if necessary to conform with said requirements.

(a) Corner location: Township 37 North  
 Range 9 East West  
 Town/City/Village Pine Lake  
 County Oneida

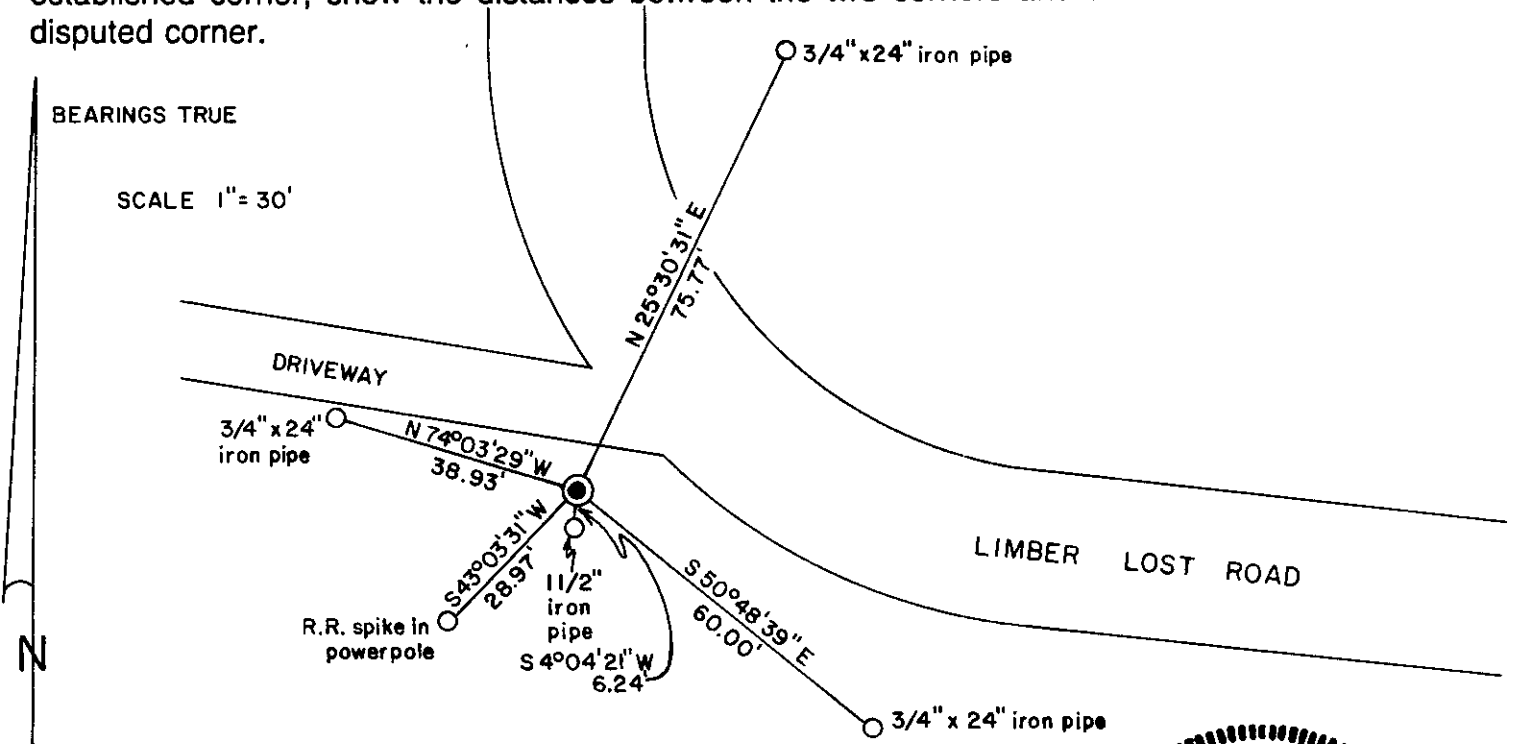


Section 36

(b) (f) (g) (h) Description of monument found at this corner and if it was accepted, state all evidence (material, testimonial, occupational, plats, records, other monuments) used as a basis for accepting. If not accepted or if nothing was found, state evidence used as basis for establishing location. If reestablished through lost corner proportionate methods, indicate all monuments, distances and directions used to establish.

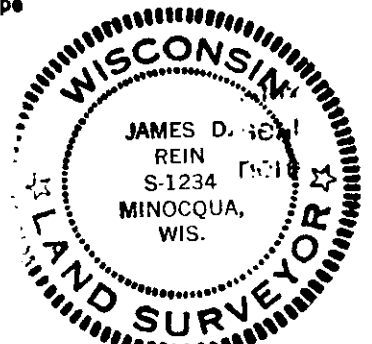
- July, 1859 - H. C. Fellows, Deputy Surveyor - Established corner to Townships 36 and 37 North Ranges 9 and 10 East. B.T.'s: W. Pine 10", N18°W, 5 links - W. Pine 9", S17°E, 8 links - W. Pine 7" N80°E, 6 links - birch 10", S25°W, 12 links.
- June 26, 1903 - D. H. Vaughan - Found 4 original B.T.'s and set a post.
- July, 1974 - John H. Fisher, Northwoods Surveyors - Identifies corner as 1 1/2" dia. iron pipe. B.T.'s: 10" N. Pine, S38°E, 67.1 feet and a railroad spike in a powerpole S44°W, 28.0 feet.
- July 2, 1975 - Jerome Kraemer and James Rein, Wilderness Surveying - tied to corner, 1 1/2" iron pipe.
- August 14, 1986 - James D. Rein, Wilderness Surveying, Inc. - re-tied to corner and found brass capped (unstamped) 2" iron pipe in close agreement with old tie. Found 1 1/2" dia. iron pipe S4°-04'-21"W, 6.24 feet and R.R. Spike in power pole S43°-03'-31"W, 28.97 feet. Set 3 3/4" x 24" iron pipes for reference monuments: N74°-03'-29"W, 38.93 feet - N25°-30'-31"E, 75.77 feet - S50°-48'-39"E, 60.00 feet.

(c) (d) (e) Plan view of corner with ties to at least 4 witness monuments. If in disagreement with previously established corner, show the distances between the two corners and also indicate the ties to the disputed corner.



(i) I, James D. Rein, Registered Land Surveyor No. S-1234  
 (type or print name) certify that the corner location on this record was determined by me or under my direction and control and that this U.S. Public Land Survey Monument Record is correct and complete to the best of my knowledge and belief.

James D. Rein August 14, 1986  
 Signature Date



Index No. Z-25

3709360000