

U.S. PUBLIC LAND SURVEY MONUMENT RECORD

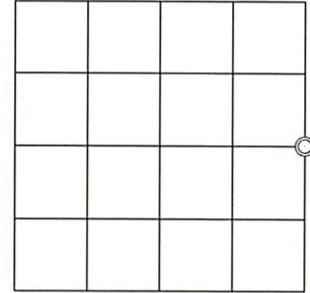
Oneida County
Land Information Office
Filed
1/23/2024

Note: This form is intended and designed to fulfill all requirements of the Wisconsin Administrative Code, Chapter A-E 7.08 U.S. Public Land Monument Record (3)(a)(b)(c)(d)(e)(f)(g)(h)(i). An additional sheet may be added if necessary to conform with said requirements.

(a) CORNER LOCATION: WISCRS - Oneida County
 East quarter corner of Section 2 North: 195,084.06 USft
 Township 37 North East: 318,852.05 USft
 Range 10 East Datum: NAD 83(2011) ep. 2010.00
 Town of Stella GNSS Method: RTN - Direct
 County of Oneida GNSS Control: WISCRS VRS

(RECORDING AREA)

SECTION 2



(b) HISTORY OF ORIGINAL CORNER ESTABLISHMENT

Original Surveyor: William E. Daugherty, Deputy Surveyor
 Date of Survey: Commenced August 21, 1863
 Completed August 27, 1863
 Original B.T.'S Birch ? N89°E, 23 lks.
 Aspen 12" S48°W, 39 lks.

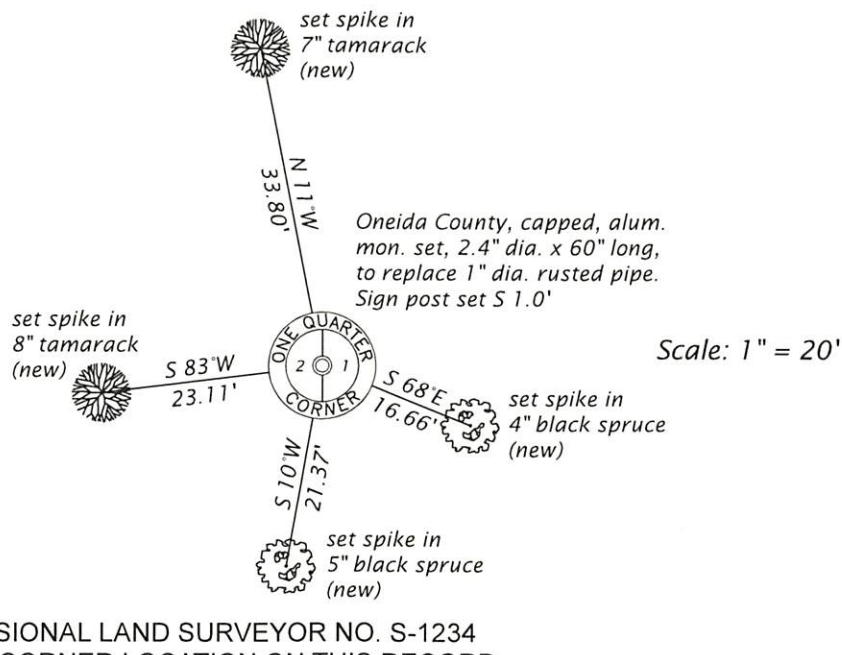
(f)(g)(h) DESCRIPTION OF MONUMENT FOUND AT THIS CORNER AND IF IT WAS ACCEPTED, STATE ALL EVIDENCE (MATERIAL, TESTIMONIAL, OCCUPATIONAL, PLATS, RECORD, OTHER MONUMENTS) USED AS A BASIS FOR ESTABLISHING LOCATION. IF NOT ACCEPTED OR IF NOTHING WAS FOUND, STATE EVIDENCE USED AS BASIS FOR ESTABLISHING LOCATION. IF REESTABLISHED THROUGH LOST CORNER PROPORTIONATE METHODS, INDICATE ALL MONUMENTS, DISTANCES AND DIRECTIONS USED TO ESTABLISH. INDICATE TYPE OF MONUMENT AND SIGN POST FOUND OR SET.

December 13 -16, 1909 - D.H. Vaughan, Oneida County Surveyor, Old Field Book 6, pages 116 and 117, and Dorr-Vaughan Book, page 322. Went to the NW Corner of Section 1 and ran South Var. 3.45 E. 39.73 chains (2622.18') fell 21 links W. of ¼ P. ok record.

November 16, 2023 - James D. Rein, PLS No. 1234, we found the top 20" of a 1" diameter iron pipe in bog. The bottom of pipe rusted away. The recovered iron pipe position is harmonious with Vaughans record measurement north 2622.18' (ours 2619.30') to the section corner and east 2712.6' (ours calc. 2712.63' using Map B8358, to the center quarter corner. We replaced iron the pipe with a 2.4" dia. x 60" long, capped stamped aluminum monument and placed a white sign post 1.0 feet south of the corner. New corner reference ties are shown in the plan view.

The coordinate value shown has been verified by the average of two or more GPS observations at a markedly different time satisfying the accuracy requirements defined and qualified in the 2022 Oneida County Fee Schedule for USPLS Corners.

(c)(d)(e) PLAN VIEW OF CORNER WITH TIES TO AT LEAST 4 WITNESS MONUMENTS. IF IN DISAGREEMENT WITH PREVIOUSLY ESTABLISHED CORNER, SHOW THE DISTANCE BETWEEN THE TWO CORNERS AND ALSO INDICATE THE TIES TO THE DISPUTED CORNER.



See reverse side for photos

(i) I, JAMES D. REIN, PROFESSIONAL LAND SURVEYOR NO. S-1234 HEREBY CERTIFY THAT THE CORNER LOCATION ON THIS RECORD WAS DETERMINED BY ME OR UNDER MY DIRECTION AND CONTROL AND THAT THIS U.S. PUBLIC LAND SURVEY MONUMENT RECORD IS CORRECT AND COMPLETE TO THE BEST OF MY KNOWLEDGE AND BELIEF.



James D. Rein 12-27-23
 SIGNATURE DATE

INDEX NO. C - 21
 3710022000

REVERSE SIDE

U.S. PUBLIC LAND SURVEY MONUMENT RECORD

Note: This form is intended and designed to fulfill all requirements of the Wisconsin Administrative Code, Chapter A-E 7.08 U.S. Public Land Monument Record (3)(a)(b)(c)(d)(e)(f)(g)(h)(i). An additional sheet may be added if necessary to conform with said requirements.

Photo of Monument

