

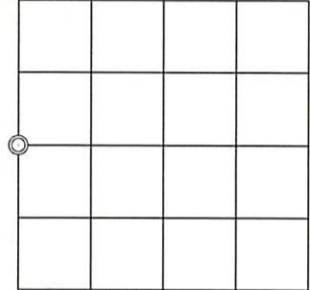
U.S. PUBLIC LAND SURVEY MONUMENT RECORD

Note: This form is intended and designed to fulfill all requirements of the Wisconsin Administrative Code, Chapter A-E 7.08 U.S. Public Land Monument Record (3)(a)(b)(c)(d)(e)(f)(g)(h)(i). An additional sheet may be added if necessary to conform with said requirements.

(a) CORNER LOCATION: WISCRS - Oneida County
West quarter corner of Section 2 N: 195,415.23 USft
Township 37 North E: 313,625.64 USft
Range 10 East Datum: NAD 83(2011) ep. 2010.00
Town of Stella GNSS Method: RTN - Direct
County of Oneida GNSS Control: WISCORS VRS

(RECORDING AREA)

SECTION 2



(b) HISTORY OF ORIGINAL CORNER ESTABLISHMENT

Original Surveyor: William E. Daugherty, Deputy Surveyor
Date of Survey: Commenced August 21st, 1863
Completed August 27th, 1863
Original B.T.'S: Tamarac 10" S52°E, 3 links
Tamarac 10" N83°W, 11 links

(f)(g)(h) DESCRIPTION OF MONUMENT FOUND AT THIS CORNER AND IF IT WAS ACCEPTED, STATE ALL EVIDENCE (MATERIAL, TESTIMONIAL, OCCUPATIONAL, PLATS, RECORD, OTHER MONUMENTS) USED AS A BASIS FOR ESTABLISHING LOCATION. IF NOT ACCEPTED OR IF NOTHING WAS FOUND, STATE EVIDENCE USED AS BASIS FOR ESTABLISHING LOCATION. IF REESTABLISHED THROUGH LOST CORNER PROPORTIONATE METHODS, INDICATE ALL MONUMENTS, DISTANCES AND DIRECTIONS USED TO ESTABLISH. INDICATE TYPE OF MONUMENT AND SIGN POST FOUND OR SET.

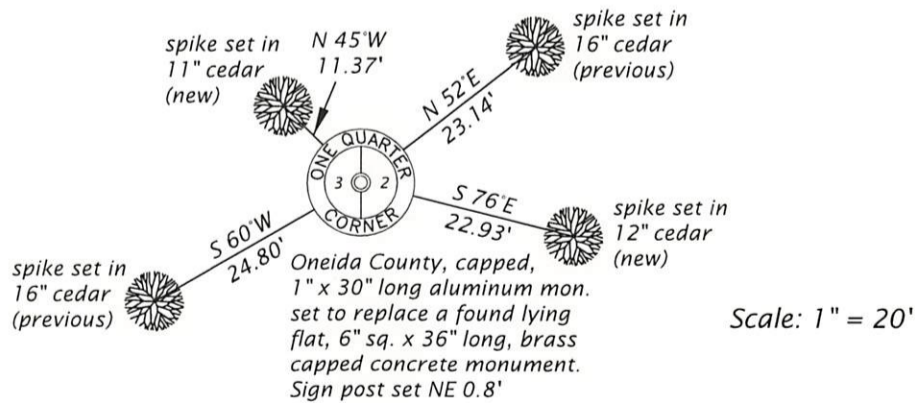
October 16, 1915 - D. H. Vaughan, County Surveyor, Old Field Bk. 8, pages 25 and 26 and Dorr-Vaughan Book, page 322 found ¼ post 9.08 ch. East of random, both bearings are down, marks are plain. Set new post and made new bearings; Cedar 7" N63°E, 28 ½ links (18.81 feet); Cedar 8" S63°W, 36 links (23.76 feet).

1933 - H. C. Hall, County Surveyor, Book 1, pages 299 and 302 describes placing reinforced concrete monuments 6" x 6" x 36" with a stamped 3 ½" dia. brass cap at "original government corners" as part of an appropriation program. There is what appears to be a later notation in this book "No Concrete Post".

November 15, 2023 - James D. Rein, PLS No. 1234, we recovered lying flat, a 6" square, 36" long concrete monument with an Oneida County brass tablet marked "ORIG 1/4S COR, S2 S3, T37N R10E, HALL 1933". The corner is located in a bog, over hardpan area, the monument apparently forced up by years of frost action. We set a 1" x 30" long, capped stamped aluminum monument at the concrete monument base. The corner is referenced by at least one of Vaughans cedar bearing trees as shown in the plan that is harmonious with Vaughans survey. I do not accept an iron pipe set by single proportion measurement, as shown on that map filed in the Oneida County Surveyors Office, as B152, which bears S 74°16'45"W, 334.46 feet from the recovered corner. See plan for reference ties.

The coordinate value shown has been verified by the average of two or more GPS observations at a markedly different time satisfying the accuracy requirements defined and qualified in the 2022 Oneida County Fee Schedule for USPLS Corners.

(c)(d)(e) PLAN VIEW OF CORNER WITH TIES TO AT LEAST 4 WITNESS MONUMENTS. IF IN DISAGREEMENT WITH PREVIOUSLY ESTABLISHED CORNER, SHOW THE DISTANCE BETWEEN THE TWO CORNERS AND ALSO INDICATE THE TIES TO THE DISPUTED CORNER.



See reverse side for photos

(i) I, JAMES D. REIN, PROFESSIONAL LAND SURVEYOR NO. S-1234 HEREBY CERTIFY THAT THE CORNER LOCATION ON THIS RECORD WAS DETERMINED BY ME OR UNDER MY DIRECTION AND CONTROL AND THAT THIS U.S. PUBLIC LAND SURVEY MONUMENT RECORD IS CORRECT AND COMPLETE TO THE BEST OF MY KNOWLEDGE AND BELIEF.



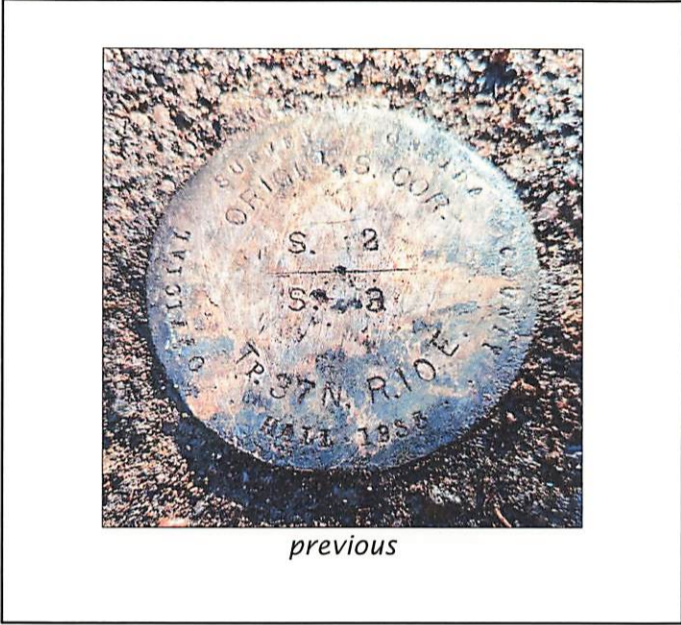
James D. Rein
SIGNATURE
12-27-23
DATE

REVERSE SIDE

U.S. PUBLIC LAND SURVEY MONUMENT RECORD

Note: This form is intended and designed to fulfill all requirements of the Wisconsin Administrative Code, Chapter A-E 7.08 U.S. Public Land Monument Record (3)(a)(b)(c)(d)(e)(f)(g)(h)(i). An additional sheet may be added if necessary to conform with said requirements.

Photo of Monuments



previous



new

Photo of Site

