

CERTIFIED LAND CORNER RESTORATION

Index No. F-5

State of Wisconsin }  
 County of Oneida } ss.

I, Phillip T. Hansen, do hereby certify that on the 12th day of May, 1980, I found evidence of the N. 1/16 corner of Sections 7 and 8

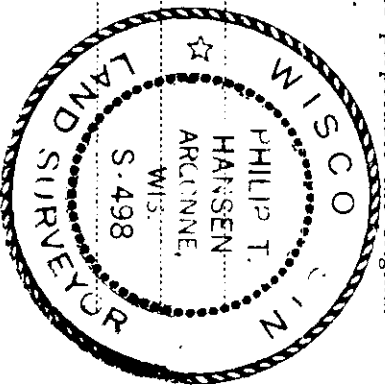
Township 37, North, Range 10 East, Fourth Principal Meridian,

as described hereon; and that from this evidence I established a new monument and accessories as described hereon to perpetuate the original location of this corner.

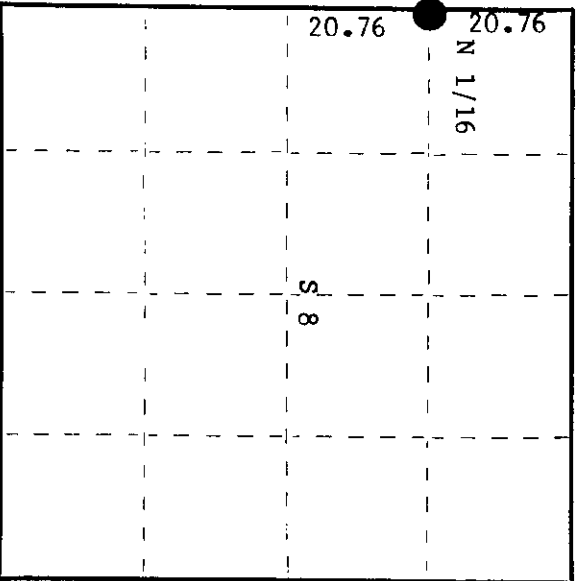
Resident witnesses:

Jim Clafin

Herb Wagoner



T37N R10E



○ = Corner monument restored.

History of original corner establishment:

Corner established by N. Loftus, Ripco surveyor, in 1954. Ran north from 1/4 between sections 7 and 8, bearing N 1° 30' E, 41.47 chains to close out on section corner 2.09 chains east, corrected distance 41.52 chains. Set N 1/16 at 20.76 chains and 1.045 chains west. No record of accessories established.

Description of corner evidence found:

Recovered Ripco's 3/4" iron pipe with 2" square brass cap in good condition, but not firmly set in ground. No evidence or record of any BT's established.

Description of monument and accessories I established to perpetuate the original location of this corner.

Reset monument in same location, deeper in ground. Monument now projects 18". Cap stamped: Marked NBT's - Maple 7" N76°W 44.0 links Maple 5" N16°W 33.1 links both scribed 1/16 BT.

N 1/16  
 S7 + S8  
 RIPCO

Dated at Rhineland, Wis., this 10th day of July, 1980

Signature: Phillip T. Hansen Title: Registered Land Surveyor Registration No. S-498  
 County Surveyor, Registered Land Surveyor, or other duly authorized official

Office of Register of Deeds, County of Oneida, I hereby certify that the within instrument was filed in this office for record on the 21st day of July, 1980 at 3:35 o'clock P. M.

Terrie Verge Kuehn  
 (Register of Deeds)

By: \_\_\_\_\_ Deputy

3710073000