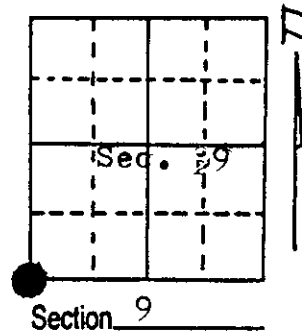


U.S. PUBLIC LAND SURVEY MONUMENT RECORD

Note: This form is intended and designed to fulfill all requirements of Wisconsin Administrative Code, Chapter A-E 5.02, U.S. Public Land Survey Monument Record (3) (a) (b) (c) (d) (e) (f) (g) (h) (i). An additional sheet may be added if necessary to conform with said requirements.

(a) Corner location: Township 37 North
 Range 10 East/West
 Town/City/Village Stella
 County Oneida

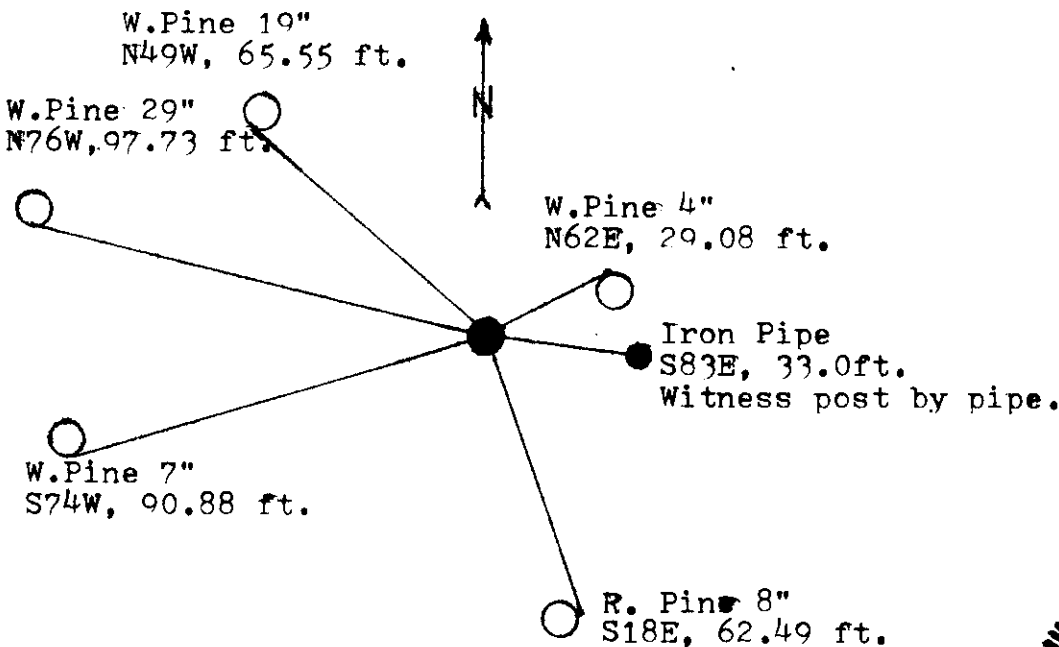


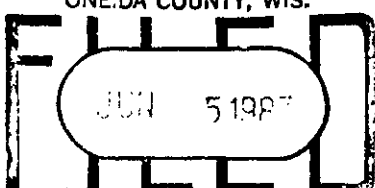
(b) (f) (g) (h) Description of monument found at this corner and if it was accepted, state all evidence (material, testimonial, occupational, plats, records, other monuments) used as a basis for accepting. If not accepted or if nothing was found, state evidence used as basis for establishing location. If reestablished through lost corner proportionate methods, indicate all monuments, distances and directions used to establish.

Surveyed in 1863 by William E. Daugherty. Set Post, Yellow pine 12", S74E, 66 Lks. Birch 10, N40W, 73 Lks.
 F.R. Wincentzen on March 3, 1953 found Iron pin and W.Pine 6", N51°30'W, 99lks. W.Pine 14", N80°30'W, 147.6 lks.
 Wincentzen ran North line of Section 16 and set the North Quarter corner by proportional and the sixteenth corners between Sec. 9 and 16

Survey For England by Immick in 1979.
 Set Railroad Spike for corner from W. pine bearing trees and set pipe along the south line of the SW 1/4 SW 1/4 of section 9. Set first pipe at S88°48'E, 33.0Ft.
 June 4, 1987 I found Railroad Spike in Road. W. Pine 29", N76W, 97.73 Ft. W.Pine 19", N49W, 65.55 Ft. Iron pipe S83E, 33.00 Ft.
 I replaced R.R. Spike with a 30" long Aluminum County Monument with cap set 3" below surface of road and buried the spike on the south side of monument. Cap is stamped to identify corner. Blazed and scribed 3 new bearing trees as shown on sketch below.

(c) (d) (e) Plan view of corner with ties to at least 4 witness monuments. If in disagreement with previously established corner, show the distances between the two corners and also indicate the ties to the disputed corner. 8 penny Galvanized nails in side of trees as shown



REGISTER OF DEEDS OFFICE
 ONEIDA COUNTY, WIS.

 At 8:00 O'Clock a M
 DORIS VERAGE KUEHN
 REGISTER OF DEEDS

WISCONSIN
 JEAN F. RESVICK
 LAND SURVEYOR
 WIS.

(i) I, Jean F. Resvick, RLS S-802
 (type or print name) certify that the corner location on this record was determined by me or under my direction and control and that this U.S. Public Land Survey Monument Record is correct and complete to the best of my knowledge and belief.

Jean F. Resvick Signature June 5, 1987 Date

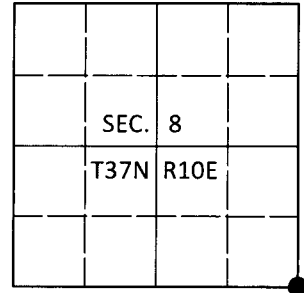
Index No. 37

U.S. PUBLIC LAND SURVEY MONUMENT RECORD

Note: This form is intended and designed to fulfill all requirements of Wisconsin Administrative Code, Chapter A-E 7.08 U.S. Public Land Survey Monument Record (3)(a-i).

(a) CORNER LOCATION
 Cor. of Secs. 8, 9, 16 & 17
 Township 37 North
 Range 10 East of the 4th P.M.
 Town of Stella
 County of Oneida

WISCRS - Oneida County
 N: 187,928.23 USft
 E: 302,252.74 USft
 Datum: NAD 83(2011)
 GNSS Method: RTN - Direct
 GNSS Control: WISCRS VRS



(b) HISTORY OF ORIGINAL CORNER ESTABLISHMENT

Original Surveyor:

Original Accessories:

Date of Survey Commenced:
 Completed:

See previous USPLS Monument Record

(b)(f)(g)(h) Description of monument found at this corner and if it was accepted, state all evidence (material, testimonial, occupational, plats, records, other monuments) used as a basis for accepting. If not accepted or if nothing was found, state evidence used as basis for establishing location. If re-established through lost corner proportionate methods, indicate all monuments, distances and directions used to establish. Indicate type of monument and sign post found or set.

This is a perpetuation of a previous USPLS Monument Record by Jean F. Resvick, RLS dated June 5, 1987 and filed in the office of the Oneida County Register of Deeds. A complete history of the corner can be found on the previous monument record. I accept the previous location as a true and faithful perpetuation or reestablishment of the original corner location and further perpetuate it as follows.

October 2, 2018: I found and accepted the record monument, a 2-1/2" diam. aluminum pipe with a 3-1/4" diam. Oneida Co. aluminum cap 3" beneath and 4 ft. East of the pavement centerline. I found or established accessories as shown below. The record bearing trees were found but not remeasured.

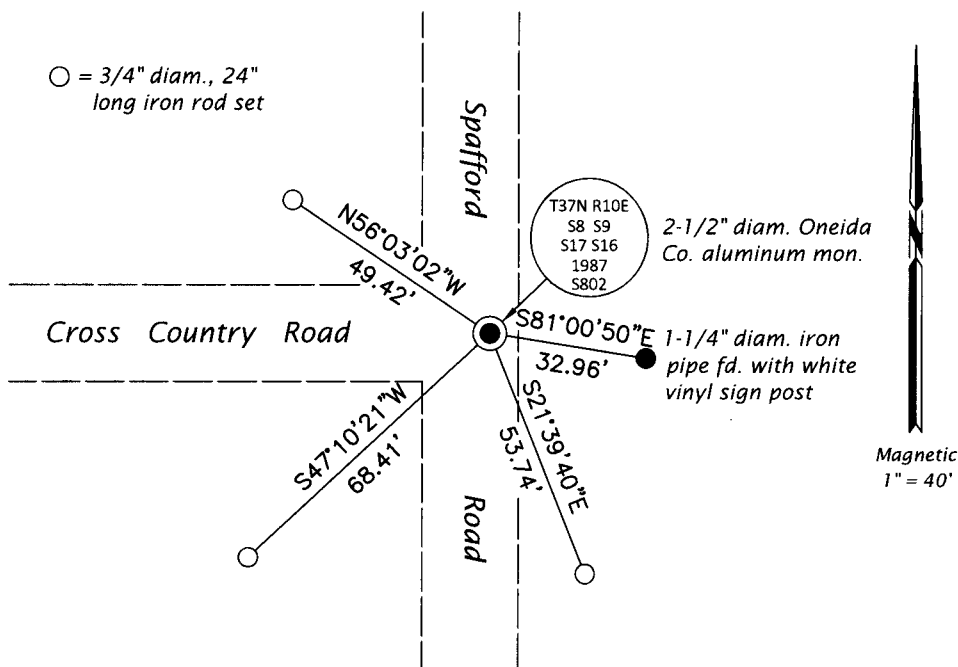
The coordinate value shown has been verified by at least one of the following methods: 1) comparison to a previously GPS determined published value; 2) the value is the average of two or more GPS observations at a markedly different time; 3) one or more distances were measured back to the GPS observed corner from temporary GPS observed offset locations.

REGISTER OF DEEDS OFFICE
 ONEIDA COUNTY
 FILED

DEC 17 2018

KYLE J. FRANSON
 REGISTER OF DEEDS

(c)(d)(e) Plan view of corner with ties to at least 4 witness monuments. If in disagreement with previously established corner, show the distances between the two corners and also indicate the ties to the disputed.



Magnetic
1" = 40'

(i) I, Jeffrey W. Austin, Professional Land Surveyor No. S-1885, hereby certify that the corner location on this record was determined by me or under my direction and control and that this U.S. Public Land Survey Monument Record is correct and complete to the best of my knowledge and belief.

[Handwritten Signature]
 Signature

3 DEC 2018
 Date