

U.S. PUBLIC LAND SURVEY MONUMENT RECORD

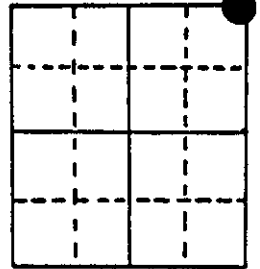
Note: This form is intended and designed to fulfill all requirements of Wisconsin Administrative Code, Chapter A-E 5.02, U.S. Public Land Survey Monument Record (3) (a) (b) (c) (d) (e) (f) (g) (h) (i). An additional sheet may be added if necessary to conform with said requirements.

(a) Corner location: Township 37 North

Range 10 East/West

Town/City/Village OF STELLA

County OF ONEIDA

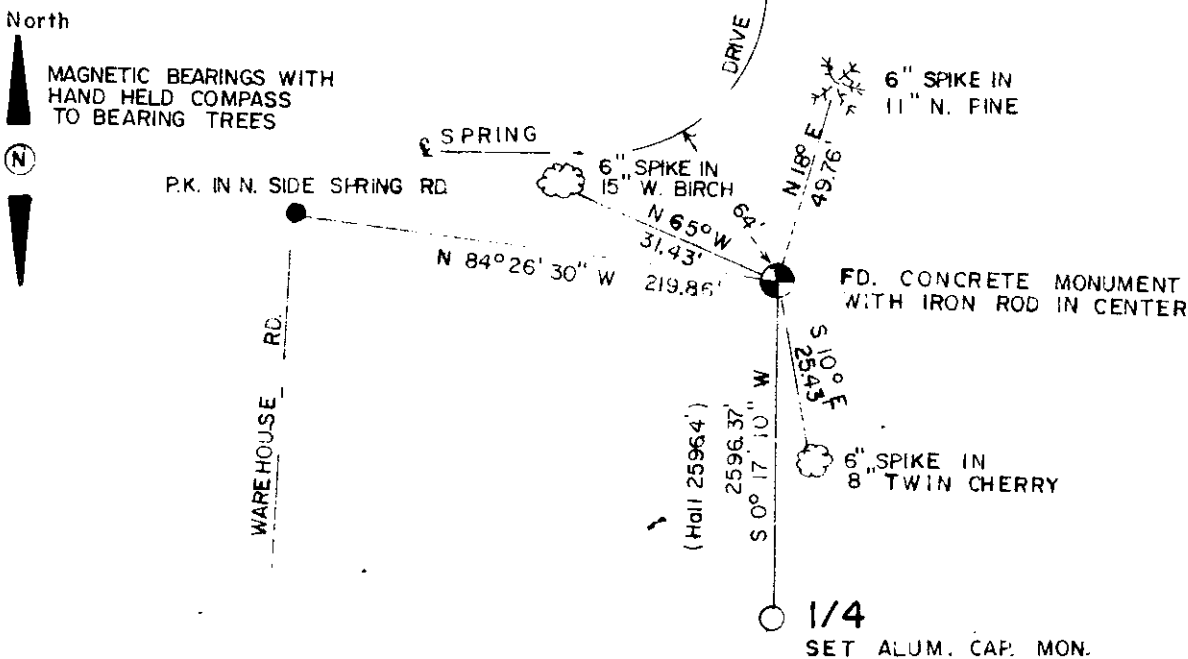


Section 23

(b) (f) (g) (h) Description of monument found at this corner and if it was accepted, state all evidence (material, testimonial, occupational, plats, records, other monuments) used as a basis for accepting. If not accepted or if nothing was found, state evidence used as basis for establishing location. If reestablished through lost corner proportionate methods, indicate all monuments, distances and directions used to establish.

- = 1863 W.E. Daughterty set orig. corner.
- 1929 Harry C. Hall recovered original Section Corner, calls for an 4x4 scribed pipe post, iron pipe, pile of rocks; burned W. pine stub 40" N 69° W 28.4'; burned W. Pine stump N62° W 107.2'; W. Birch N 46° W 33.7' center of N-S road bears west 218'
- At this corner I found a concrete monument with an iron rod in center. Although this concrete is not what Hall calls for it is similar to monuments he set in other surveys in the 1930's and the distances check to the 1/16 corner west and the 1/4 corner south. I did not find any of Halls witnesses. I accepted the concrete monument and referenced as shown below.

(c) (d) (e) Plan view of corner with ties to at least 4 witness monuments. If in disagreement with previously established corner, show the distances between the two corners and also indicate the ties to the disputed corner.

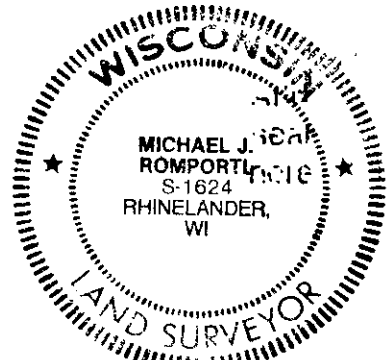


(i) I, MICHAEL J. ROMPORTL R.L.S. 1624

(type or print name) certify that the corner location on this record was determined by me or under my direction and control and that this U.S. Public Land Survey Monument Record is correct and complete to the best of my knowledge and belief.

Michael J. Romportl November 1, 1984
Signature Date

GENISOT & ASSOCIATES, INC
1512 N. EAGLE
RHINELANDER, WIS



Index No.

N-21

3710140000