

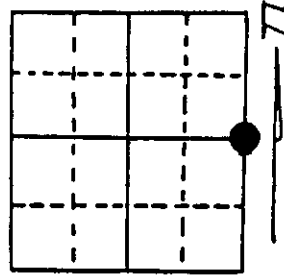
U.S. PUBLIC LAND SURVEY MONUMENT RECORD

Note: This form is intended and designed to fulfill all requirements of Wisconsin Administrative Code, Chapter A-E 7.08 U.S. Public Land Survey Monument Record (3) (a) (b) (c) (d) (e) (f) (g) (h) (i). An additional sheet may be added if necessary to conform with said requirements.

(a) Corner location: Township 37 North
 Range 10 East ^{XXXXX} West

Town/City/Village Stella

County Oneida

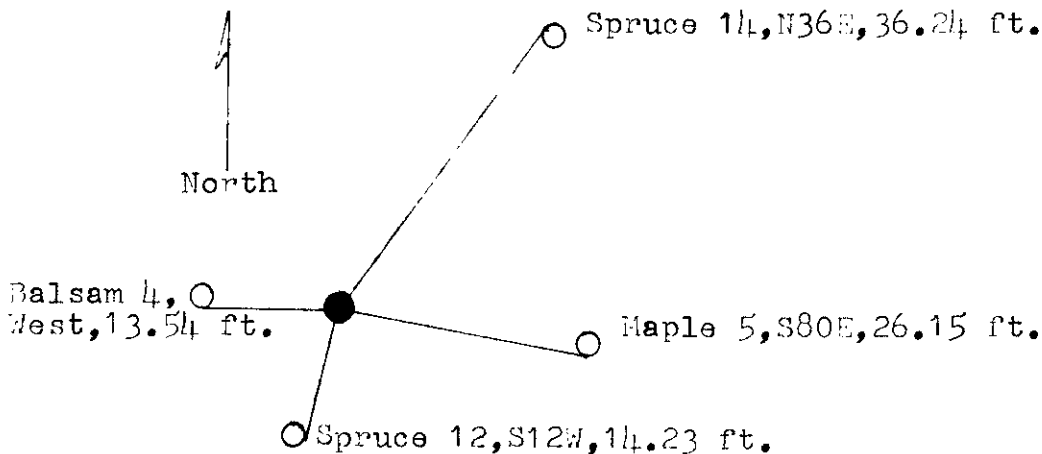


Section 16

(b) (f) (g) (h) Description of monument found at this corner and if it was accepted, state all evidence (material, testimonial, occupational, plats, records, other monuments) used as a basis for accepting. If not accepted or if nothing was found, state evidence used as basis for establishing location. If reestablished through lost corner proportionate methods, indicate all monuments, distances and directions used to establish. Indicate type of monument found or set and sign post.

Surveyed in 1863 by W. I. Daugherty. Set post, Y. Pine 14, S78E, 6 Lks. Aspen 12, N63W, 3 lks. F.R. Vincentsen located iron pipe and these B.T.'s. in 1953. Spruce 8, N26E, 55 lks., Tam 6, N29W, 74.3 lks. I found 1" diam. iron pipe, 18" long, Spruce 14, N36E, 36.24 ft., Tam. dead, N29W, 49.0 ft. I replaced iron pipe with a Oneida County Monument and placed iron pipe along side of. I set White Sign post on SE side of monument and blazed and scribed 3 new bearing trees as shown on sketch. I set 8 penny galvanized nails on the side of the B.T.'s.

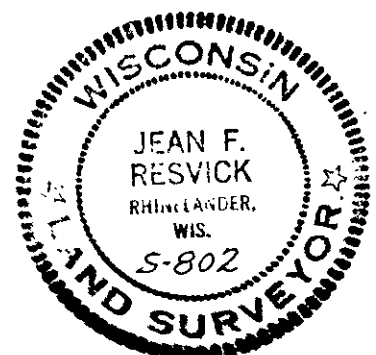
(c) (d) (e) Plan view of corner with ties to at least 4 witness monuments. If in disagreement with previously established corner, show the distances between the two corners and also indicate the ties to the disputed corner.



Hand Compass bearings to B.T.'s.

(i) I, Jean F. Resvick
 (type or print name) certify that the corner location on this record was determined by me or under my direction and control and that this U.S. Public Land Survey Monument Record is correct and complete to the best of my knowledge and belief.

Jean F. Resvick Signature 8/28/90 Date



Stamp

371016 2000

Index No. L-13