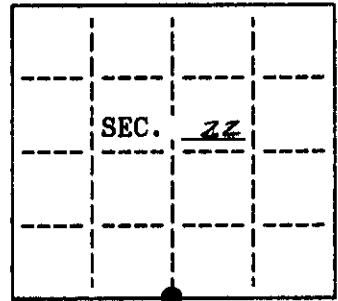


U.S. PUBLIC LAND SURVEY MONUMENT RECORD

Note: This form is intended and designed to fulfill all requirements of Wisconsin Administrative Code, Chapter A-E 7.08 U.S. Public Land Survey Monument Record (3)(a)(b)(c)(d)(e)(f)(g)(h)(i). An additional sheet may be added if necessary to conform with said requirements.

(a) CORNER LOCATION: State Plane Coordinates
5/4 corner of Sec. 22 X _____
 Township 37 North Y _____
 Range 10 East Datum Base _____
 Town/City STELLA County of ONEIDA



(b) HISTORY OF ORIGINAL CORNER ESTABLISHMENT
 Original Surveyor: W. DAUGHERTY
 Date of Survey: Commenced AUG, 1863
 Completed AUG, 1863

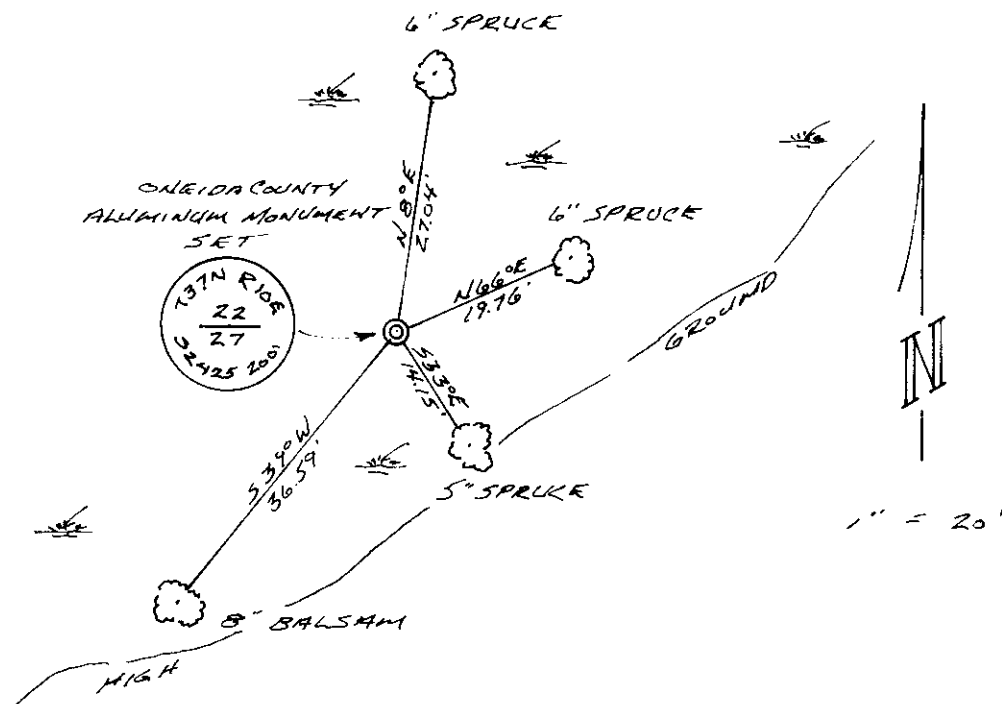
Original B.T.'S
 6" TAMARACK, N 29° W, 181Ks (11.88')
 10" TAMARACK, S 81° W, 161Ks (10.56')

(b)(f)(g)(h) Description of monument found at this corner and if it was accepted, state all evidence (material, testimonial, occupational, plats, records, other monuments) used as a basis for accepting. If not accepted or if nothing was found, state evidence used as basis for establishing location. If reestablished through lost corner proportionate methods, indicate all monuments, distances and directions used to establish. Indicate type of monument and sign post found or set.

AUG, 1863 - W. E. DAUGHERTY SET 1/4 POST.

OCT, 2001 - I FOUND NO FIELD EVIDENCE, ORIGINAL OR OTHERWISE, OR LOCAL TESTIMONY TO CORNER LOCATION. I ALSO FOUND NO RECORD ON THE CORNER OTHER THAN THE ORIGINAL. I SET THE CORNER BY SINGLE PROPORTION ALONG THE SOUTH SECTION LINE AND WITNESSED AS SHOWN BELOW.

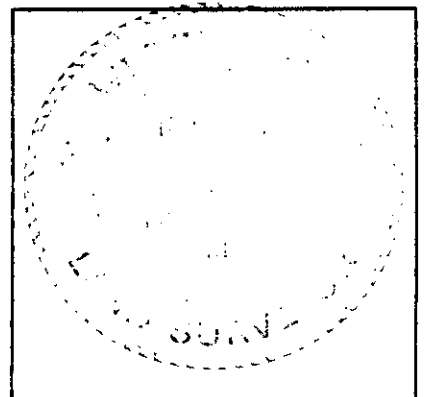
(c)(d)(e) Plan view of corner with ties to at least 4 witness monuments. If in disagreement with previously established corner, show the distances between the two corners and also indicate the ties to the disputed.



MEASURED TO 60d NAILS SET IN SIDES OF EACH B.T.
 SET CARSONITE POST ± 1' NW OF CORNER.
 SEE REVERSE

(i) I, KEITH A. ZARM ELS-2425
 hereby certify that the corner location on this record was determined by me or under my direction and control and that this U.S. Public Land Survey Monument Record is correct and complete to the best of my knowledge and belief.

Signature _____ Date 26 Nov 01



INDEX NO. R 15

371022 0020

SECTION 22

1/4 CORNER

2698.54'

2698.54'

N 85°38'17" W

ONIEDA COUNTY

5397.08'

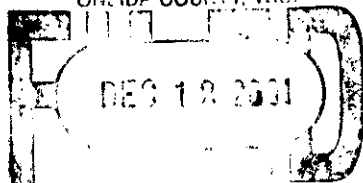
ALUMINUM MON. SET

SECTION CORNER
1" I.P.F. IN ROAD

SECTION CORNER
ONIEDA COUNTY
ALUMINUM MON.
SET THIS SURVEY
SEE U.S.D.L.S. RECORD

SECTION 27

REGISTER OF DEEDS OFFICE
ONIEDA COUNTY, WIS.



At _____
THOMAS H. LEIGHTON
REGISTER OF DEEDS