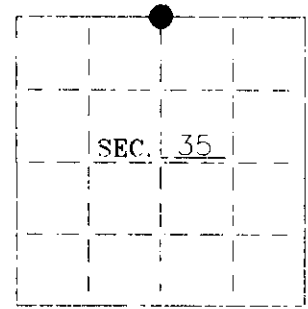


# U. S. PUBLIC LAND SURVEY MONUMENT RECORD

Note: This form is intended and designed to fulfill all requirements of Wisconsin Administrative Code—Chapter A-E 7.08 U. S. Public Land Survey Monument Record (3)(a)(b)(c)(d)(e)(f)(g)(h)(i). An additional sheet may be added if necessary to conform with said requirements.

(a) CORNER LOCATION. State Plane Coordinates  
N 1/4 corner of Sec. 35 X \_\_\_\_\_  
 Township 57 North Y \_\_\_\_\_  
 Range 10 East Datum Base \_\_\_\_\_  
 Town Stella County of Oneida

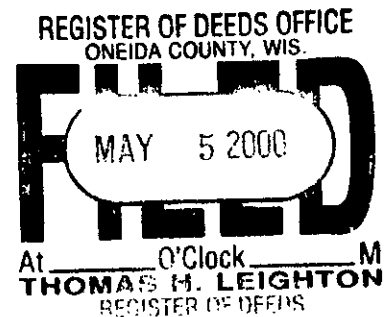


(b) HISTORY OF ORIGINAL CORNER ESTABLISHMENT:

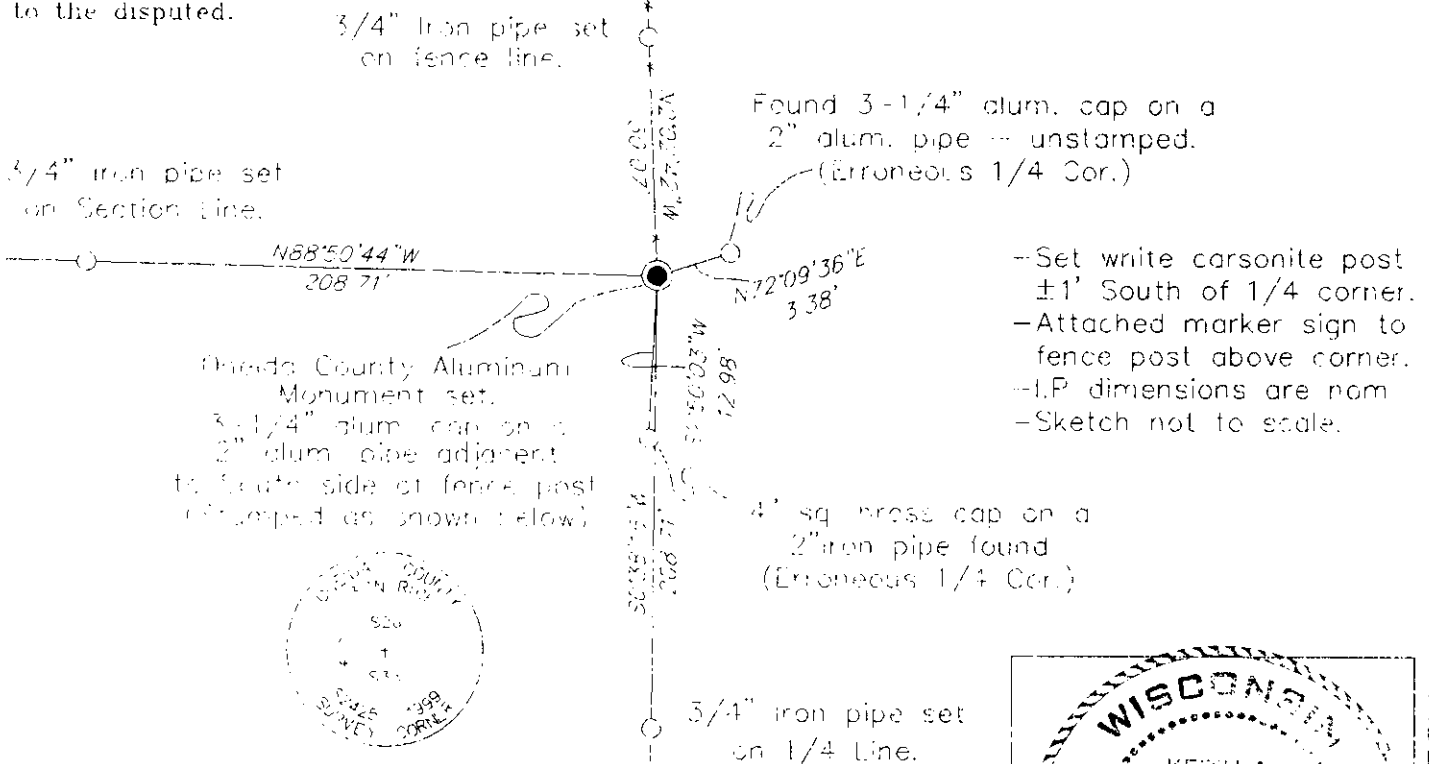
Original Surveyor: W.E. Dougherty Original B.T.'S  
 Date of Survey: Commenced August, 1863 White Pine 12 S31°E, 21 lks  
 Completed August, 1863 White Pine 10 N42°W, 27 lks

(b)(f)(g)(h) Description of monument found at this corner and if it was accepted—state all evidence (material—testimonial—occupation—plats—records—other monuments) used as a basis for accepting. If not accepted or if nothing was found state evidence used as basis for establishing location. If reestablished through lost corner proportionate methods indicate all monuments—distances and directions used to establish. Indicate type of monument and sign post found or set.

SEE REVERSE...



(c)(d)(e) Plan view of corner with ties to at least 4 witness monuments. If in disagreement with previously established corner—show the distances between the two corners and also indicate the ties to the disputed.



(i) I Keith A. Zarr 3-2425  
 hereby certify that the corner location on this record was determined by me or under my direction and control and that this U.S. Public Land Survey Monument Record is correct and complete to the best of my knowledge and belief

Signature [Signature] Date 19 APR 2000



INDEX NO. V 19 23

~~3710250020~~  
 3710260020

Note:

As the majority of the following history is related to Section 26, the N 1/4 Cor. of S.35 and related corners may be referred to as being the S 1/4 Cor. of S.26 and so on.

- 1863- W.E. Dougherty set 1/4 section post.
- 1929- H.C. Hall set an iron pipe and wood post in a pile of rocks. He noted the corner fell in an open field - "no bearings near".
- 1975- Philip T. Hansen (C.P.I.) erroneously set a brass-capped iron pipe (still exists) for the 1/4 corner based on an erroneous corner at the NW S.35.
- 1992- Todd J. Loftus erroneously set an unstamped, county style aluminum monument (still exists) for the 1/4 corner based on an erroneous corner at the NW corner S.35.
- 1996- Glen Barker (C.P.I.) accepted Loftus' corner for the N 1/4 corner for their subdivision of Section 35.
- 1999- I, Keith A. Zarm, in surveying the N1/2 of the NW1/4 of S.35 have reset the North 1/4 based on my belief that Hall incorrectly apportioned error into his measurement of the South line of S.26.

As part of Hall's 1929 survey, he was charged with subdividing Section 26. In closing his traverse he found 0.005 ch excess in the N'ing and 0.069 ch excess in the E'ing. He noted - "Conclude we gained about 0.05 on South Line 26 (between 50.00 & 70.00)"; the area of 50.00 & 70.00 ch.s being in the East 1/2 of the South line of S.26. He measured 81.769 ch (5396.75') along his original random and due to difficult terrain and traverse conditions he believed the error to be in the E'ly end of his traverse of the south line.

When Hall placed his error into this line, he set it up at 81.72 ch and set the 1/4 cor. on line at 40.86 ch (2696.76'). This point falls very close to the South end of an old barbed wire fence I believe to be on Hall's N-S 1/4 line.

I set the N 1/4 of S.35 on the south end of the fence line which I believe was built using Hall's corner. This position is 0.41' South of a line between adjoining section corners. Also, from the section corner West, I measured 2696.56' and to the section corner East I measured 2699.73', the difference being 3.17' or 0.048 chains.

I believe Hall's closure error was somewhere else in his traverse and he incorrectly placed it in the South line of S.26. Though not original, on-line, or half-way, I believe my location to be a perpetuation of Hall's corner position as evidenced by its relation to adjoining section corners and the occupation by adjoining land owners up to the fence line. I have restored it as shown on the reverse.

